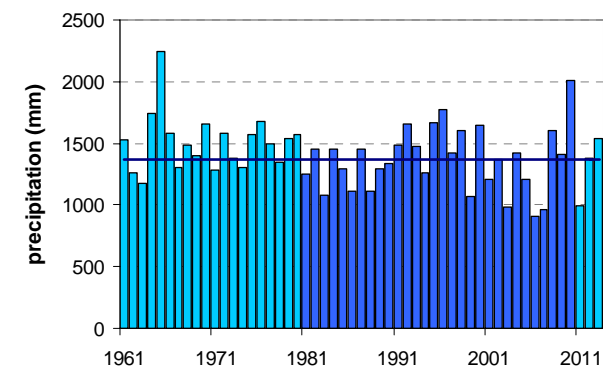
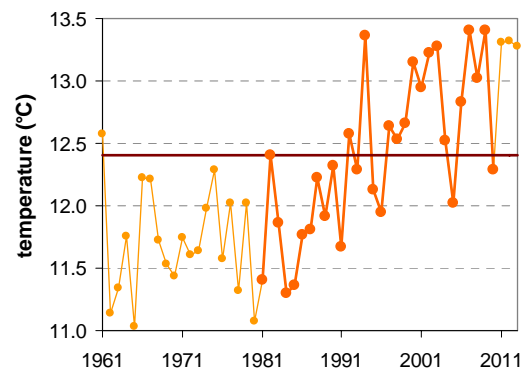


BILJE

Latitude: 45° 54'

Longitude: 13° 38'

Elevation a. s. l.: 55 m



	JAN	FEB	MAR	APR	MAY	JUN	JUL	AUG	SEP	OCT	NOV	DEC	YEAR
mean monthly temperature (°C)*	3.0	3.7	7.6	11.6	16.7	20.1	22.4	21.8	17.3	12.9	7.9	4.0	12.4
mean daily maximum for a month (°C)*	7.9	9.4	13.5	17.6	22.7	26.1	29.0	28.8	24.0	18.8	12.9	8.7	18.3
mean daily minimum for a month (°C)*	-0.9	-0.8	2.8	6.3	11.0	14.2	16.2	15.9	12.2	8.6	4.1	0.4	7.5
absolute monthly maximum (°C)	19.0	22.4	26.0	27.5	33.7	37.0	38.6	37.8	33.5	28.1	25.0	17.2	38.6
absolute monthly minimum (°C)	-15.6	-13.0	-11.5	-5.3	0.4	3.8	7.4	5.5	3.0	-4.8	-9.7	-13.9	-15.6
number of days with max. temperature < 0 °C	0	0	0	0	0	0	0	0	0	0	0	0	1
number of days with min. temperature < 0 °C	19	17	9	1	0	0	0	0	0	1	8	15	70
number of days with max. temperature > 25 °C	0	0	0	1	8	18	27	26	12	1	0	0	94
number of days with max. temperature > 30 °C	0	0	0	0	1	5	12	11	1	0	0	0	30
bright sunshine duration (in hours)*	114	137	167	180	232	246	302	281	203	156	108	101	2227
mean monthly relative humidity at 7 a.m. (%)	86	84	83	83	81	79	79	84	90	90	88	85	84
mean monthly relative humidity at 2 p.m. (%)	62	55	51	52	51	51	47	47	53	60	63	64	55
mean monthly relative humidity at 9 p.m. (%)	82	78	74	77	79	79	78	81	85	86	85	83	80
mean cloud amount at 7 a.m. (in tenths)	5.7	5.3	5.9	6.0	5.3	4.9	4.0	4.0	5.1	5.8	6.3	5.9	5.3
mean cloud amount at 2 p.m. (in tenths)	5.8	5.4	5.7	6.1	5.5	5.4	4.3	4.4	4.9	5.6	6.2	6.0	5.4
mean cloud amount at 9 p.m. (in tenths)	5.5	4.9	5.1	5.4	5.3	5.1	4.0	3.8	4.5	5.3	5.7	5.6	5.0
number of clear days (cloudiness < 2/10)	7	8	6	5	5	4	8	9	7	7	5	7	79
number of cloudy days (cloudiness > 8/10)	12	9	10	9	7	6	2	3	6	10	12	12	98
total amount of precipitation (mm)*	82	66	81	95	117	117	97	112	162	156	151	130	1365
number of days with precipitation 0.1 mm or more	11	8	9	12	12	12	10	10	11	12	12	10	130
number of days with precipitation 1 mm or more	7	5	7	9	9	10	8	8	9	9	9	8	98
number of days with precipitation 10 mm or more	3	2	2	3	4	4	3	4	4	5	4	4	43
number of days with snow cover at 7 a.m.	1	1	0	0	0	0	0	0	0	0	0	0	2
mean snow cover depth at 7 a.m. (cm)*	0	0	0	0	0	0	0	0	0	0	0	0	0.0
maximum snow cover depth at 7 a.m. (cm)	17	11	3	0	0	0	0	0	0	0	1	17	17
mean new snow cover depth (cm)*	2	2	0	0	0	0	0	0	0	0	0	1	5

* homogenised values

Time period: 1981–2010