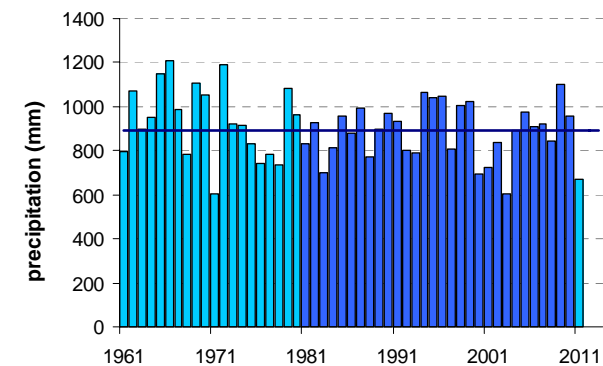
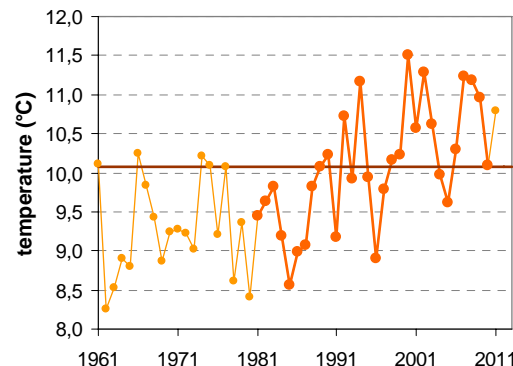
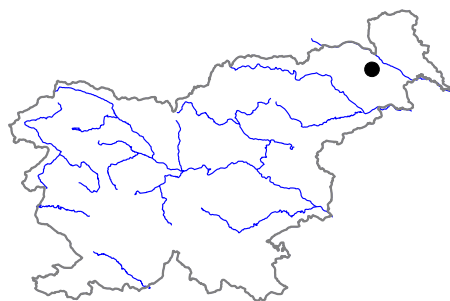


BISERJANE

Latitude: 46° 34'

Longitude: 16° 1'

Elevation a. s. l.: 203 m



	JAN	FEB	MAR	APR	MAY	JUN	JUL	AUG	SEP	OCT	NOV	DEC	YEAR
mean monthly temperature (°C)*	-0.9	1.0	5.7	10.5	15.6	18.7	20.4	19.6	15.1	10.1	4.7	0.4	10.1
mean daily maximum for a month (°C)*	3.8	6.6	11.5	16.4	21.6	24.5	26.8	26.3	21.6	16.1	9.3	4.3	15.7
mean daily minimum for a month (°C)*	—	—	—	—	—	—	—	—	—	—	—	—	—
absolute monthly maximum (°C)	—	—	—	—	—	—	—	—	—	—	—	—	—
absolute monthly minimum (°C)	—	—	—	—	—	—	—	—	—	—	—	—	—
number of days with max. temperature < 0 °C	—	—	—	—	—	—	—	—	—	—	—	—	—
number of days with min. temperature < 0 °C	—	—	—	—	—	—	—	—	—	—	—	—	—
number of days with max. temperature > 25 °C	—	—	—	—	—	—	—	—	—	—	—	—	—
number of days with max. temperature > 30 °C	—	—	—	—	—	—	—	—	—	—	—	—	—
bright sunshine duration (in hours)*	—	—	—	—	—	—	—	—	—	—	—	—	—
mean monthly relative humidity at 7 a.m. (%)	—	—	—	—	—	—	—	—	—	—	—	—	—
mean monthly relative humidity at 2 p.m. (%)	—	—	—	—	—	—	—	—	—	—	—	—	—
mean monthly relative humidity at 9 p.m. (%)	—	—	—	—	—	—	—	—	—	—	—	—	—
mean cloud amount at 7 a.m. (in tenths)	—	—	—	—	—	—	—	—	—	—	—	—	—
mean cloud amount at 2 p.m. (in tenths)	—	—	—	—	—	—	—	—	—	—	—	—	—
mean cloud amount at 9 p.m. (in tenths)	—	—	—	—	—	—	—	—	—	—	—	—	—
number of clear days (cloudiness < 2/10)	—	—	—	—	—	—	—	—	—	—	—	—	—
number of cloudy days (cloudiness > 8/10)	—	—	—	—	—	—	—	—	—	—	—	—	—
total amount of precipitation (mm)*	36	39	57	60	83	113	90	108	98	74	68	63	891
number of days with precipitation 0.1 mm or more	—	—	—	—	—	—	—	—	—	—	—	—	—
number of days with precipitation 1 mm or more	—	—	—	—	—	—	—	—	—	—	—	—	—
number of days with precipitation 10 mm or more	—	—	—	—	—	—	—	—	—	—	—	—	—
number of days with snow cover at 7 a.m.	—	—	—	—	—	—	—	—	—	—	—	—	—
mean snow cover depth at 7 a.m. (cm)*	5	5	1	0	0	0	0	0	0	0	1	4	1.3
maximum snow cover depth at 7 a.m. (cm)	—	—	—	—	—	—	—	—	—	—	—	—	—
mean new snow cover depth (cm)*	—	—	—	—	—	—	—	—	—	—	—	—	—

* homogenised values