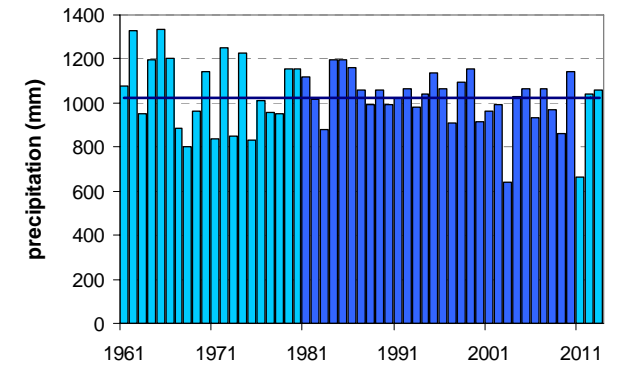
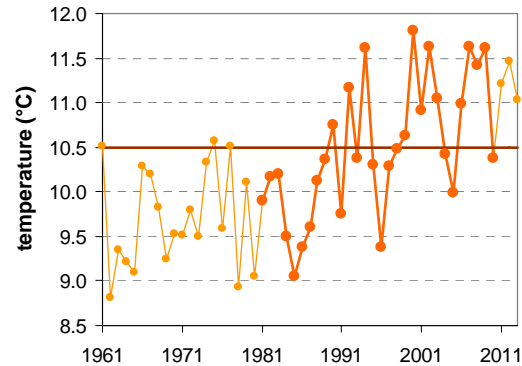
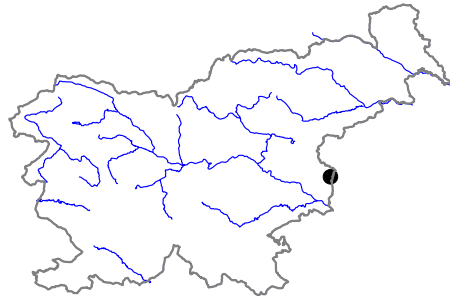


BIZELJSKO

Latitude: 46° 1'

Longitude: 15° 41'

Elevation a. s. l.: 174 m



	JAN	FEB	MAR	APR	MAY	JUN	JUL	AUG	SEP	OCT	NOV	DEC	YEAR
mean monthly temperature (°C)*	-0.4	1.5	6.2	10.9	15.8	18.8	20.7	20.2	15.8	10.8	5.1	0.6	10.5
mean daily maximum for a month (°C)*	3.3	6.5	12.1	17.3	22.8	25.8	28.1	27.6	22.5	16.4	9.1	3.8	16.3
mean daily minimum for a month (°C)*	-3.6	-2.9	1.0	5.2	9.9	13.1	14.9	14.5	10.8	6.5	1.7	-2.2	5.7
absolute monthly maximum (°C)	17.6	21.8	26.2	29.8	33.6	36.0	38.0	39.4	31.6	27.0	22.2	20.6	39.4
absolute monthly minimum (°C)	-26.5	-23.0	-15.2	-5.4	0.2	4.2	6.6	4.6	1.6	-4.8	-16.2	-18.6	-26.5
number of days with max. temperature < 0 °C	7	3	0	0	0	0	0	0	0	0	1	6	18
number of days with min. temperature < 0 °C	24	21	11	2	0	0	0	0	0	2	11	21	92
number of days with max. temperature > 25 °C	0	0	0	1	9	16	23	22	8	1	0	0	81
number of days with max. temperature > 30 °C	0	0	0	0	1	5	10	8	0	0	0	0	24
bright sunshine duration (in hours)*	—	—	—	—	—	—	—	—	—	—	—	—	—
mean monthly relative humidity at 7 a.m. (%)	89	89	87	87	87	88	89	91	92	93	92	91	90
mean monthly relative humidity at 2 p.m. (%)	73	60	53	50	50	53	51	52	57	64	72	79	59
mean monthly relative humidity at 9 p.m. (%)	86	80	74	72	75	78	77	80	85	88	88	89	81
mean cloud amount at 7 a.m. (in tenths)	7.5	6.5	6.3	6.0	5.4	5.4	4.5	5.2	7.4	8.1	8.0	8.2	6.5
mean cloud amount at 2 p.m. (in tenths)	6.6	5.6	6.0	6.1	5.7	5.5	4.5	4.4	5.3	5.7	7.0	7.2	5.8
mean cloud amount at 9 p.m. (in tenths)	6.2	5.1	4.9	5.0	4.4	4.8	3.8	3.3	4.1	4.7	6.4	6.7	4.9
number of clear days (cloudiness < 2/10)	3	5	5	4	6	6	9	9	3	2	2	2	57
number of cloudy days (cloudiness > 8/10)	15	9	9	8	6	6	4	4	8	10	15	17	113
total amount of precipitation (mm)*	53	53	73	73	89	121	89	96	110	101	88	78	1024
number of days with precipitation 0.1 mm or more	8	8	10	12	12	13	10	10	10	10	11	12	125
number of days with precipitation 1 mm or more	7	7	8	10	10	11	8	8	9	8	9	9	105
number of days with precipitation 10 mm or more	2	2	2	2	3	4	3	3	4	3	3	2	35
number of days with snow cover at 7 a.m.	13	10	3	0	0	0	0	0	0	0	3	10	40
mean snow cover depth at 7 a.m. (cm)*	5	5	1	0	0	0	0	0	0	0	1	3	1.2
maximum snow cover depth at 7 a.m. (cm)	45	59	45	7	2	0	0	0	0	0	35	56	59
mean new snow cover depth (cm)*	16	17	5	1	0	0	0	0	0	0	7	16	61

* homogenised values

Time period: 1981–2010