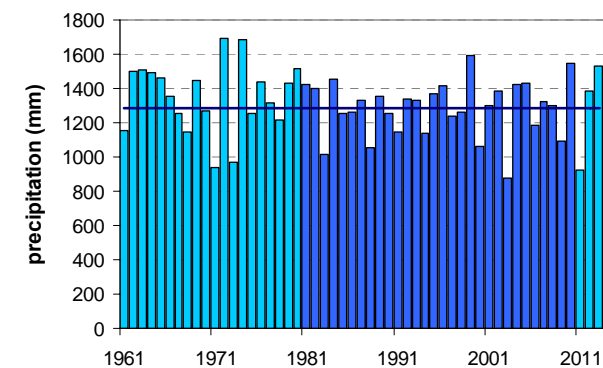
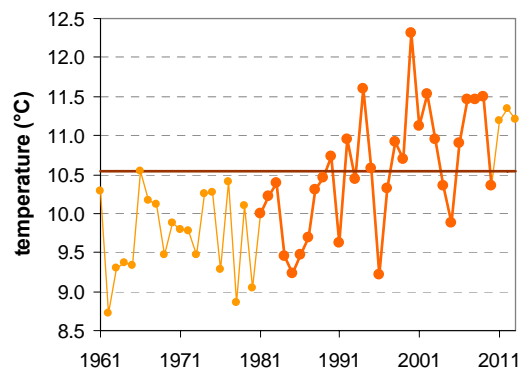
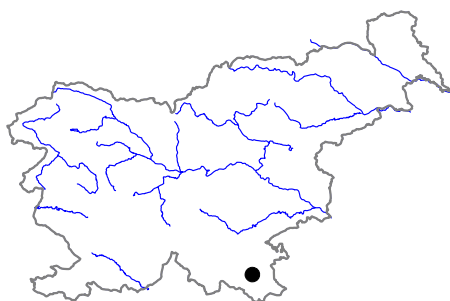


DOBLIČE

Latitude: 45° 34'

Longitude: 15° 9'

Elevation a. s. l.: 157 m



	JAN	FEB	MAR	APR	MAY	JUN	JUL	AUG	SEP	OCT	NOV	DEC	YEAR
mean monthly temperature (°C)*	-0.2	1.4	5.8	10.6	15.7	19.1	21.2	20.4	15.6	10.8	5.1	0.8	10.5
mean daily maximum for a month (°C)*	4.3	7.3	12.2	16.9	22.0	25.2	27.7	27.3	22.4	16.8	9.9	4.8	16.4
mean daily minimum for a month (°C)*	-3.9	-3.5	0.2	4.4	9.1	12.4	14.0	13.7	10.0	6.2	1.4	-2.4	5.1
absolute monthly maximum (°C)	18.0	22.8	26.2	29.0	33.4	35.2	37.8	38.8	32.6	28.7	23.4	21.0	38.8
absolute monthly minimum (°C)	-24.2	-24.0	-20.5	-5.5	-1.5	3.8	5.3	3.5	-0.5	-7.0	-18.0	-22.0	-24.2
number of days with max. temperature < 0 °C	7	3	0	0	0	0	0	0	0	0	1	5	17
number of days with min. temperature < 0 °C	24	21	14	4	0	0	0	0	0	3	11	21	98
number of days with max. temperature > 25 °C	0	0	0	1	8	16	23	22	7	1	0	0	78
number of days with max. temperature > 30 °C	0	0	0	0	1	4	8	7	0	0	0	0	21
bright sunshine duration (in hours)*	—	—	—	—	—	—	—	—	—	—	—	—	—
mean monthly relative humidity at 7 a.m. (%)	91	92	90	90	87	85	87	91	94	95	93	92	91
mean monthly relative humidity at 2 p.m. (%)	73	60	52	50	50	52	49	51	57	64	72	79	59
mean monthly relative humidity at 9 p.m. (%)	88	85	76	74	74	77	77	81	87	90	90	91	83
mean cloud amount at 7 a.m. (in tenths)	7.5	6.5	6.3	6.1	5.1	4.8	3.7	4.3	6.1	7.7	8.0	7.8	6.2
mean cloud amount at 2 p.m. (in tenths)	6.8	5.9	6.0	6.4	5.8	5.6	4.7	4.8	5.3	6.2	7.2	7.4	6.0
mean cloud amount at 9 p.m. (in tenths)	6.7	5.6	5.6	5.8	5.0	4.9	4.0	4.1	4.7	5.4	6.6	7.1	5.5
number of clear days (cloudiness < 2/10)	4	6	6	5	6	6	9	9	6	3	3	3	68
number of cloudy days (cloudiness > 8/10)	17	11	12	11	8	7	5	6	8	12	16	18	130
total amount of precipitation (mm)*	74	76	87	102	100	123	93	121	133	139	123	112	1285
number of days with precipitation 0.1 mm or more	13	11	12	14	14	14	11	11	13	14	15	15	157
number of days with precipitation 1 mm or more	8	8	9	11	10	11	8	8	10	10	10	11	113
number of days with precipitation 10 mm or more	3	3	3	4	3	4	3	4	4	4	4	4	42
number of days with snow cover at 7 a.m.	14	11	4	1	0	0	0	0	0	0	3	11	44
mean snow cover depth at 7 a.m. (cm)*	7	8	2	0	0	0	0	0	0	0	2	4	1.9
maximum snow cover depth at 7 a.m. (cm)	63	63	48	18	4	0	0	0	0	0	60	57	63
mean new snow cover depth (cm)*	27	34	12	2	0	0	0	0	0	0	14	25	115

* homogenised values

Time period: 1981–2010