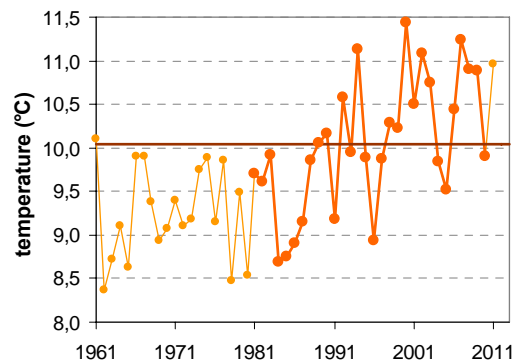


# KLENIK (PRI VAČAH)

Latitude: 46° 7'

Longitude: 14° 50'

Elevation: 495 m a. s. l.



	JAN	FEB	MAR	APR	MAY	JUN	JUL	AUG	SEP	OCT	NOV	DEC	YEAR
mean monthly temperature (°C)*	0.1	1.6	5.6	9.9	14.7	17.7	19.9	19.4	15.1	10.7	5.1	0.8	10.0
mean daily maximum for a month (°C)*	3.4	6.1	10.4	14.8	20.0	23.0	25.5	25.3	20.5	15.2	8.4	3.6	14.7
mean daily minimum for a month (°C)*	—	—	—	—	—	—	—	—	—	—	—	—	—
absolute monthly maximum (°C)	—	—	—	—	—	—	—	—	—	—	—	—	—
absolute monthly minimum (°C)	—	—	—	—	—	—	—	—	—	—	—	—	—
number of days with max. temperature < 0 °C	—	—	—	—	—	—	—	—	—	—	—	—	—
number of days with min. temperature < 0 °C	—	—	—	—	—	—	—	—	—	—	—	—	—
number of days with max. temperature > 25 °C	—	—	—	—	—	—	—	—	—	—	—	—	—
number of days with max. temperature > 30 °C	—	—	—	—	—	—	—	—	—	—	—	—	—
bright sunshine duration (in hours)*	—	—	—	—	—	—	—	—	—	—	—	—	—
mean monthly relative humidity at 7 a.m. (%)	—	—	—	—	—	—	—	—	—	—	—	—	—
mean monthly relative humidity at 2 p.m. (%)	—	—	—	—	—	—	—	—	—	—	—	—	—
mean monthly relative humidity at 9 p.m. (%)	—	—	—	—	—	—	—	—	—	—	—	—	—
mean cloud amount at 7 a.m. (in tenths)	—	—	—	—	—	—	—	—	—	—	—	—	—
mean cloud amount at 2 p.m. (in tenths)	—	—	—	—	—	—	—	—	—	—	—	—	—
mean cloud amount at 9 p.m. (in tenths)	—	—	—	—	—	—	—	—	—	—	—	—	—
number of clear days (cloudiness < 2/10)	—	—	—	—	—	—	—	—	—	—	—	—	—
number of cloudy days (cloudiness > 8/10)	—	—	—	—	—	—	—	—	—	—	—	—	—
total amount of precipitation (mm)*	—	—	—	—	—	—	—	—	—	—	—	—	—
number of days with precipitation 0.1 mm or more	—	—	—	—	—	—	—	—	—	—	—	—	—
number of days with precipitation 1 mm or more	—	—	—	—	—	—	—	—	—	—	—	—	—
number of days with precipitation 10 mm or more	—	—	—	—	—	—	—	—	—	—	—	—	—
number of days with snow cover at 7 a.m.	—	—	—	—	—	—	—	—	—	—	—	—	—
mean snow cover depth at 7 a.m. (cm)*	25	28	18	4	1	0	0	0	0	1	16	25	118
maximum snow cover depth at 7 a.m. (cm)	—	—	—	—	—	—	—	—	—	—	—	—	—
mean new snow cover depth (cm)*	—	—	—	—	—	—	—	—	—	—	—	—	—

\* homogenised values

Time period: 1981–2010