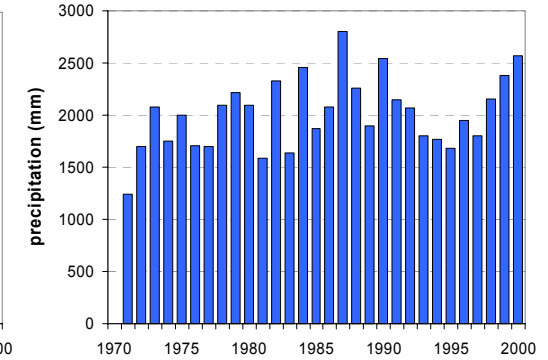
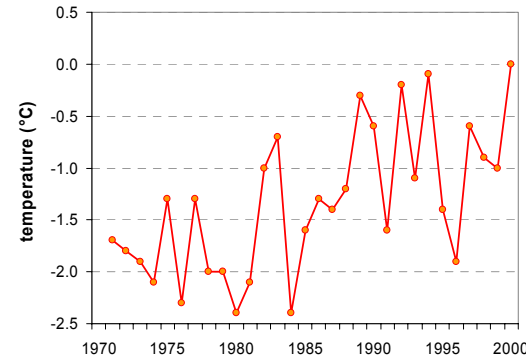
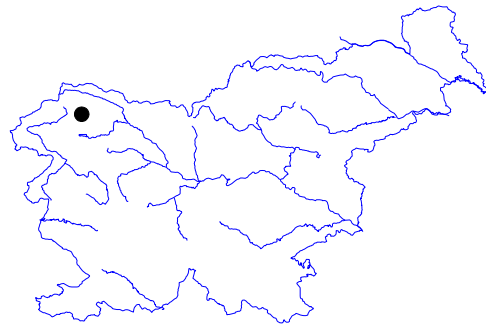


# KREDARICA

Latitude: 46° 23'

Longitude: 13° 51'

Elevation a. s. l.: 2514 m



|  | JAN   | FEB   | MAR   | APR   | MAY   | JUN  | JUL  | AUG  | SEP  | OCT   | NOV   | DEC   | YEAR  |
|--|-------|-------|-------|-------|-------|------|------|------|------|-------|-------|-------|-------|
| mean monthly temperature (°C)                    | -7.2  | -8.0  | -6.6  | -4.5  | 0.3   | 3.4  | 6.1  | 6.4  | 3.6  | 0.5   | -4.1  | -6.0  | -1.3  |
| mean daily maximum for a month (°C)              | -4.4  | -5.0  | -3.8  | -1.9  | 2.7   | 6.0  | 9.1  | 9.3  | 6.4  | 3.1   | -1.3  | -3.2  | 1.4   |
| mean daily minimum for a month (°C)              | -9.9  | -10.6 | -9.1  | -6.8  | -1.9  | 1.2  | 3.7  | 4.1  | 1.2  | -2.0  | -6.6  | -8.8  | -3.8  |
| absolute monthly maximum (°C)                    | 9.6   | 9.4   | 8.1   | 8.8   | 13.4  | 15.7 | 21.6 | 18.1 | 18.4 | 15.0  | 11.8  | 10.4  | 21.6  |
| absolute monthly minimum (°C)                    | -28.3 | -25.3 | -28.1 | -17.2 | -13.7 | -8.0 | -5.4 | -6.0 | -9.8 | -17.8 | -21.2 | -26.3 | -28.3 |
| number of days with max. temperature ≤ 0 °C      | 25.1  | 23.1  | 24.0  | 20.6  | 7.3   | 1.8  | 0.1  | 0.3  | 2.6  | 7.2   | 17.3  | 21.9  | 151.4 |
| number of days with min. temperature ≤ 0 °C      | 30.5  | 27.8  | 30.6  | 28.9  | 21.3  | 11.0 | 4.6  | 3.7  | 10.7 | 19.5  | 27.2  | 29.9  | 245.7 |
| number of days with max. temperature ≥ 25 °C     | 0.0   | 0.0   | 0.0   | 0.0   | 0.0   | 0.0  | 0.0  | 0.0  | 0.0  | 0.0   | 0.0   | 0.0   | 0.0   |
| number of days with max. temperature ≥ 30 °C     | 0.0   | 0.0   | 0.0   | 0.0   | 0.0   | 0.0  | 0.0  | 0.0  | 0.0  | 0.0   | 0.0   | 0.0   | 0.0   |
| bright sunshine duration (in hours)              | 119   | 127   | 138   | 130   | 161   | 161  | 190  | 176  | 152  | 140   | 109   | 111   | 1712  |
| mean monthly vapour pressure (hPa)               | 2.4   | 2.4   | 2.9   | 3.7   | 5.2   | 6.5  | 7.6  | 7.7  | 6.1  | 4.6   | 3.3   | 2.7   | 4.6   |
| mean monthly relative humidity at 7 a.m. (%)     | 68    | 69    | 75    | 81    | 80    | 80   | 77   | 76   | 74   | 71    | 72    | 68    | 74    |
| mean monthly relative humidity at 2 p.m. (%)     | 67    | 68    | 76    | 82    | 85    | 84   | 81   | 81   | 79   | 73    | 72    | 68    | 76    |
| mean monthly relative humidity at 9 p.m. (%)     | 68    | 71    | 78    | 85    | 86    | 85   | 82   | 81   | 78   | 74    | 72    | 69    | 77    |
| mean cloud amount at 7 a.m. (in tenths)          | 5.0   | 5.2   | 6.3   | 6.8   | 6.3   | 6.2  | 5.3  | 5.1  | 5.3  | 5.4   | 5.8   | 5.4   | 5.7   |
| mean cloud amount at 2 p.m. (in tenths)          | 5.7   | 5.7   | 6.8   | 7.6   | 7.9   | 8.1  | 7.6  | 7.2  | 6.7  | 6.0   | 6.2   | 5.9   | 6.8   |
| mean cloud amount at 9 p.m. (in tenths)          | 4.4   | 4.8   | 5.8   | 6.7   | 6.9   | 6.7  | 6.3  | 5.3  | 5.2  | 5.2   | 5.3   | 4.7   | 5.6   |
| number of clear days (cloudiness < 2/10)         | 7.5   | 6.5   | 3.9   | 2.2   | 1.6   | 1.0  | 1.7  | 3.3  | 4.9  | 6.8   | 5.7   | 6.9   | 52.0  |
| number of cloudy days (cloudiness > 8/10)        | 7.2   | 7.6   | 10.9  | 13.2  | 13.4  | 12.0 | 8.7  | 7.8  | 8.8  | 9.8   | 10.2  | 8.6   | 118.2 |
| total amount of precipitation (mm)               | 101   | 91    | 124   | 154   | 172   | 220  | 214  | 195  | 197  | 232   | 188   | 126   | 2012  |
| number of days with precipitation 0.1 mm or more | 12.5  | 11.4  | 15.0  | 18.1  | 18.6  | 18.9 | 16.7 | 14.7 | 12.5 | 12.9  | 13.1  | 12.4  | 176.7 |
| number of days with precipitation 1 mm or more   | 9.8   | 8.8   | 11.8  | 14.5  | 15.5  | 16.1 | 14.4 | 12.7 | 10.5 | 11.2  | 11.0  | 10.2  | 146.6 |
| number of days with precipitation 10 mm or more  | 3.1   | 2.6   | 4.2   | 5.2   | 5.2   | 6.8  | 6.9  | 5.6  | 5.5  | 6.0   | 5.1   | 4.3   | 60.7  |
| number of days with snow cover at 7 a.m.         | 31.0  | 28.1  | 31.0  | 30.0  | 31.0  | 25.3 | 5.5  | 1.5  | 7.9  | 19.1  | 26.3  | 31.0  | 267.6 |
| maximum snow cover depth (cm)                    | 434   | 521   | 588   | 690   | 630   | 422  | 238  | 9    | 95   | 197   | 254   | 325   | 690   |
| number of days with thunderstorm and thunder     | 0.3   | 0.5   | 1.2   | 1.8   | 5.9   | 8.5  | 8.6  | 7.2  | 3.9  | 2.3   | 1.7   | 0.7   | 42.6  |
| number of days with fog                          | 13.9  | 13.7  | 17.9  | 21.1  | 21.7  | 20.7 | 19.0 | 17.4 | 17.4 | 17.2  | 15.9  | 14.3  | 210.0 |

Time period: 1971–2000