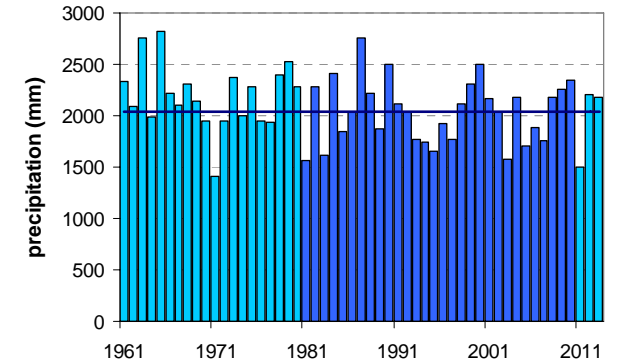
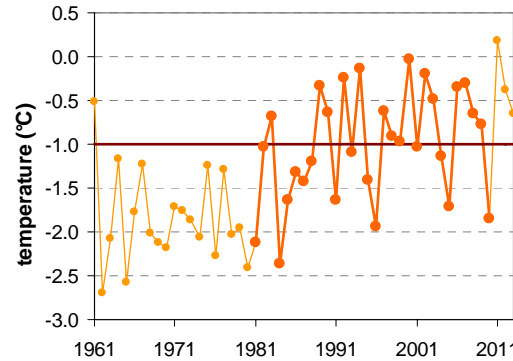
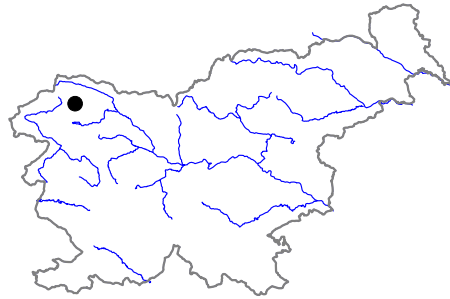


KREDARICA

Latitude: 46° 23'

Longitude: 13° 51'

Elevation a. s. l.: 2514 m



	JAN	FEB	MAR	APR	MAY	JUN	JUL	AUG	SEP	OCT	NOV	DEC	YEAR
mean monthly temperature (°C)*	-7.1	-8.1	-6.3	-3.8	0.9	4.3	6.9	6.8	3.6	1.0	-3.7	-6.5	-1.0
mean daily maximum for a month (°C)*	-4.3	-5.2	-3.7	-1.4	3.1	6.7	9.7	9.5	6.2	3.6	-1.1	-3.8	1.6
mean daily minimum for a month (°C)*	-9.8	-10.7	-8.8	-6.1	-1.2	2.0	4.4	4.6	1.3	-1.4	-6.1	-9.2	-3.4
absolute monthly maximum (°C)	9.6	7.9	8.1	8.8	14.4	16.9	21.6	18.6	17.0	14.8	10.6	10.4	21.6
absolute monthly minimum (°C)	-28.3	-25.7	-25.8	-20.2	-11.2	-8.6	-4.0	-5.7	-8.9	-17.8	-21.0	-26.3	-28.3
number of days with max. temperature < 0 °C	24	22	23	19	6	2	0	0	2	6	16	23	144
number of days with min. temperature < 0 °C	30	28	31	28	19	9	3	3	10	18	27	30	237
number of days with max. temperature > 25 °C	0	0	0	0	0	0	0	0	0	0	0	0	0
number of days with max. temperature > 30 °C	0	0	0	0	0	0	0	0	0	0	0	0	0
bright sunshine duration (in hours)*	139	154	160	140	166	169	203	180	160	161	120	120	1872
mean monthly relative humidity at 7 a.m. (%)	65	68	74	81	79	78	76	76	75	71	73	70	74
mean monthly relative humidity at 2 p.m. (%)	65	67	75	83	84	83	80	82	80	73	72	70	76
mean monthly relative humidity at 9 p.m. (%)	65	69	77	85	85	83	81	81	80	73	73	71	77
mean cloud amount at 7 a.m. (in tenths)	4.8	5.1	6.1	6.8	6.3	6.2	5.2	5.2	5.5	5.6	6.0	5.6	5.7
mean cloud amount at 2 p.m. (in tenths)	5.6	5.7	6.9	7.6	8.0	8.0	7.3	7.3	7.0	6.2	6.4	6.1	6.8
mean cloud amount at 9 p.m. (in tenths)	4.4	4.8	5.9	6.7	7.0	6.7	6.1	5.5	5.5	5.4	5.4	5.1	5.7
number of clear days (cloudiness < 2/10)	8	6	4	2	1	1	2	3	4	6	5	6	47
number of cloudy days (cloudiness > 8/10)	6	7	10	13	13	11	8	8	9	10	10	10	117
total amount of precipitation (mm)*	93	84	125	151	172	204	213	214	225	238	184	137	2038
number of days with precipitation 0.1 mm or more	12	11	15	18	18	18	16	15	13	13	13	13	175
number of days with precipitation 1 mm or more	9	8	12	15	15	16	13	13	11	11	11	11	147
number of days with precipitation 10 mm or more	3	3	4	5	5	7	7	6	6	6	6	5	63
number of days with snow cover at 7 a.m.	31	28	31	30	31	23	4	1	7	17	26	31	260
mean snow cover depth at 7 a.m. (cm)*	182	219	266	319	256	100	6	0	4	14	58	133	130
maximum snow cover depth at 7 a.m. (cm)	415	487	595	700	650	415	150	15	95	100	275	400	700
mean new snow cover depth (cm)*	109	118	158	167	81	31	3	5	33	63	142	157	1067

* homogenised values

Time period: 1981–2010