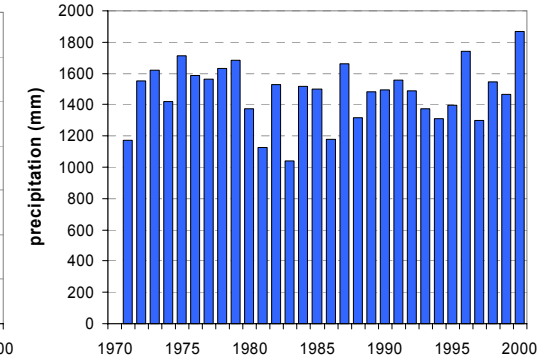
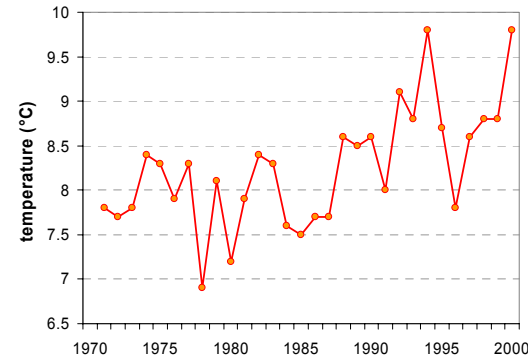
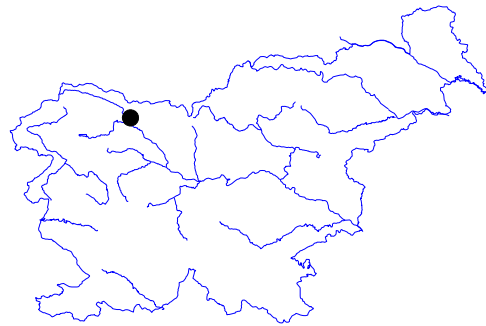


# LESCE

Latitude: 46° 22'

Longitude: 14° 11'

Elevation a. s. l.: 515 m



	JAN	FEB	MAR	APR	MAY	JUN	JUL	AUG	SEP	OCT	NOV	DEC	YEAR
mean monthly temperature (°C)	-1.7	-0.2	3.6	8.0	13.0	16.2	18.2	17.7	13.5	8.4	2.9	-0.6	8.2
mean daily maximum for a month (°C)	2.8	5.1	9.6	13.8	19.0	22.0	24.4	24.3	19.8	14.1	7.6	3.7	13.9
mean daily minimum for a month (°C)	-5.4	-4.3	-0.9	2.9	7.5	10.9	12.8	12.6	9.0	4.4	-0.6	-3.9	3.7
absolute monthly maximum (°C)	16.0	21.1	22.7	26.2	29.3	31.8	34.9	34.6	28.7	25.7	20.3	15.2	34.9
absolute monthly minimum (°C)	-23.7	-23.2	-18.5	-6.0	-3.4	2.2	4.5	3.0	-1.2	-9.5	-16.8	-18.5	-23.7
number of days with max. temperature ≤ 0 °C	7.0	3.5	0.6	0.0	0.0	0.0	0.0	0.0	0.0	0.0	1.1	5.3	17.6
number of days with min. temperature ≤ 0 °C	27.1	23.8	17.3	4.9	0.3	0.0	0.0	0.0	0.1	4.3	16.6	25.0	119.4
number of days with max. temperature ≥ 25 °C	0.0	0.0	0.0	0.1	2.5	8.4	14.4	13.8	2.4	0.1	0.0	0.0	41.7
number of days with max. temperature ≥ 30 °C	0.0	0.0	0.0	0.0	0.0	0.5	1.6	2.6	0.0	0.0	0.0	0.0	4.7
bright sunshine duration (in hours)	77	111	153	163	194	213	254	249	184	137	81	60	1873
mean monthly vapour pressure (hPa)	4.7	4.9	6.2	8.0	11.5	14.2	16.0	16.0	13.2	9.9	6.8	5.2	9.7
mean monthly relative humidity at 7 a.m. (%)	89	88	89	86	85	86	87	90	95	95	92	89	89
mean monthly relative humidity at 2 p.m. (%)	72	63	59	58	60	61	58	59	65	70	73	75	64
mean monthly relative humidity at 9 p.m. (%)	88	84	79	77	80	82	82	85	90	92	90	89	85
mean cloud amount at 7 a.m. (in tenths)	6.4	6.1	6.5	6.4	5.7	5.7	4.8	4.8	5.7	6.4	6.9	6.5	6.0
mean cloud amount at 2 p.m. (in tenths)	6.3	5.8	6.4	7.1	6.9	6.8	5.9	5.5	5.7	6.0	6.6	6.6	6.3
mean cloud amount at 9 p.m. (in tenths)	5.6	4.9	5.0	5.4	5.3	5.7	5.1	4.1	4.7	5.4	5.9	6.0	5.3
number of clear days (cloudiness < 2/10)	5.6	6.6	5.5	4.2	3.9	3.1	4.8	7.3	6.3	6.3	4.7	5.5	63.7
number of cloudy days (cloudiness > 8/10)	12.3	9.8	11.5	11.0	9.5	8.9	6.3	6.2	8.1	12.2	13.5	13.7	123.0
total amount of precipitation (mm)	82	72	93	120	120	149	141	129	136	165	160	105	1473
number of days with precipitation 0.1 mm or more	9.4	8.4	10.7	13.0	15.2	15.6	14.3	12.6	11.1	12.3	10.9	10.0	143.6
number of days with precipitation 1 mm or more	7.3	6.6	8.0	10.0	11.8	12.3	11.6	9.7	9.1	9.8	8.7	8.0	112.9
number of days with precipitation 10 mm or more	2.6	2.2	3.0	3.5	3.6	4.6	4.4	4.0	4.1	4.9	4.6	3.4	44.9
number of days with snow cover at 7 a.m.	17.3	14.4	7.3	1.2	0.1	0.0	0.0	0.0	0.0	0.0	4.9	11.2	56.6
maximum snow cover depth (cm)	82	78	57	32	12	0	0	0	0	2	46	58	82
number of days with thunderstorm and thunder	0.3	0.2	0.6	1.7	4.8	7.5	8.0	6.5	3.7	2.0	1.2	0.5	36.9
number of days with fog	4.3	2.6	2.1	0.7	0.3	0.1	0.1	0.2	1.2	2.7	4.6	5.3	24.3

Time period: 1971–2000