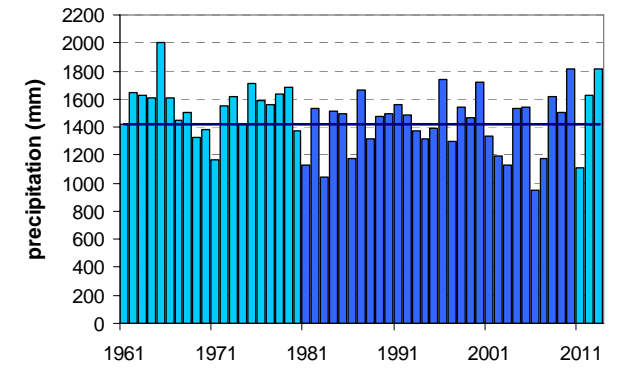
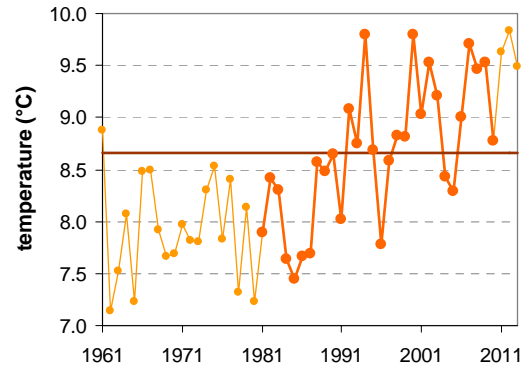
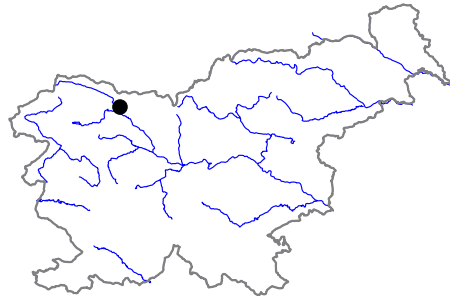


LESCE

Latitude: 46° 22'

Longitude: 14° 11'

Elevation a. s. l.: 515 m



	JAN	FEB	MAR	APR	MAY	JUN	JUL	AUG	SEP	OCT	NOV	DEC	YEAR
mean monthly temperature (°C)*	-1.7	-0.3	3.9	8.6	13.6	16.9	18.9	18.2	13.7	9.1	3.5	-0.5	8.7
mean daily maximum for a month (°C)*	3.0	5.3	9.8	14.4	19.6	22.7	25.3	24.8	19.9	14.6	8.1	3.6	14.2
mean daily minimum for a month (°C)*	-5.6	-4.7	-0.9	3.3	8.0	11.5	13.3	13.2	9.3	5.2	0.1	-3.8	4.1
absolute monthly maximum (°C)	15.5	21.1	23.0	26.2	31.0	33.0	34.9	36.5	27.9	25.7	19.1	14.0	36.5
absolute monthly minimum (°C)	-23.7	-23.2	-18.9	-6.0	-3.0	1.0	4.5	3.0	-1.2	-9.5	-16.8	-18.5	-23.7
number of days with max. temperature < 0 °C	8	4	0	0	0	0	0	0	0	0	1	5	18
number of days with min. temperature < 0 °C	27	24	17	4	0	0	0	0	0	3	15	24	116
number of days with max. temperature > 25 °C	0	0	0	0	3	10	16	16	2	0	0	0	47
number of days with max. temperature > 30 °C	0	0	0	0	0	1	3	3	0	0	0	0	7
bright sunshine duration (in hours)*	94	126	153	169	211	219	269	249	191	146	89	77	1993
mean monthly relative humidity at 7 a.m. (%)	90	88	89	86	84	84	84	89	93	94	92	90	89
mean monthly relative humidity at 2 p.m. (%)	70	60	56	54	54	56	54	55	60	66	72	74	61
mean monthly relative humidity at 9 p.m. (%)	88	83	77	76	78	79	79	83	89	91	90	88	83
mean cloud amount at 7 a.m. (in tenths)	6.0	5.9	6.5	6.3	5.8	5.6	4.5	4.8	5.6	6.4	7.0	6.6	5.9
mean cloud amount at 2 p.m. (in tenths)	6.2	5.7	6.6	7.2	7.0	6.5	5.7	5.5	5.8	6.1	6.7	6.7	6.3
mean cloud amount at 9 p.m. (in tenths)	5.3	4.7	5.0	5.1	4.9	5.4	4.5	4.0	4.8	5.6	5.9	6.1	5.1
number of clear days (cloudiness < 2/10)	6	7	5	5	4	4	6	8	6	6	5	5	66
number of cloudy days (cloudiness > 8/10)	11	9	11	11	9	9	5	6	8	12	14	14	119
total amount of precipitation (mm)*	63	64	90	106	108	135	132	137	152	157	157	119	1418
number of days with precipitation 0.1 mm or more	9	8	11	14	14	15	13	13	12	12	11	10	142
number of days with precipitation 1 mm or more	7	6	8	10	11	12	10	10	9	10	9	9	111
number of days with precipitation 10 mm or more	2	2	3	3	3	4	4	4	4	5	5	4	43
number of days with snow cover at 7 a.m.	15	14	8	1	0	0	0	0	0	0	3	11	51
mean snow cover depth at 7 a.m. (cm)*	8	9	4	0	0	0	0	0	0	0	2	5	2.4
maximum snow cover depth at 7 a.m. (cm)	82	78	54	21	12	0	0	0	0	18	45	68	82
mean new snow cover depth (cm)*	24	32	16	5	0	0	0	0	0	1	15	25	117

* homogenised values

Time period: 1981–2010