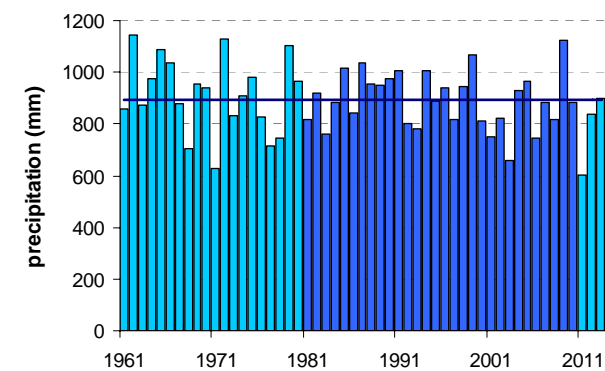
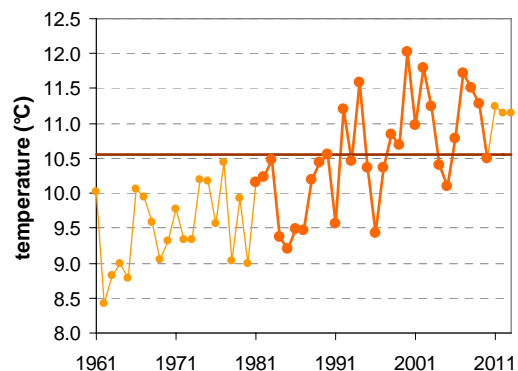


MARIBOR TABOR

Latitude: 46° 32'

Longitude: 15° 39'

Elevation a. s. l.: 275 m



	JAN	FEB	MAR	APR	MAY	JUN	JUL	AUG	SEP	OCT	NOV	DEC	YEAR
mean monthly temperature (°C)*	-0.2	1.7	6.0	10.8	15.8	19.0	21.0	20.3	15.7	10.7	5.1	0.9	10.6
mean daily maximum for a month (°C)*	3.9	6.6	11.4	16.2	21.3	24.4	26.6	26.1	21.4	16.0	9.2	4.4	15.6
mean daily minimum for a month (°C)*	-3.6	-2.3	1.6	5.9	10.5	13.7	15.6	15.4	11.3	6.8	1.8	-2.0	6.2
absolute monthly maximum (°C)	17.9	21.5	26.0	28.0	33.5	36.0	37.7	38.8	31.4	27.1	21.9	20.7	38.8
absolute monthly minimum (°C)	-21.0	-20.2	-14.8	-5.1	0.6	3.6	6.3	5.5	1.0	-4.3	-12.6	-17.6	-21.0
number of days with max. temperature < 0 °C	8	4	0	0	0	0	0	0	0	0	1	6	19
number of days with min. temperature < 0 °C	24	19	9	1	0	0	0	0	0	1	10	21	87
number of days with max. temperature > 25 °C	0	0	0	1	6	13	21	19	6	1	0	0	66
number of days with max. temperature > 30 °C	0	0	0	0	0	3	6	5	0	0	0	0	14
bright sunshine duration (in hours)*	—	—	—	—	—	—	—	—	—	—	—	—	—
mean monthly relative humidity at 7 a.m. (%)	86	85	83	78	77	76	76	81	88	91	89	88	83
mean monthly relative humidity at 2 p.m. (%)	67	57	52	50	51	53	50	51	56	61	67	72	57
mean monthly relative humidity at 9 p.m. (%)	81	76	70	67	70	72	72	75	82	86	85	85	77
mean cloud amount at 7 a.m. (in tenths)	6.7	6.1	6.6	6.2	5.6	5.5	4.7	4.7	5.6	6.5	7.1	7.3	6.1
mean cloud amount at 2 p.m. (in tenths)	6.6	6.0	6.5	6.5	6.2	6.0	5.1	5.1	5.6	6.0	6.9	7.1	6.1
mean cloud amount at 9 p.m. (in tenths)	6.2	5.5	5.8	5.6	5.4	5.7	4.9	4.4	5.0	5.3	6.4	6.7	5.6
number of clear days (cloudiness < 2/10)	4	5	4	3	3	3	6	7	5	4	3	2	49
number of cloudy days (cloudiness > 8/10)	13	9	11	9	8	7	5	5	8	10	13	14	111
total amount of precipitation (mm)*	35	38	57	60	83	107	94	112	99	78	69	61	893
number of days with precipitation 0.1 mm or more	9	8	10	13	14	15	13	12	11	10	11	11	137
number of days with precipitation 1 mm or more	5	5	7	9	10	11	10	9	8	7	8	8	97
number of days with precipitation 10 mm or more	1	2	2	2	3	4	4	4	4	3	3	2	34
number of days with snow cover at 7 a.m.	15	12	5	0	0	0	0	0	0	0	3	10	46
mean snow cover depth at 7 a.m. (cm)*	7	7	2	0	0	0	0	0	0	0	1	4	1.7
maximum snow cover depth at 7 a.m. (cm)	48	60	56	25	1	0	0	0	0	2	35	50	60
mean new snow cover depth (cm)*	18	22	9	2	0	0	0	0	0	0	9	22	81

* homogenised values

Time period: 1981–2010