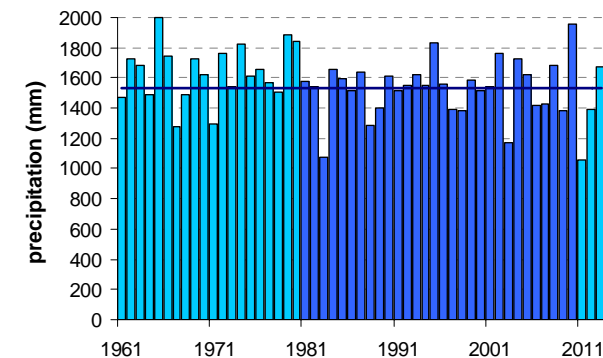
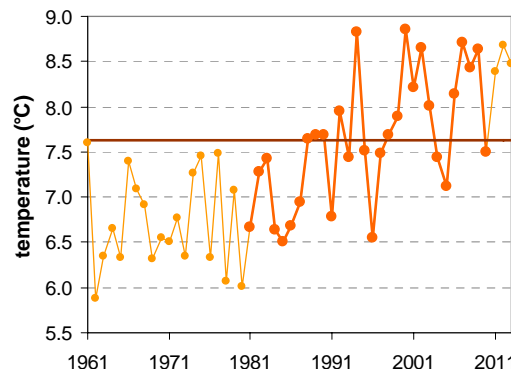
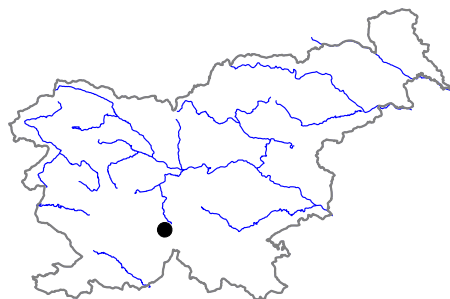


# NOVA VAS (NA BLOKAH)

Latitude: 45° 46'

Longitude: 14° 31'

Elevation: 722 m a. s. l.



	JAN	FEB	MAR	APR	MAY	JUN	JUL	AUG	SEP	OCT	NOV	DEC	YEAR
mean monthly temperature (°C)*	-1.8	-1.0	2.7	6.8	12.0	15.4	17.5	16.6	12.4	8.5	3.2	-0.6	7.6
mean daily maximum for a month (°C)*	3.1	4.6	8.5	12.7	17.9	21.3	24.1	23.7	18.9	13.9	7.9	3.5	13.3
mean daily minimum for a month (°C)*	-6.0	-6.0	-2.2	1.5	5.9	9.2	10.8	10.6	7.1	4.2	-0.6	-4.6	2.5
absolute monthly maximum (°C)	18.3	19.1	22.9	24.8	30.6	31.8	34.1	34.1	30.0	24.3	19.3	15.8	34.1
absolute monthly minimum (°C)	-32.5	-27.1	-25.4	-14.5	-4.9	-1.8	0.7	0.0	-3.7	-17.3	-18.9	-26.6	-32.5
number of days with max. temperature < 0 °C	9	6	2	0	0	0	0	0	0	0	2	7	26
number of days with min. temperature < 0 °C	26	23	20	10	1	0	0	0	1	7	16	23	127
number of days with max. temperature > 25 °C	0	0	0	0	1	6	13	12	1	0	0	0	34
number of days with max. temperature > 30 °C	0	0	0	0	0	0	2	2	0	0	0	0	3
bright sunshine duration (in hours)*	—	—	—	—	—	—	—	—	—	—	—	—	—
mean monthly relative humidity at 7 a.m. (%)	90	90	90	89	87	87	87	93	94	93	92	90	90
mean monthly relative humidity at 2 p.m. (%)	73	64	60	58	57	57	53	55	61	68	74	77	63
mean monthly relative humidity at 9 p.m. (%)	88	86	84	83	83	84	83	87	90	92	90	91	87
mean cloud amount at 7 a.m. (in tenths)	6.6	6.2	6.2	6.0	5.1	4.8	3.7	3.9	5.4	6.9	7.2	7.1	5.8
mean cloud amount at 2 p.m. (in tenths)	6.0	5.6	6.1	6.6	6.1	5.8	5.0	5.0	5.6	6.1	6.7	6.7	5.9
mean cloud amount at 9 p.m. (in tenths)	5.9	5.4	5.2	5.0	4.5	4.3	3.3	3.2	4.2	5.4	6.3	6.4	4.9
number of clear days (cloudiness < 2/10)	6	6	5	5	5	5	8	10	6	5	4	4	68
number of cloudy days (cloudiness > 8/10)	13	10	10	9	6	5	3	4	6	11	14	14	106
total amount of precipitation (mm)*	80	89	107	130	127	156	103	149	154	164	147	132	1536
number of days with precipitation 0.1 mm or more	11	10	12	15	14	15	11	12	12	14	14	14	155
number of days with precipitation 1 mm or more	9	8	9	12	11	12	8	9	10	10	11	11	119
number of days with precipitation 10 mm or more	3	3	3	4	4	5	3	4	4	5	5	4	49
number of days with snow cover at 7 a.m.	19	17	14	3	0	0	0	0	0	1	6	18	78
mean snow cover depth at 7 a.m. (cm)*	14	17	11	1	0	0	0	0	0	0	4	9	4.7
maximum snow cover depth at 7 a.m. (cm)	82	105	86	45	19	0	0	0	0	25	72	60	105
mean new snow cover depth (cm)*	41	50	36	15	1	0	0	0	0	2	27	46	218

\* homogenised values

Time period: 1981–2010