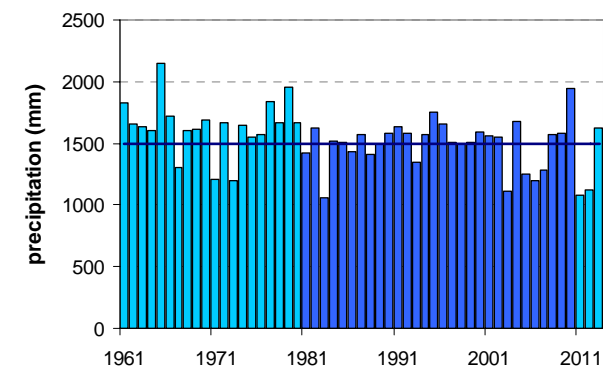
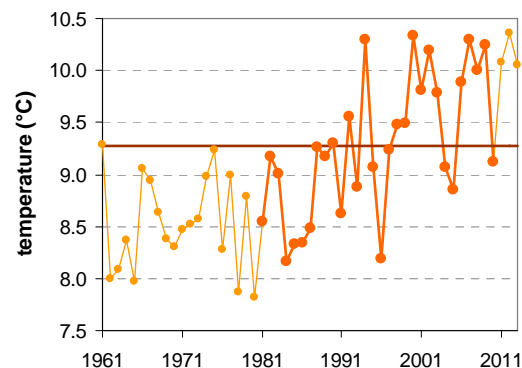
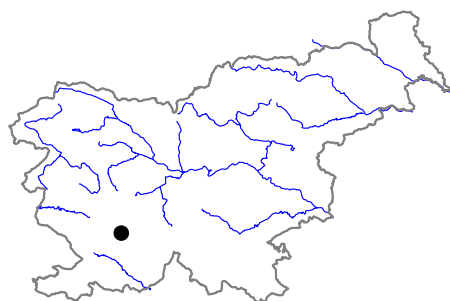


POSTOJNA

Latitude: 45° 46'

Longitude: 14° 12'

Elevation a. s. l.: 533 m



	JAN	FEB	MAR	APR	MAY	JUN	JUL	AUG	SEP	OCT	NOV	DEC	YEAR
mean monthly temperature (°C)*	-0.1	0.8	4.4	8.3	13.4	16.8	19.0	18.3	14.1	10.1	5.0	1.1	9.3
mean daily maximum for a month (°C)*	3.6	5.5	9.6	13.8	19.1	22.6	25.5	25.2	20.2	14.9	8.7	4.4	14.4
mean daily minimum for a month (°C)*	-3.7	-3.4	-0.3	3.2	7.4	10.7	12.5	12.5	9.3	6.3	1.7	-2.2	4.5
absolute monthly maximum (°C)	15.0	21.0	23.0	24.8	31.6	33.8	35.0	35.0	30.5	25.6	19.2	15.6	35.0
absolute monthly minimum (°C)	-23.7	-17.5	-19.5	-9.2	-3.0	1.4	3.6	2.0	-2.0	-9.6	-15.6	-19.0	-23.7
number of days with max. temperature < 0 °C	7	4	1	0	0	0	0	0	0	0	1	5	18
number of days with min. temperature < 0 °C	23	21	15	6	0	0	0	0	0	3	11	21	99
number of days with max. temperature > 25 °C	0	0	0	0	2	8	17	16	2	0	0	0	45
number of days with max. temperature > 30 °C	0	0	0	0	0	1	3	3	0	0	0	0	6
bright sunshine duration (in hours)*	98	121	154	172	219	241	292	268	196	144	91	82	2079
mean monthly relative humidity at 7 a.m. (%)	89	88	89	90	89	89	87	91	93	93	92	90	90
mean monthly relative humidity at 2 p.m. (%)	73	63	59	58	58	58	52	53	60	67	73	76	62
mean monthly relative humidity at 9 p.m. (%)	86	82	79	79	81	83	80	84	89	90	89	88	84
mean cloud amount at 7 a.m. (in tenths)	6.5	6.1	6.3	6.3	5.6	5.3	4.0	4.3	6.0	7.0	7.3	6.9	6.0
mean cloud amount at 2 p.m. (in tenths)	6.0	5.6	6.1	6.6	6.3	6.0	5.1	4.9	5.5	6.1	6.6	6.5	5.9
mean cloud amount at 9 p.m. (in tenths)	5.7	5.1	5.1	5.3	4.8	4.9	3.7	3.2	4.2	5.4	6.3	6.1	5.0
number of clear days (cloudiness < 2/10)	6	7	5	4	4	4	7	9	6	4	4	5	65
number of cloudy days (cloudiness > 8/10)	13	10	11	10	8	6	3	4	7	12	14	14	111
total amount of precipitation (mm)*	91	81	107	123	127	138	87	113	157	165	162	148	1500
number of days with precipitation 0.1 mm or more	10	9	11	14	13	14	11	11	11	13	13	12	142
number of days with precipitation 1 mm or more	8	7	8	11	11	11	8	9	9	10	11	10	114
number of days with precipitation 10 mm or more	3	3	3	4	5	5	3	4	5	5	5	5	50
number of days with snow cover at 7 a.m.	12	10	5	1	0	0	0	0	0	0	3	7	38
mean snow cover depth at 7 a.m. (cm)*	6	5	2	0	0	0	0	0	0	0	1	2	1.4
maximum snow cover depth at 7 a.m. (cm)	75	48	43	30	1	0	0	0	0	10	60	50	75
mean new snow cover depth (cm)*	—	—	—	—	—	—	—	—	—	—	—	—	—

* homogenised values

Time period: 1981–2010