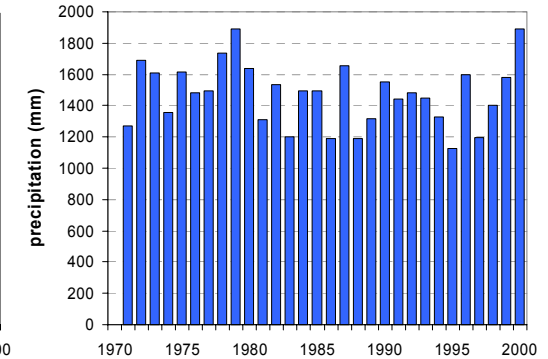
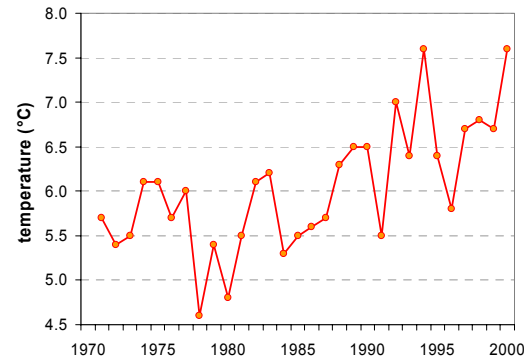


# RATEČE

Latitude: 46° 30'

Longitude: 13° 43'

Elevation a. s. l.: 864 m



	JAN	FEB	MAR	APR	MAY	JUN	JUL	AUG	SEP	OCT	NOV	DEC	YEAR
mean monthly temperature (°C)	-3.9	-2.1	1.4	5.2	10.6	14.0	16.1	15.5	11.4	6.5	0.8	-3.1	6.0
mean daily maximum for a month (°C)	1.4	4.1	7.9	11.6	16.9	20.3	22.8	22.5	18.3	13.0	6.1	1.5	12.2
mean daily minimum for a month (°C)	-8.0	-7.0	-3.4	0.1	4.6	7.9	9.9	9.7	6.3	2.2	-2.9	-6.6	1.1
absolute monthly maximum (°C)	11.8	17.8	21.4	23.2	28.8	30.2	36.1	33.2	28.8	24.6	19.3	13.5	36.1
absolute monthly minimum (°C)	-26.4	-22.0	-22.0	-12.2	-10.7	-1.6	1.0	-0.5	-4.6	-12.3	-19.2	-21.2	-26.4
number of days with max. temperature ≤ 0 °C	10.3	4.6	1.1	0.1	0.0	0.0	0.0	0.0	0.0	0.1	2.8	10.5	29.4
number of days with min. temperature ≤ 0 °C	29.5	26.4	25.0	14.2	2.1	0.2	0.0	0.0	1.4	9.7	22.3	28.4	159.3
number of days with max. temperature ≥ 25 °C	0.0	0.0	0.0	0.0	0.7	4.8	9.7	9.1	1.1	0.0	0.0	0.0	25.4
number of days with max. temperature ≥ 30 °C	0.0	0.0	0.0	0.0	0.0	0.0	0.6	0.9	0.0	0.0	0.0	0.0	1.5
bright sunshine duration (in hours)	87	122	155	161	184	196	235	231	192	141	89	59	1850
mean monthly vapour pressure (hPa)	4.1	4.3	5.2	6.6	9.6	11.9	13.6	13.5	11.1	8.2	5.8	4.5	8.2
mean monthly relative humidity at 7 a.m. (%)	91	92	92	93	92	91	92	94	95	95	94	92	93
mean monthly relative humidity at 2 p.m. (%)	71	59	56	53	54	54	52	53	59	62	70	76	60
mean monthly relative humidity at 9 p.m. (%)	89	85	83	81	81	82	82	86	90	91	91	90	86
mean cloud amount at 7 a.m. (in tenths)	5.6	5.4	6.3	6.5	5.8	5.7	5.0	4.9	5.9	6.3	6.4	5.8	5.8
mean cloud amount at 2 p.m. (in tenths)	5.5	5.3	6.1	7.0	6.9	6.8	5.8	5.5	5.5	5.6	5.9	5.8	6.0
mean cloud amount at 9 p.m. (in tenths)	5.3	5.0	5.3	5.8	5.9	6.1	5.4	4.6	4.7	5.2	5.6	5.3	5.3
number of clear days (cloudiness < 2/10)	6.8	7.4	4.7	3.1	2.6	2.4	3.7	6.0	5.4	5.8	5.2	6.3	59.4
number of cloudy days (cloudiness > 8/10)	9.9	8.2	10.3	11.1	9.5	9.1	5.9	5.5	7.2	10.6	11.2	10.5	108.9
total amount of precipitation (mm)	69	65	87	123	131	155	149	132	149	167	150	96	1474
number of days with precipitation 0.1 mm or more	9.6	8.5	10.7	13.8	16.1	16.9	15.1	13.1	11.6	11.8	10.6	9.8	147.6
number of days with precipitation 1 mm or more	6.5	6.1	8.0	10.5	12.1	13.2	11.8	10.2	8.9	9.4	8.5	7.8	113.0
number of days with precipitation 10 mm or more	2.5	2.0	2.8	4.0	4.0	5.0	4.9	4.3	4.5	4.5	4.3	3.3	45.9
number of days with snow cover at 7 a.m.	28.7	25.1	24.0	9.5	0.7	0.0	0.0	0.0	0.0	1.1	11.5	26.4	127.0
maximum snow cover depth (cm)	144	190	144	110	40	1	0	0	0	28	72	118	190
number of days with thunderstorm and thunder	0.4	0.4	0.7	1.2	4.3	7.1	7.9	6.5	3.8	1.6	1.4	0.3	35.7
number of days with fog	3.5	2.3	2.4	1.0	1.2	0.7	0.9	2.1	4.8	4.1	4.4	4.9	32.3

Time period: 1971–2000