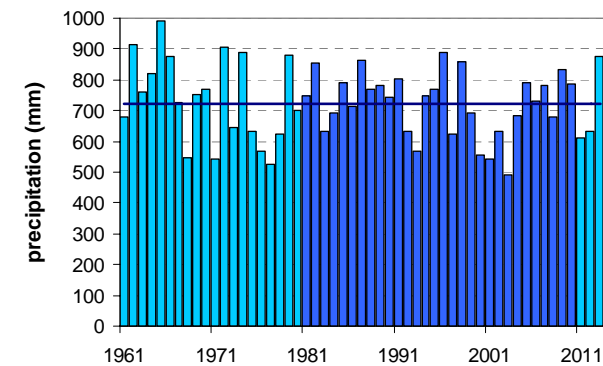
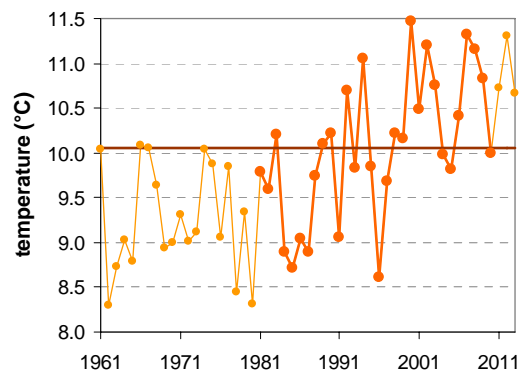


# ŠALOVCI

Latitude: 46° 50'

Longitude: 16° 18'

Elevation: 308 m a. s. l.



	JAN	FEB	MAR	APR	MAY	JUN	JUL	AUG	SEP	OCT	NOV	DEC	YEAR
mean monthly temperature (°C)*	-0,5	1,4	5,5	10,4	15,2	18,1	20,2	19,7	15,3	10,3	4,6	0,5	10,1
mean daily maximum for a month (°C)*	2,6	5,2	10,1	15,2	20,3	23,2	25,5	25,1	20,3	14,9	8,0	3,2	14,5
mean daily minimum for a month (°C)*	-3,6	-3,0	1,7	5,4	10,1	13,0	14,6	15,1	10,5	6,2	1,3	-2,4	5,8
absolute monthly maximum (°C)	19,2	21,6	23,8	26,5	32,0	34,4	37,1	37,4	30,5	25,5	21,1	18,4	37,4
absolute monthly minimum (°C)	-20,5	-17,4	-14,8	-4,5	1,6	2,8	7,0	5,5	3,0	-5,5	-11,0	-17,4	-20,5
number of days with max. temperature < 0 °C	10	5	1	0	0	0	0	0	0	0	1	8	26
number of days with min. temperature < 0 °C	24	20	10	2	0	0	0	0	0	2	11	22	90
number of days with max. temperature > 25 °C	0	0	0	0	4	11	17	15	3	0	0	0	51
number of days with max. temperature > 30 °C	0	0	0	0	0	2	3	4	0	0	0	0	9
bright sunshine duration (in hours)*	—	—	—	—	—	—	—	—	—	—	—	—	—
mean monthly relative humidity at 7 a.m. (%)	87	83	81	79	79	79	78	83	88	92	90	89	84
mean monthly relative humidity at 2 p.m. (%)	72	59	54	51	53	55	52	53	58	64	72	77	60
mean monthly relative humidity at 9 p.m. (%)	83	75	70	68	72	75	73	75	81	85	86	87	77
mean cloud amount at 7 a.m. (in tenths)	6,6	6,4	6,8	5,8	5,2	5,2	4,6	4,8	5,6	6,7	7,4	7,1	6,0
mean cloud amount at 2 p.m. (in tenths)	6,5	5,5	6,0	6,0	5,8	5,7	5,1	4,8	5,4	5,7	6,7	7,0	5,9
mean cloud amount at 9 p.m. (in tenths)	5,4	4,5	4,3	4,1	4,1	5,1	4,4	3,3	3,7	4,0	5,6	6,2	4,6
number of clear days (cloudiness < 2/10)	4	4	3	4	5	4	6	7	5	4	2	3	50
number of cloudy days (cloudiness > 8/10)	10	7	6	5	5	4	3	3	5	7	11	13	80
total amount of precipitation (mm)*	27	26	40	47	76	94	82	92	81	58	56	44	723
number of days with precipitation 0.1 mm or more	6	6	8	11	12	13	12	10	10	9	10	9	116
number of days with precipitation 1 mm or more	4	4	5	7	9	11	9	8	7	7	7	7	85
number of days with precipitation 10 mm or more	1	1	1	1	2	4	3	3	3	2	2	1	25
number of days with snow cover at 7 a.m.	11	10	4	0	0	0	0	0	0	0	2	7	35
mean snow cover depth at 7 a.m. (cm)*	6	6	2	0	0	0	0	0	0	0	1	3	1,5
maximum snow cover depth at 7 a.m. (cm)	66	61	52	8	0	0	0	0	0	8	36	40	66
mean new snow cover depth (cm)*	—	—	—	—	—	—	—	—	—	—	—	—	—

\* homogenised values

Time period: 1981–2010