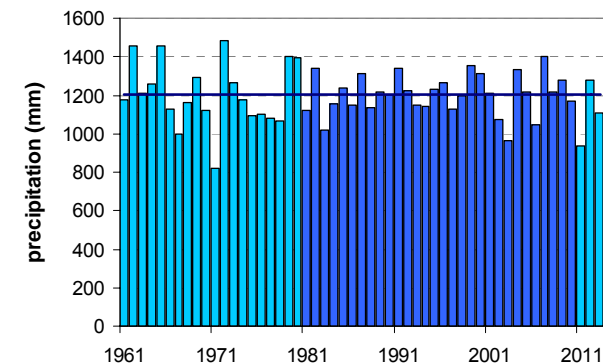
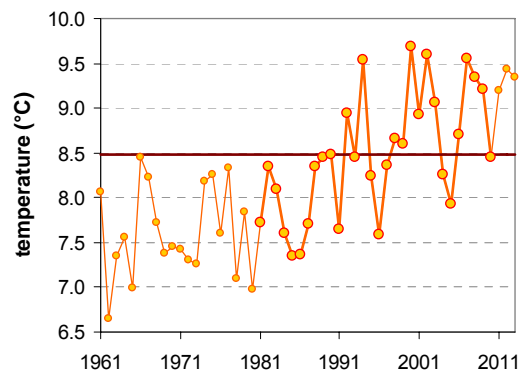


# ŠMARTNO PRI SLOVENJ GRADCU

Latitude: 46° 29'

Longitude: 15° 7'

Elevation: 455 m a. s. l.



	JAN	FEB	MAR	APR	MAY	JUN	JUL	AUG	SEP	OCT	NOV	DEC	YEAR
mean monthly temperature (°C)*	-2.5	-0.6	3.8	8.5	13.7	17.0	18.7	17.9	13.7	9.2	3.5	-1.2	8.5
mean daily maximum for a month (°C)*	2.2	5.3	9.9	14.7	19.9	22.9	25.2	24.6	20.1	15.0	8.0	2.6	14.2
mean daily minimum for a month (°C)*	-6.4	-5.2	-1.3	2.7	7.4	11.0	12.5	12.2	8.6	4.7	-0.1	-4.5	3.5
absolute monthly maximum (°C)	14.8	19.7	22.8	28.4	31.6	33.3	34.7	35.3	29.3	25.0	20.2	17.1	35.3
absolute monthly minimum (°C)	-27.0	-26.0	-23.1	-7.8	-3.2	0.8	3.2	1.0	-2.5	-9.4	-19.2	-21.0	-27.0
number of days with max. temperature ≤ 0 °C	10	4	1	0	0	0	0	0	0	0	1	8	24
number of days with min. temperature ≤ 0 °C	29	25	20	7	1	0	0	0	0	5	16	26	128
number of days with max. temperature ≥ 25 °C	0	0	0	0	4	10	17	15	3	0	0	0	50
number of days with max. temperature ≥ 30 °C	0	0	0	0	0	1	3	3	0	0	0	0	7
bright sunshine duration (in hours)*	92	121	149	173	215	224	259	236	177	132	84	69	1931
mean monthly relative humidity at 7 a.m. (%)	92	92	92	91	88	87	89	93	95	95	94	93	92
mean monthly relative humidity at 2 p.m. (%)	74	61	56	53	52	54	53	54	58	65	73	79	61
mean monthly relative humidity at 9 p.m. (%)	88	82	78	76	76	78	80	84	88	90	90	90	83
mean cloud amount at 7 a.m. (in tenths)	7.4	6.8	7.1	6.9	6.2	6.2	5.4	6.0	8.0	8.5	8.2	8.0	7.1
mean cloud amount at 2 p.m. (in tenths)	6.3	5.9	6.8	7.2	6.7	6.5	5.8	5.7	5.9	6.1	6.9	7.0	6.4
mean cloud amount at 9 p.m. (in tenths)	6.5	5.8	6.3	5.9	5.8	6.0	5.2	4.8	5.0	5.7	6.9	7.2	5.9
number of clear days (cloudiness < 2/10)	3	4	3	3	2	2	4	5	2	1	2	2	33
number of cloudy days (cloudiness > 8/10)	14	10	13	12	10	9	6	7	10	12	16	17	134
total amount of precipitation (mm)*	43	44	70	81	99	151	144	146	136	115	99	77	1205
number of days with precipitation 0.1 mm or more	9	8	10	13	14	15	13	13	11	11	11	11	139
number of days with precipitation 1 mm or more	6	6	7	9	11	12	10	10	8	8	8	8	102
number of days with precipitation 10 mm or more	1	1	2	2	3	5	5	5	4	4	3	2	38
number of days with snow cover at 7 a.m.	20	16	9	1	0	0	0	0	0	0	4	14	64
mean snow cover depth at 7 a.m. (cm)*	10	11	4	0	0	0	0	0	0	0	1	5	2.6
maximum snow cover depth at 7 a.m. (cm)	65	70	55	20	4	0	0	0	0	1	48	55	70
mean new snow cover depth (cm)*	21	27	15	3	0	0	0	0	0	0	10	24	101

\* homogenised values

Time period: 1981–2010