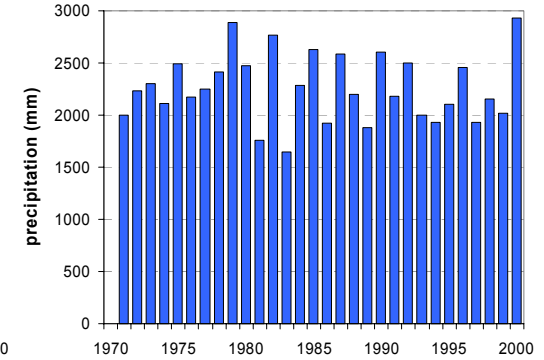
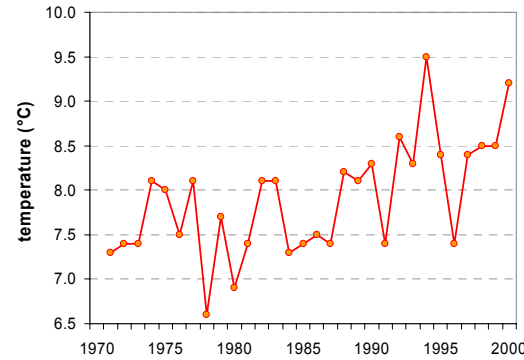
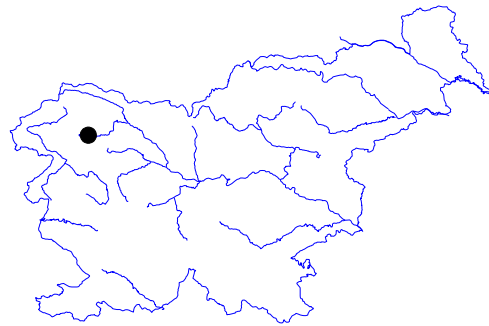


# STARA FUŽINA

Latitude: 46° 17'

Longitude: 13° 54'

Elevation a. s. l.: 547 m



	JAN	FEB	MAR	APR	MAY	JUN	JUL	AUG	SEP	OCT	NOV	DEC	YEAR
mean monthly temperature (°C)	-2.0	-0.6	3.3	7.2	12.2	15.4	17.6	17.2	13.5	8.6	2.7	-0.8	7.9
mean daily maximum for a month (°C)	2.6	5.6	9.9	13.6	18.8	22.2	24.8	24.7	20.4	14.6	7.5	3.1	14.0
mean daily minimum for a month (°C)	-5.7	-5.2	-1.7	1.8	6.3	9.7	11.7	11.6	8.7	4.5	-0.6	-3.9	3.1
absolute monthly maximum (°C)	15.5	20.5	23.5	26.4	29.5	31.6	37.7	35.5	29.6	24.6	19.6	16.4	37.7
absolute monthly minimum (°C)	-24.1	-25.2	-20.8	-7.4	-2.4	0.6	3.4	1.5	-1.8	-9.4	-15.8	-17.4	-25.2
number of days with max. temperature ≤ 0 °C	6.7	2.1	0.5	0.0	0.0	0.0	0.0	0.0	0.0	0.0	0.9	5.1	15.2
number of days with min. temperature ≤ 0 °C	27.2	24.4	19.4	7.7	0.6	0.0	0.0	0.0	0.1	4.4	17.0	25.1	126.1
number of days with max. temperature ≥ 25 °C	0.0	0.0	0.0	0.1	2.2	8.5	16.1	15.7	3.9	0.0	0.0	0.0	46.5
number of days with max. temperature ≥ 30 °C	0.0	0.0	0.0	0.0	0.0	0.6	2.0	3.3	0.0	0.0	0.0	0.0	5.9
bright sunshine duration (in hours)	51	85	133	141	165	176	206	203	147	109	61	38	1515
mean monthly vapour pressure (hPa)	4.7	4.8	5.9	7.5	10.9	13.6	15.5	15.4	12.7	9.5	6.7	5.2	9.4
mean monthly relative humidity at 7 a.m. (%)	91	92	92	92	93	94	94	95	95	95	93	92	93
mean monthly relative humidity at 2 p.m. (%)	74	60	55	56	57	57	55	56	60	64	73	79	62
mean monthly relative humidity at 9 p.m. (%)	90	87	82	79	82	84	85	87	91	91	91	91	86
mean cloud amount at 7 a.m. (in tenths)	8.0	6.9	7.1	7.2	6.9	7.0	7.1	7.7	9.1	9.1	8.9	8.6	7.8
mean cloud amount at 2 p.m. (in tenths)	6.0	5.5	6.4	7.2	7.3	7.2	6.6	6.2	6.1	6.1	6.5	6.5	6.4
mean cloud amount at 9 p.m. (in tenths)	6.1	5.1	5.4	5.6	6.3	6.1	5.6	4.9	5.2	5.6	6.4	6.9	5.8
number of clear days (cloudiness < 2/10)	3.4	5.5	4.3	3.1	2.1	2.0	1.8	2.1	0.6	1.2	1.5	2.5	30.1
number of cloudy days (cloudiness > 8/10)	14.3	10.4	12.2	12.4	13.0	11.2	9.2	8.7	11.1	13.8	15.3	16.4	148.0
total amount of precipitation (mm)	143	119	139	183	176	213	177	167	204	264	282	195	2261
number of days with precipitation 0.1 mm or more	10.9	9.9	12.2	15.1	16.7	17.3	15.9	13.9	12.5	12.8	12.1	11.0	160.3
number of days with precipitation 1 mm or more	8.3	7.3	8.9	11.3	13.2	13.3	11.8	10.3	9.7	10.5	9.9	8.1	122.7
number of days with precipitation 10 mm or more	3.6	3.2	4.1	5.3	4.7	5.9	5.1	4.7	5.1	5.9	5.3	5.0	57.9
number of days with snow cover at 7 a.m.	23.4	20.3	19.2	5.1	0.5	0.0	0.0	0.0	0.0	0.2	8.1	19.0	95.7
maximum snow cover depth (cm)	136	155	110	65	19	0	0	0	0	10	79	126	155
number of days with thunderstorm and thunder	0.6	0.6	1.3	2.1	5.3	7.7	7.9	6.5	3.7	2.3	1.2	0.7	39.8
number of days with fog	12.3	8.2	7.6	5.2	6.2	6.8	10.8	14.0	17.8	14.3	13.2	15.0	131.3

Time period: 1971–2000