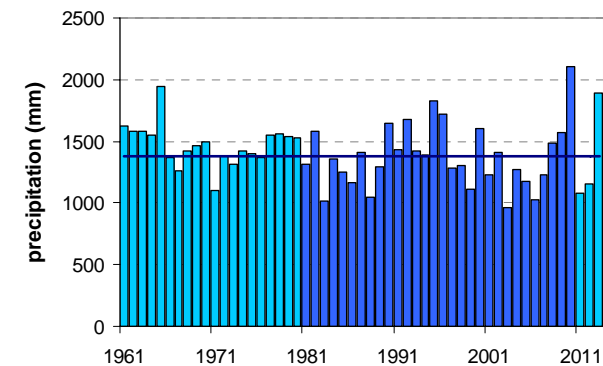
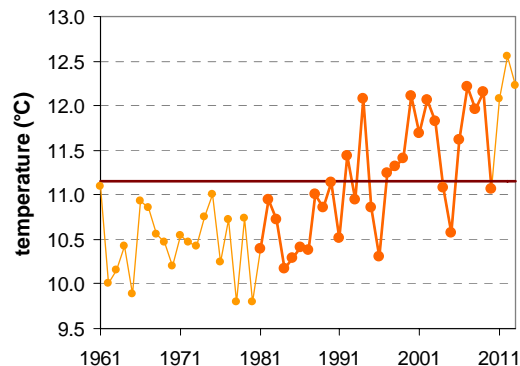


TOMAJ (GODNJE)

Latitude: 45° 45'

Longitude: 13° 51'

Elevation a. s. l.: 320 m



	JAN	FEB	MAR	APR	MAY	JUN	JUL	AUG	SEP	OCT	NOV	DEC	YEAR
mean monthly temperature (°C)*	2.1	2.8	6.3	10.3	15.2	18.5	20.8	20.3	15.9	11.5	6.8	3.3	11.2
mean daily maximum for a month (°C)*	6.7	8.2	12.1	16.0	21.0	24.4	27.4	27.2	22.4	17.4	11.6	7.7	16.8
mean daily minimum for a month (°C)*	-2.1	-1.9	0.8	4.8	9.3	12.8	14.8	14.7	10.6	7.1	2.3	-1.2	6.0
absolute monthly maximum (°C)	18.5	21.5	23.5	27.0	33.0	35.5	37.5	37.0	31.7	27.5	24.5	17.8	37.5
absolute monthly minimum (°C)	-15.7	-15.5	-12.7	-6.5	-0.8	4.5	6.0	4.9	3.5	-5.6	-10.0	-12.5	-15.7
number of days with max. temperature < 0 °C	1	1	0	0	0	0	0	0	0	0	0	1	2
number of days with min. temperature < 0 °C	18	17	9	1	0	0	0	0	0	1	7	15	68
number of days with max. temperature > 25 °C	0	0	0	0	4	13	23	22	7	0	0	0	70
number of days with max. temperature > 30 °C	0	0	0	0	0	2	7	7	0	0	0	0	17
bright sunshine duration (in hours)*	119	139	166	182	235	256	304	283	207	156	106	100	2251
mean monthly relative humidity at 7 a.m. (%)	76	74	74	75	75	76	73	75	81	83	81	77	77
mean monthly relative humidity at 2 p.m. (%)	60	53	51	51	50	51	45	45	52	60	62	61	53
mean monthly relative humidity at 9 p.m. (%)	75	72	70	72	74	75	72	74	79	83	80	75	75
mean cloud amount at 7 a.m. (in tenths)	5.6	5.4	5.5	5.6	4.9	4.6	3.3	3.6	4.6	5.5	6.4	5.9	5.1
mean cloud amount at 2 p.m. (in tenths)	5.7	5.1	5.3	5.7	5.3	4.7	3.6	3.8	4.7	5.3	6.2	6.0	5.1
mean cloud amount at 9 p.m. (in tenths)	5.1	4.4	4.7	5.1	4.4	4.3	3.2	3.1	3.9	4.9	5.8	5.4	4.5
number of clear days (cloudiness < 2/10)	9	9	8	7	8	9	13	13	10	9	6	8	110
number of cloudy days (cloudiness > 8/10)	12	9	9	10	7	5	3	3	6	10	13	13	100
total amount of precipitation (mm)*	87	76	90	99	115	126	82	117	140	154	157	134	1377
number of days with precipitation 0.1 mm or more	10	8	9	13	11	12	9	10	11	12	12	11	129
number of days with precipitation 1 mm or more	8	7	8	10	9	10	7	8	9	10	10	9	104
number of days with precipitation 10 mm or more	3	3	3	4	4	4	2	4	5	5	5	5	45
number of days with snow cover at 7 a.m.	3	2	0	0	0	0	0	0	0	0	0	1	6
mean snow cover depth at 7 a.m. (cm)*	—	—	—	—	—	—	—	—	—	—	—	—	—
maximum snow cover depth at 7 a.m. (cm)	21	16	10	2	0	0	0	0	0	0	12	45	45
mean new snow cover depth (cm)*	5	3	1	0	0	0	0	0	0	0	1	4	14

* homogenised values

Time period: 1981–2010