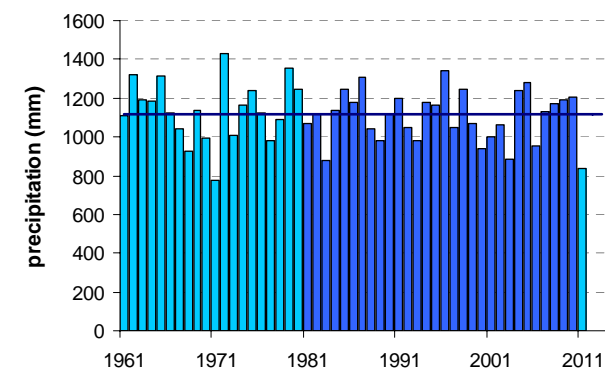
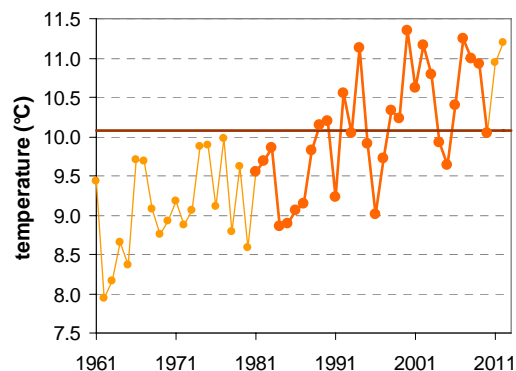


VELENJE

Latitude: 46° 22'

Longitude: 15° 07'

Elevation: 410 m a. s. l.



| | JAN | FEB | MAR | APR | MAY | JUN | JUL | AUG | SEP | OCT | NOV | DEC | YEAR |
|--|-------|-------|-------|------|------|------|------|------|------|------|-------|-------|-------|
| mean monthly temperature (°C)* | 0.0 | 1.6 | 5.6 | 9.9 | 14.9 | 18.1 | 20.0 | 19.3 | 15.0 | 10.5 | 5.1 | 1.1 | 10.1 |
| mean daily maximum for a month (°C)* | 4.5 | 6.7 | 11.1 | 15.6 | 21.0 | 23.9 | 26.2 | 25.8 | 21.2 | 16.0 | 9.7 | 4.8 | 15.5 |
| mean daily minimum for a month (°C)* | -3.2 | -2.3 | 1.0 | 5.0 | 9.7 | 12.8 | 14.6 | 14.4 | 10.7 | 6.7 | 2.0 | -1.7 | 5.8 |
| absolute monthly maximum (°C) | 19.2 | 19.6 | 25.5 | 27.7 | 31.6 | 35.6 | 35.8 | 37.2 | 29.3 | 25.9 | 22.0 | 19.2 | 37.2 |
| absolute monthly minimum (°C) | -20.0 | -18.7 | -14.6 | -4.0 | -1.0 | 3.5 | 6.4 | 5.2 | 0.6 | -5.5 | -12.4 | -14.8 | -20.0 |
| number of days with max. temperature < 0 °C | 6 | 4 | 0 | 0 | 0 | 0 | 0 | 0 | 0 | 0 | 1 | 4 | 15 |
| number of days with min. temperature < 0 °C | 24 | 20 | 11 | 2 | 0 | 0 | 0 | 0 | 0 | 1 | 10 | 21 | 90 |
| number of days with max. temperature > 25 °C | 0 | 0 | 0 | 0 | 5 | 12 | 19 | 18 | 5 | 0 | 0 | 0 | 60 |
| number of days with max. temperature > 30 °C | 0 | 0 | 0 | 0 | 0 | 2 | 4 | 5 | 0 | 0 | 0 | 0 | 11 |
| bright sunshine duration (in hours)* | — | — | — | — | — | — | — | — | — | — | — | — | — |
| mean monthly relative humidity at 7 a.m. (%) | 86 | 85 | 87 | 84 | 83 | 82 | 83 | 87 | 92 | 92 | 90 | 88 | 87 |
| mean monthly relative humidity at 2 p.m. (%) | 64 | 57 | 55 | 53 | 52 | 54 | 53 | 54 | 58 | 62 | 66 | 69 | 58 |
| mean monthly relative humidity at 9 p.m. (%) | 83 | 78 | 75 | 74 | 75 | 78 | 78 | 81 | 87 | 89 | 87 | 86 | 81 |
| mean cloud amount at 7 a.m. (in tenths) | 6.3 | 6.0 | 6.3 | 6.2 | 5.1 | 5.2 | 4.5 | 4.3 | 5.4 | 6.1 | 6.6 | 6.8 | 5.7 |
| mean cloud amount at 2 p.m. (in tenths) | 5.9 | 5.6 | 6.4 | 6.8 | 6.1 | 5.8 | 5.2 | 5.1 | 5.5 | 5.8 | 6.4 | 6.5 | 5.9 |
| mean cloud amount at 9 p.m. (in tenths) | 5.1 | 4.9 | 5.2 | 5.2 | 4.6 | 5.0 | 4.2 | 3.9 | 4.7 | 5.2 | 5.5 | 6.0 | 5.0 |
| number of clear days (cloudiness < 2/10) | 7 | 7 | 6 | 5 | 7 | 6 | 8 | 10 | 8 | 6 | 6 | 5 | 79 |
| number of cloudy days (cloudiness > 8/10) | 11 | 10 | 12 | 11 | 8 | 8 | 6 | 6 | 8 | 11 | 12 | 14 | 114 |
| total amount of precipitation (mm)* | 46 | 50 | 70 | 70 | 89 | 133 | 122 | 124 | 127 | 111 | 94 | 77 | 1114 |
| number of days with precipitation 0.1 mm or more | 7 | 7 | 10 | 12 | 13 | 14 | 12 | 11 | 10 | 10 | 11 | 9 | 127 |
| number of days with precipitation 1 mm or more | 5 | 6 | 8 | 10 | 10 | 11 | 10 | 9 | 9 | 9 | 9 | 8 | 104 |
| number of days with precipitation 10 mm or more | 1 | 1 | 2 | 2 | 3 | 5 | 4 | 4 | 4 | 4 | 3 | 2 | 36 |
| number of days with snow cover at 7 a.m. | 11 | 11 | 4 | 0 | 0 | 0 | 0 | 0 | 0 | 0 | 3 | 8 | 39 |
| mean snow cover depth at 7 a.m. (cm)* | 6 | 6 | 2 | 0 | 0 | 0 | 0 | 0 | 0 | 0 | 1 | 3 | 1.4 |
| maximum snow cover depth at 7 a.m. (cm) | 65 | 62 | 45 | 22 | 12 | 0 | 0 | 0 | 0 | 7 | 40 | 42 | 65 |
| mean new snow cover depth (cm)* | — | — | — | — | — | — | — | — | — | — | — | — | — |

* homogenised values

Time period: 1981–2010