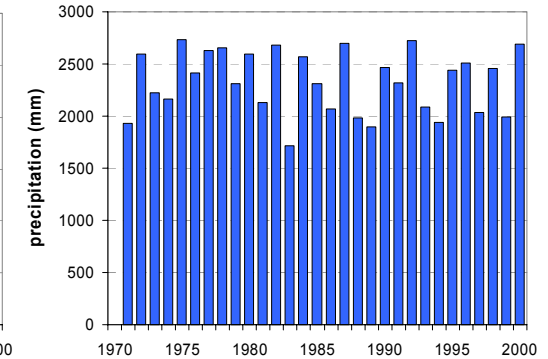
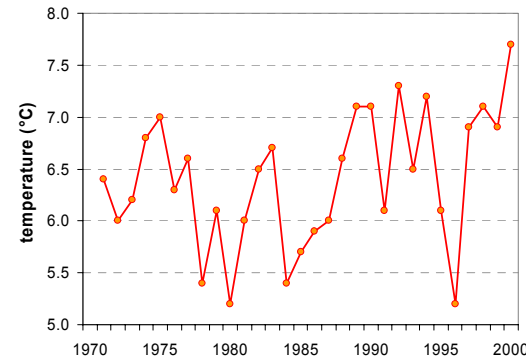
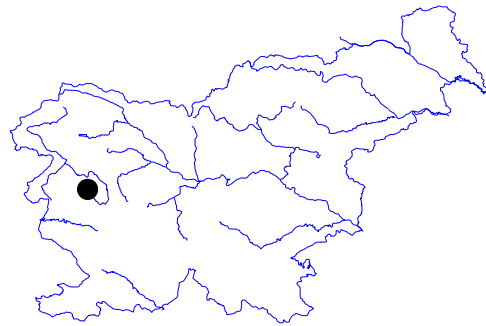


# VOJSKO

Latitude: 46° 2'

Longitude: 13° 54'

Elevation a. s. l.: 1067 m



	JAN	FEB	MAR	APR	MAY	JUN	JUL	AUG	SEP	OCT	NOV	DEC	YEAR
mean monthly temperature (°C)	-2.1	-1.6	1.5	4.9	10.1	13.2	15.7	15.3	11.5	6.9	1.9	-0.9	6.4
mean daily maximum for a month (°C)	0.6	1.7	5.1	8.7	14.1	17.4	20.0	19.8	15.5	10.4	4.7	1.8	10.0
mean daily minimum for a month (°C)	-4.9	-4.5	-1.7	1.7	6.5	9.4	11.6	11.6	8.2	4.1	-0.7	-3.6	3.1
absolute monthly maximum (°C)	11.9	16.7	19.7	21.2	24.8	25.6	30.0	30.0	27.5	22.1	17.2	17.1	30.0
absolute monthly minimum (°C)	-20.5	-18.7	-20.0	-9.0	-4.5	0.5	4.0	1.4	-1.3	-8.3	-14.5	-18.4	-20.5
number of days with max. temperature ≤ 0 °C	12.4	8.9	4.1	0.3	0.0	0.0	0.0	0.0	0.0	0.4	4.8	9.9	40.8
number of days with min. temperature ≤ 0 °C	26.8	23.8	19.2	8.9	0.7	0.0	0.0	0.0	0.1	4.8	16.0	24.4	124.7
number of days with max. temperature ≥ 25 °C	0.0	0.0	0.0	0.0	0.0	0.4	1.9	2.7	0.2	0.0	0.0	0.0	5.2
number of days with max. temperature ≥ 30 °C	0.0	0.0	0.0	0.0	0.0	0.0	0.0	0.0	0.0	0.0	0.0	0.0	0.1
bright sunshine duration (in hours)	95	105	152	154	197	211	261	254	167	136	106	88	1926
mean monthly vapour pressure (hPa)	4.3	4.3	5.2	6.6	9.4	12.0	13.7	13.8	11.2	8.4	5.9	4.8	8.3
mean monthly relative humidity at 7 a.m. (%)	81	78	81	81	82	84	82	86	89	90	86	86	84
mean monthly relative humidity at 2 p.m. (%)	74	70	64	63	64	67	62	64	70	74	76	78	69
mean monthly relative humidity at 9 p.m. (%)	81	80	79	81	82	85	84	85	88	87	85	86	84
mean cloud amount at 7 a.m. (in tenths)	6.6	6.2	6.6	6.7	6.0	5.9	4.8	4.9	6.1	6.8	7.0	6.6	6.2
mean cloud amount at 2 p.m. (in tenths)	6.6	6.0	6.6	7.3	6.9	6.9	5.9	5.5	6.1	6.4	6.7	6.7	6.5
mean cloud amount at 9 p.m. (in tenths)	6.2	5.7	6.0	6.3	6.0	6.0	5.3	4.8	5.2	6.3	6.5	6.3	5.9
number of clear days (cloudiness < 2/10)	4.9	5.5	4.2	2.5	2.6	1.9	3.9	6.1	4.4	4.2	3.9	4.8	49.0
number of cloudy days (cloudiness > 8/10)	13.9	11.0	13.0	13.0	10.3	9.2	6.0	6.2	8.8	13.0	14.2	14.1	132.7
total amount of precipitation (mm)	156	136	162	195	183	202	155	159	207	251	301	224	2332
number of days with precipitation 0.1 mm or more	11.3	10.1	11.8	14.5	15.7	15.9	13.4	12.0	11.6	13.5	12.8	11.9	154.5
number of days with precipitation 1 mm or more	9.8	8.3	9.5	12.0	12.6	13.2	10.8	9.8	9.9	11.3	10.7	9.8	127.7
number of days with precipitation 10 mm or more	4.4	4.2	4.8	5.9	5.4	5.9	4.6	4.8	5.5	6.2	6.2	5.6	63.4
number of days with snow cover at 7 a.m.	25.9	24.6	25.0	15.5	1.0	0.0	0.0	0.0	0.2	1.2	11.4	23.6	128.3
maximum snow cover depth (cm)	185	185	191	185	65	0	0	0	31	14	85	132	191
number of days with thunderstorm and thunder	0.3	0.4	1.2	2.3	6.0	9.3	9.2	7.7	4.6	2.5	1.2	0.6	45.5
number of days with fog	11.1	8.0	7.3	6.1	4.4	3.8	3.1	4.9	7.3	10.4	10.5	10.8	87.7

Time period: 1971–2000