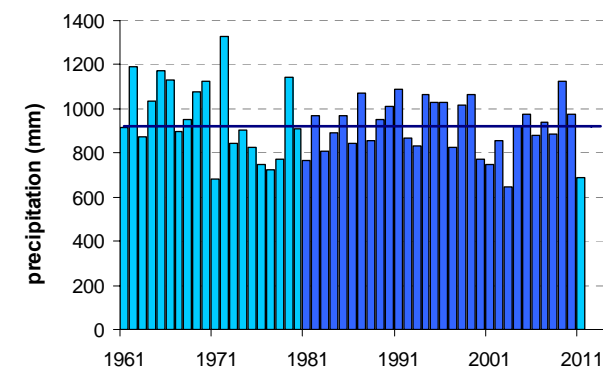
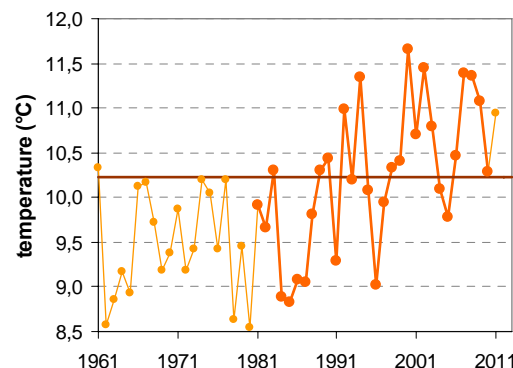
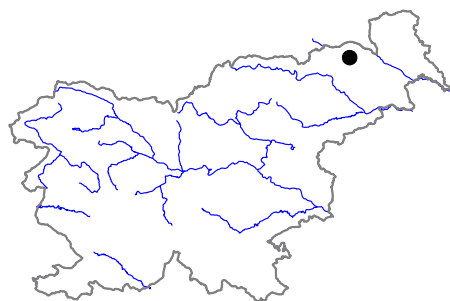


ZGORNJA ŠČAVNICA

Latitude: 46° 39'

Longitude: 15° 51'

Elevation a. s. l.: 358 m



	JAN	FEB	MAR	APR	MAY	JUN	JUL	AUG	SEP	OCT	NOV	DEC	YEAR
mean monthly temperature (°C)*	-0.3	1.4	5.7	10.4	15.3	18.2	20.4	19.9	15.6	10.8	4.8	0.6	10.2
mean daily maximum for a month (°C)*	3.2	5.8	10.8	15.8	21.0	24.0	26.3	25.7	21.0	15.5	8.5	3.7	15.1
mean daily minimum for a month (°C)*	—	—	—	—	—	—	—	—	—	—	—	—	—
absolute monthly maximum (°C)	—	—	—	—	—	—	—	—	—	—	—	—	—
absolute monthly minimum (°C)	—	—	—	—	—	—	—	—	—	—	—	—	—
number of days with max. temperature < 0 °C	—	—	—	—	—	—	—	—	—	—	—	—	—
number of days with min. temperature < 0 °C	—	—	—	—	—	—	—	—	—	—	—	—	—
number of days with max. temperature > 25 °C	—	—	—	—	—	—	—	—	—	—	—	—	—
number of days with max. temperature > 30 °C	—	—	—	—	—	—	—	—	—	—	—	—	—
bright sunshine duration (in hours)*	—	—	—	—	—	—	—	—	—	—	—	—	—
mean monthly relative humidity at 7 a.m. (%)	—	—	—	—	—	—	—	—	—	—	—	—	—
mean monthly relative humidity at 2 p.m. (%)	—	—	—	—	—	—	—	—	—	—	—	—	—
mean monthly relative humidity at 9 p.m. (%)	—	—	—	—	—	—	—	—	—	—	—	—	—
mean cloud amount at 7 a.m. (in tenths)	—	—	—	—	—	—	—	—	—	—	—	—	—
mean cloud amount at 2 p.m. (in tenths)	—	—	—	—	—	—	—	—	—	—	—	—	—
mean cloud amount at 9 p.m. (in tenths)	—	—	—	—	—	—	—	—	—	—	—	—	—
number of clear days (cloudiness < 2/10)	—	—	—	—	—	—	—	—	—	—	—	—	—
number of cloudy days (cloudiness > 8/10)	—	—	—	—	—	—	—	—	—	—	—	—	—
total amount of precipitation (mm)*	36	38	56	58	89	116	98	120	99	81	72	57	923
number of days with precipitation 0.1 mm or more	—	—	—	—	—	—	—	—	—	—	—	—	—
number of days with precipitation 1 mm or more	—	—	—	—	—	—	—	—	—	—	—	—	—
number of days with precipitation 10 mm or more	—	—	—	—	—	—	—	—	—	—	—	—	—
number of days with snow cover at 7 a.m.	—	—	—	—	—	—	—	—	—	—	—	—	—
mean snow cover depth at 7 a.m. (cm)*	6	7	2	0	0	0	0	0	0	0	1	5	1.8
maximum snow cover depth at 7 a.m. (cm)	—	—	—	—	—	—	—	—	—	—	—	—	—
mean new snow cover depth (cm)*	23	29	15	3	0	0	0	0	0	0	12	27	108

* homogenised values

Time period: 1981–2010