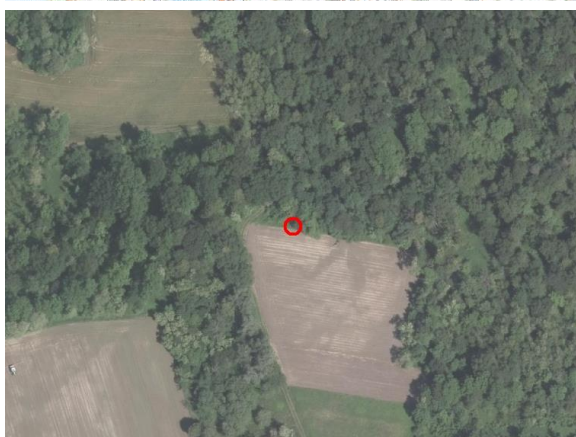
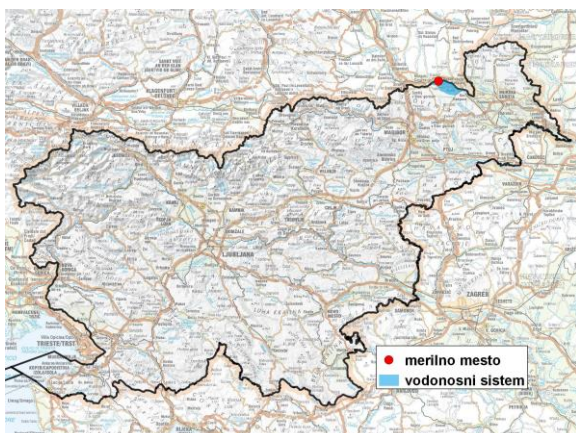


GROUNDWATER MONITORING SITE

Monitoring site code	<b>10005</b>
Monitoring site name	<b>Zgornje Konjišče (S-0176)</b>



**General information about the monitoring site**

<b>Aquifer</b>	Apaško polje
<b>Groundwater body code</b>	4016
<b>Groundwater body name</b>	Murska kotlina
<b>Aquifer system</b>	Apaško polje
<b>Start of observations</b>	1976
<b>End of observations</b>	-
<b>Surface altitude (m a. s. l.)</b>	226.65
<b>Last altitude of the point 0 (m a. s. l.)</b>	227.85
<b>Last altitude of the bottom (m a. s. l.)</b>	220.59
<b>D48/GK: GKX</b>	564242; 175502
<b>D96/TM: e; n</b>	563874; 175986

**Frequency of the measurements**

<b>Groundwater level</b>	continuous
<b>Temperature</b>	continuous
<b>Specific electrical conductivity</b>	-

**Extremes 1976–2017**

<b>Groundwater level – period minimum (m a. s. l.)</b>	219.96
<b>Date of the minimum</b>	11.05.1980
<b>Groundwater level – period maximum (m a. s. l.)</b>	223.33
<b>Date of the maximum</b>	15.09.2014

**Mean values 1976–2017**

	JAN	FEB	MAR	APR	MAY	JUN	JUL	AUG	SEP	OCT	NOV	DEC	PERIOD
m a.s.l.*	221.40	221.39	221.50	221.72	221.93	221.87	221.79	221.68	221.61	221.58	221.52	221.48	221.62
m**	6.45	6.46	6.35	6.13	5.92	5.98	6.06	6.17	6.24	6.27	6.33	6.37	6.23

\* water table in meters above sea level; \*\* depth to water table in meters