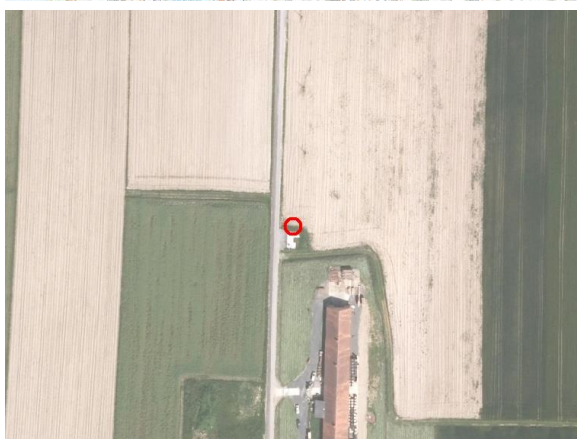
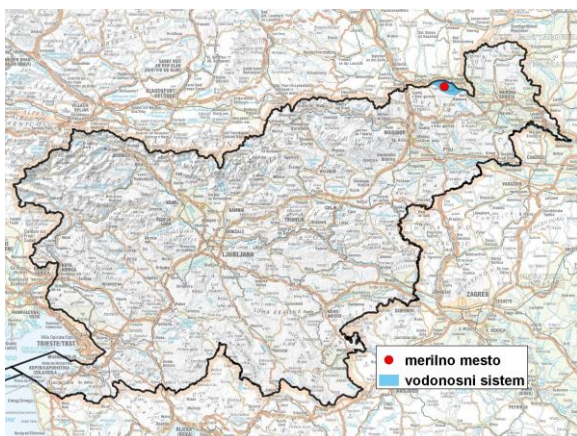


GROUNDWATER MONITORING SITE

Monitoring site code	<b>10022</b>
Monitoring site name	<b>Žepovci (Žep 1/11)</b>



**General information about the monitoring site**

<b>Aquifer</b>	Apaško polje
<b>Groundwater body code</b>	4016
<b>Groundwater body name</b>	Murska kotlina
<b>Aquifer system</b>	Apaško polje
<b>Start of observations</b>	2011
<b>End of observations</b>	-
<b>Surface altitude (m a. s. l.)</b>	222.50
<b>Last altitude of the point 0 (m a. s. l.)</b>	223.69
<b>Last altitude of the bottom (m a. s. l.)</b>	217.69
<b>D48/GK: GKY; GKX</b>	566795; 173014
<b>D96/TM: e; n</b>	566427; 173497

**Frequency of the measurements**

<b>Groundwater level</b>	continuous
<b>Temperature</b>	continuous
<b>Specific electrical conductivity</b>	continuous

**Extremes 2012–2017**

<b>Groundwater level – period minimum (m a. s. l.)</b>	218.05
<b>Date of the minimum</b>	01.09.2012
<b>Groundwater level – period maximum (m a. s. l.)</b>	221.17
<b>Date of the maximum</b>	04.04.2013

**Mean values 2012–2017**

	JAN	FEB	MAR	APR	MAY	JUN	JUL	AUG	SEP	OCT	NOV	DEC	PERIOD
m a.s.l.*	219.02	219.05	219.23	219.30	219.28	219.19	219.11	219.02	218.95	218.91	218.93	218.99	219.08
m**	4.67	4.64	4.46	4.39	4.41	4.50	4.58	4.67	4.74	4.78	4.76	4.70	4.61

\* water table in meters above sea level; \*\* depth to water table in meters