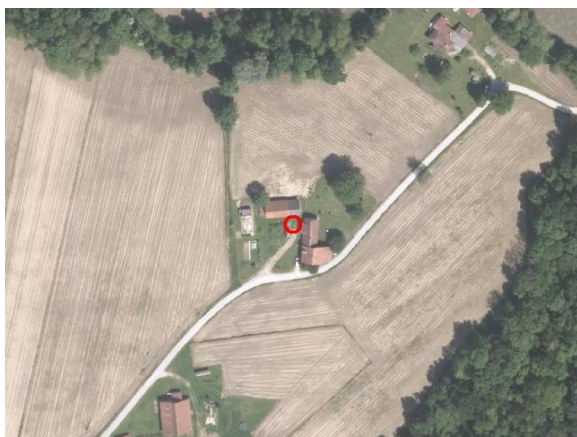
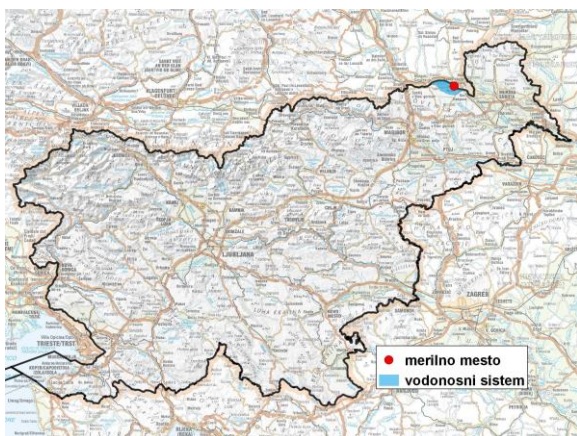


GROUNDWATER MONITORING SITE

| | |
|----------------------|-----------------------|
| Monitoring site code | 10055 |
| Monitoring site name | Segovci (0141) |



General information about the monitoring site

| | |
|--|----------------|
| Aquifer | Apaško polje |
| Groundwater body code | 4016 |
| Groundwater body name | Murska kotlina |
| Aquifer system | Apaško polje |
| Start of observations | 1968 |
| End of observations | - |
| Surface altitude (m a. s. l.) | 215.36 |
| Last altitude of the point 0 (m a. s. l.) | 215.73 |
| Last altitude of the bottom (m a. s. l.) | 211.13 |
| D48/GK: GKX | 571149; 173299 |
| D96/TM: e; n | 570781; 173783 |

Frequency of the measurements

| | |
|---|--------------|
| Groundwater level | 30 per month |
| Temperature | 1 per month |
| Specific electrical conductivity | - |

Extremes 1981–2017

| | |
|--|------------|
| Groundwater level – period minimum (m a. s. l.) | 211.12 |
| Date of the minimum | 30.08.2003 |
| Groundwater level – period maximum (m a. s. l.) | 214.09 |
| Date of the maximum | 24.08.2005 |

Mean values 1981–2017

| | JAN | FEB | MAR | APR | MAY | JUN | JUL | AUG | SEP | OCT | NOV | DEC | PERIOD |
|-----------|--------|--------|--------|--------|--------|--------|--------|--------|--------|--------|--------|--------|--------|
| m a.s.l.* | 211.76 | 211.77 | 211.95 | 212.16 | 212.35 | 212.27 | 212.17 | 212.06 | 212.01 | 211.96 | 211.94 | 211.89 | 212.02 |
| m** | 3.97 | 3.96 | 3.78 | 3.57 | 3.38 | 3.46 | 3.56 | 3.67 | 3.72 | 3.77 | 3.79 | 3.84 | 3.71 |

* water table in meters above sea level; ** depth to water table in meters