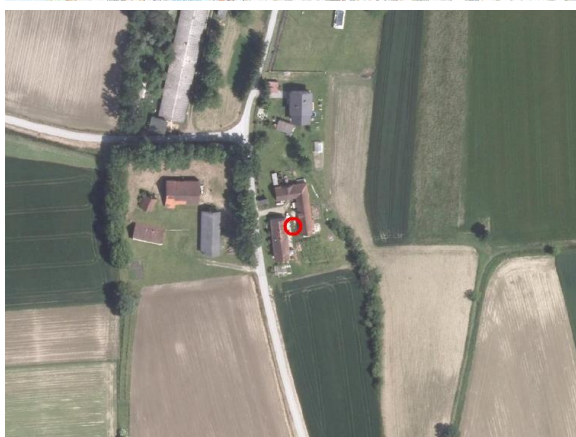
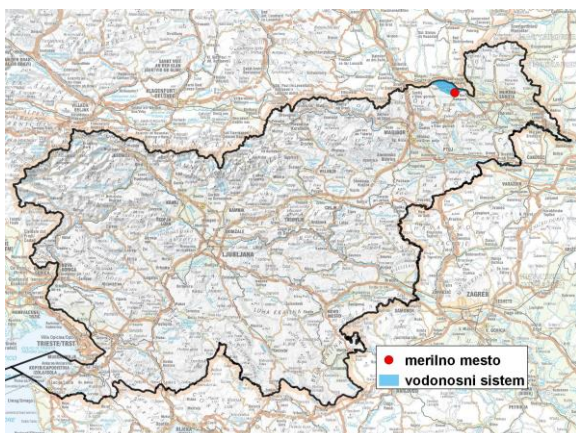


GROUNDWATER MONITORING SITE

Monitoring site code	10080
Monitoring site name	Plitvica (0090)



General information about the monitoring site

Aquifer	Apaško polje
Groundwater body code	4016
Groundwater body name	Murska kotlina
Aquifer system	Apaško polje
Start of observations	1957
End of observations	-
Surface altitude (m a. s. l.)	217.31
Last altitude of the point 0 (m a. s. l.)	217.71
Last altitude of the bottom (m a. s. l.)	212.66
D48/GK: GKY; GKX	571444; 170302
D96/TM: e; n	571076; 170785

Frequency of the measurements

Groundwater level	6 per month
Temperature	1 per month
Specific electrical conductivity	-

Extremes 1981–2017

Groundwater level – period minimum (m a. s. l.)	213.89
Date of the minimum	20.10.1993
Groundwater level – period maximum (m a. s. l.)	217.13
Date of the maximum	22.08.2005

Mean values 1981–2017

	JAN	FEB	MAR	APR	MAY	JUN	JUL	AUG	SEP	OCT	NOV	DEC	PERIOD
m a.s.l.*	215.39	215.51	215.59	215.48	215.23	215.07	215.03	214.97	214.93	215.02	215.20	215.43	215.24
m**	2.32	2.20	2.12	2.23	2.48	2.64	2.68	2.74	2.78	2.69	2.51	2.28	2.47

* water table in meters above sea level; ** depth to water table in meters