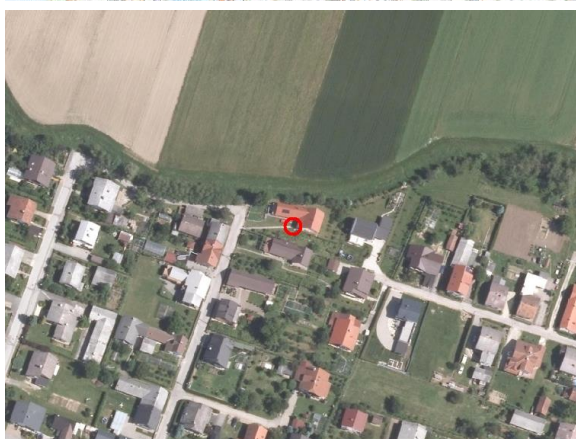
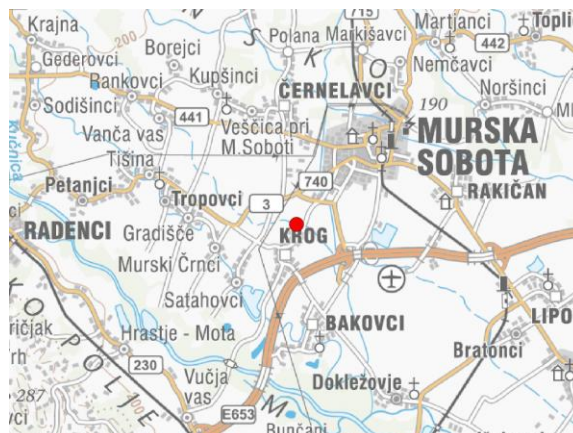
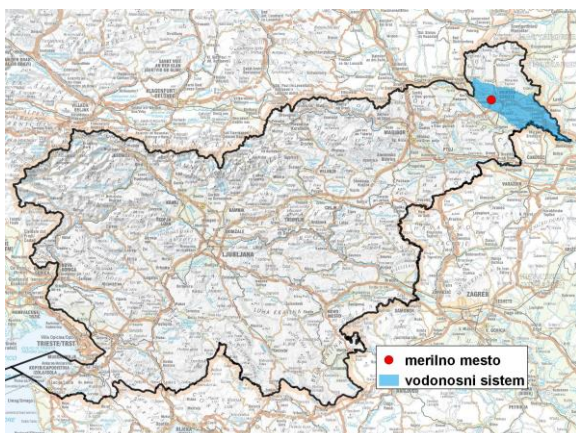


GROUNDWATER MONITORING SITE

Monitoring site code	01025
Monitoring site name	Krog (2932)



General information about the monitoring site

Aquifer	Prekmursko polje
Groundwater body code	4016
Groundwater body name	Murska kotlina
Aquifer system	Dolinsko Ravensko
Start of observations	1990
End of observations	-
Surface altitude (m a. s. l.)	189.54
Last altitude of the point 0 (m a. s. l.)	189.99
Last altitude of the bottom (m a. s. l.)	184.27
D48/GK: GKX	587693; 167152
D96/TM: e; n	587325; 167635

Frequency of the measurements

Groundwater level	6 per month
Temperature	1 per month
Specific electrical conductivity	-

Extremes 1990–2017

Groundwater level – period minimum (m a. s. l.)	184.41
Date of the minimum	31.12.2003
Groundwater level – period maximum (m a. s. l.)	189.13
Date of the maximum	05.03.1995

Mean values 1990–2017

	JAN	FEB	MAR	APR	MAY	JUN	JUL	AUG	SEP	OCT	NOV	DEC	PERIOD
m a.s.l.*	186.26	186.39	186.48	186.43	186.36	186.28	186.18	186.09	186.07	186.04	186.09	186.22	186.24
m**	3.73	3.60	3.51	3.56	3.63	3.71	3.81	3.90	3.92	3.95	3.90	3.77	3.75

* water table in meters above sea level; ** depth to water table in meters