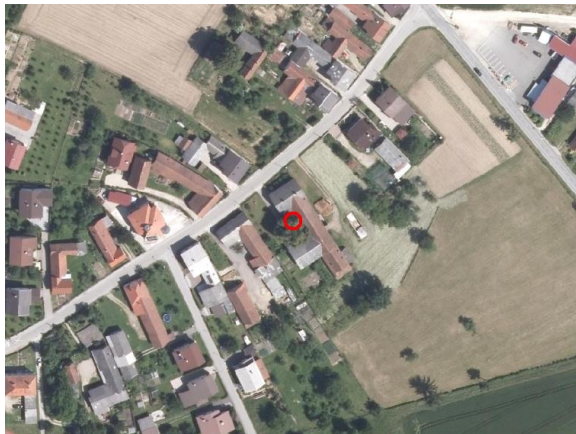
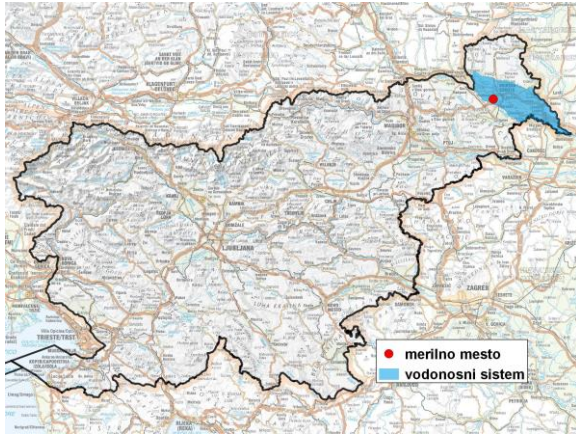


GROUNDWATER MONITORING SITE

Monitoring site code	<b>01035</b>
Monitoring site name	<b>Bakovci (2630)</b>



**General information about the monitoring site**

<b>Aquifer</b>	Prekmursko polje
<b>Groundwater body code</b>	4016
<b>Groundwater body name</b>	Murska kotlina
<b>Aquifer system</b>	Dolinsko Ravensko
<b>Start of observations</b>	1981
<b>End of observations</b>	2016
<b>Surface altitude (m a. s. l.)</b>	187.54
<b>Last altitude of the point 0 (m a. s. l.)</b>	188.09
<b>Last altitude of the bottom (m a. s. l.)</b>	182.44
<b>D48/GK: GKY; GKX</b>	588576; 164425
<b>D96/TM: e; n</b>	588208; 164908

**Frequency of the measurements**

<b>Groundwater level</b>	6 per month
<b>Temperature</b>	1 per month
<b>Specific electrical conductivity</b>	-

**Extremes 1981–2016**

<b>Groundwater level – period minimum (m a. s. l.)</b>	182.74
<b>Date of the minimum</b>	30.12.2003
<b>Groundwater level – period maximum (m a. s. l.)</b>	185.59
<b>Date of the maximum</b>	15.09.2014

**Mean values 1981–2016**

	JAN	FEB	MAR	APR	MAY	JUN	JUL	AUG	SEP	OCT	NOV	DEC	PERIOD
m a.s.l.*	183.82	183.82	183.94	183.96	183.93	183.91	183.84	183.77	183.74	183.73	183.76	183.80	183.84
m**	4.27	4.27	4.15	4.13	4.16	4.18	4.25	4.32	4.35	4.36	4.33	4.29	4.26

\* water table in meters above sea level; \*\* depth to water table in meters