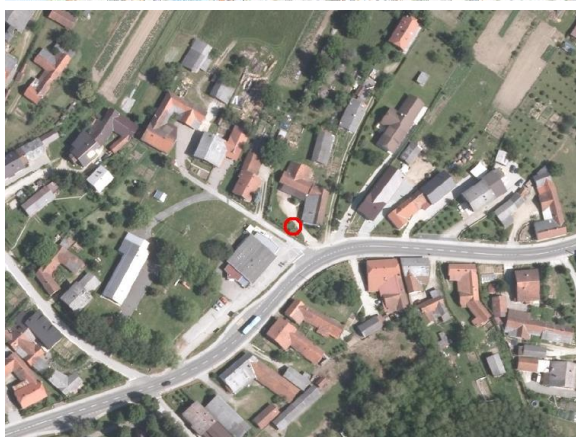
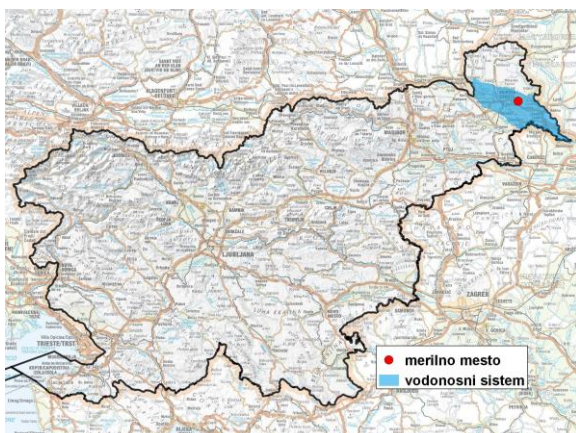


GROUNDWATER MONITORING SITE

Monitoring site code	<b>01045</b>
Monitoring site name	<b>Renkovci (0850)</b>



**General information about the monitoring site**

<b>Aquifer</b>	Prekmursko polje
<b>Groundwater body code</b>	4016
<b>Groundwater body name</b>	Murska kotlina
<b>Aquifer system</b>	Dolinsko Ravensko
<b>Start of observations</b>	1952
<b>End of observations</b>	-
<b>Surface altitude (m a. s. l.)</b>	174.28
<b>Last altitude of the point 0 (m a. s. l.)</b>	175.14
<b>Last altitude of the bottom (m a. s. l.)</b>	171.57
<b>D48/GK: GKX</b>	599619; 166557
<b>D96/TM: e; n</b>	599251; 167039

**Frequency of the measurements**

<b>Groundwater level</b>	continuous
<b>Temperature</b>	continuous
<b>Specific electrical conductivity</b>	-

**Extremes 1953–2017**

<b>Groundwater level – period minimum (m a. s. l.)</b>	171.58
<b>Date of the minimum</b>	29.07.2003
<b>Groundwater level – period maximum (m a. s. l.)</b>	174.16
<b>Date of the maximum</b>	13.09.2014

**Mean values 1953–2017**

	JAN	FEB	MAR	APR	MAY	JUN	JUL	AUG	SEP	OCT	NOV	DEC	PERIOD
m a.s.l.*	172.58	172.69	172.79	172.77	172.64	172.51	172.39	172.32	172.28	172.30	172.41	172.53	172.52
m**	2.56	2.45	2.35	2.37	2.50	2.63	2.75	2.82	2.86	2.84	2.73	2.61	2.62

\* water table in meters above sea level; \*\* depth to water table in meters