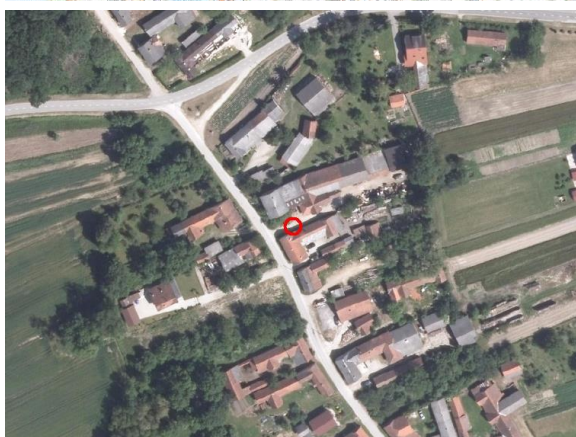
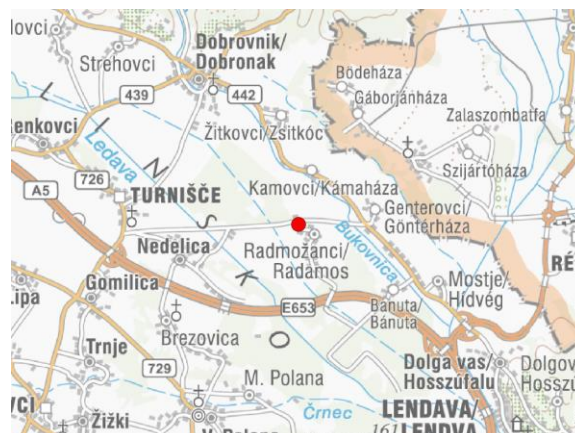
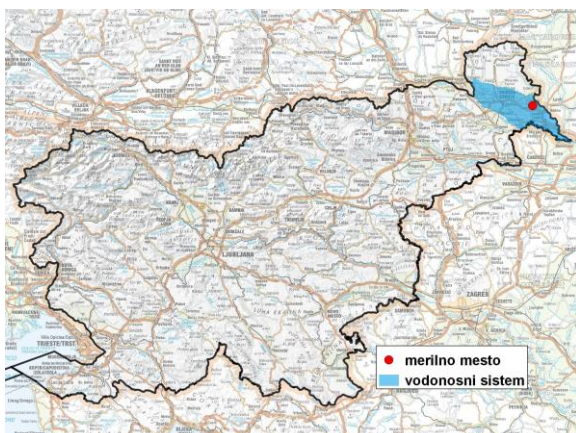


GROUNDWATER MONITORING SITE

Monitoring site code	<b>01075</b>
Monitoring site name	<b>Radmožanci (0411)</b>



**General information about the monitoring site**

<b>Aquifer</b>	Prekmursko polje
<b>Groundwater body code</b>	4016
<b>Groundwater body name</b>	Murska kotlina
<b>Aquifer system</b>	Dolinsko Ravensko
<b>Start of observations</b>	1979
<b>End of observations</b>	-
<b>Surface altitude (m a. s. l.)</b>	166.73
<b>Last altitude of the point 0 (m a. s. l.)</b>	166.78
<b>Last altitude of the bottom (m a. s. l.)</b>	163.15
<b>D48/GK: GKY; GKX</b>	606044; 164573
<b>D96/TM: e; n</b>	605675; 165055

**Frequency of the measurements**

<b>Groundwater level</b>	6 per month
<b>Temperature</b>	1 per month
<b>Specific electrical conductivity</b>	-

**Extremes 1979–2017**

<b>Groundwater level – period minimum (m a. s. l.)</b>	163.15
<b>Date of the minimum</b>	15.06.1997
<b>Groundwater level – period maximum (m a. s. l.)</b>	165.29
<b>Date of the maximum</b>	15.09.2014

**Mean values 1979–2017**

	JAN	FEB	MAR	APR	MAY	JUN	JUL	AUG	SEP	OCT	NOV	DEC	PERIOD
m a.s.l.*	164.18	164.22	164.25	164.18	164.03	163.88	163.78	163.74	163.79	163.89	164.03	164.17	164.01
m**	2.60	2.56	2.53	2.60	2.75	2.90	3.00	3.04	2.99	2.89	2.75	2.61	2.77

\* water table in meters above sea level; \*\* depth to water table in meters