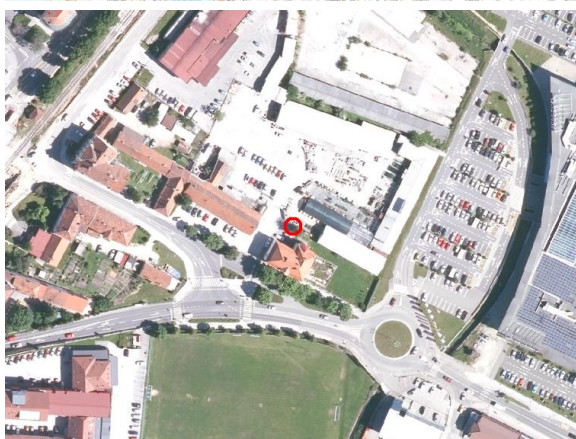
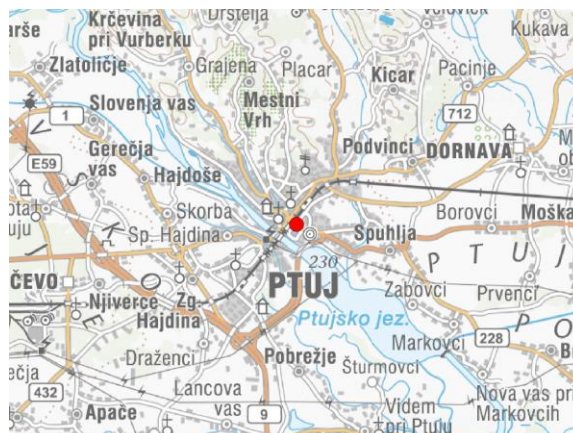
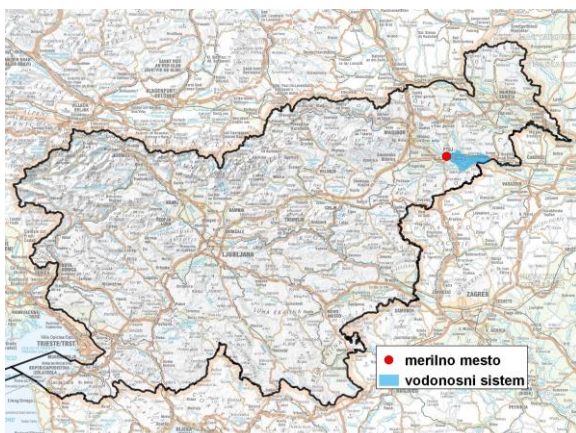


GROUNDWATER MONITORING SITE

| | |
|----------------------|--------------------|
| Monitoring site code | 15005 |
| Monitoring site name | Ptuj (0721) |



General information about the monitoring site

| | |
|---|-----------------|
| Aquifer | Ptujsko polje |
| Groundwater body code | 3012 |
| Groundwater body name | Dravska kotlina |
| Aquifer system | Ptujsko polje |
| Start of observations | 1982 |
| End of observations | - |
| Surface altitude (m a. s. l.) | 221.61 |
| Last altitude of the point 0 (m a. s. l.) | 221.75 |
| Last altitude of the bottom (m a. s. l.) | 216.45 |
| D48/GK: GKY; GKX | 567766; 141989 |
| D96/TM: e; n | 567397; 142473 |

Frequency of the measurements

| | |
|----------------------------------|-------------|
| Groundwater level | 6 per month |
| Temperature | 1 per month |
| Specific electrical conductivity | - |

Extremes 1982–2017

| | |
|---|------------|
| Groundwater level – period minimum (m a. s. l.) | 217.46 |
| Date of the minimum | 05.12.1996 |
| Groundwater level – period maximum (m a. s. l.) | 219.02 |
| Date of the maximum | 25.11.1991 |

Mean values 1982–2017

| | JAN | FEB | MAR | APR | MAY | JUN | JUL | AUG | SEP | OCT | NOV | DEC | PERIOD |
|-----------|--------|--------|--------|--------|--------|--------|--------|--------|--------|--------|--------|--------|--------|
| m a.s.l.* | 218.21 | 218.21 | 218.23 | 218.24 | 218.23 | 218.24 | 218.23 | 218.21 | 218.21 | 218.22 | 218.23 | 218.23 | 218.22 |
| m** | 3.54 | 3.54 | 3.52 | 3.51 | 3.52 | 3.51 | 3.52 | 3.54 | 3.54 | 3.53 | 3.52 | 3.52 | 3.53 |

* water table in meters above sea level; ** depth to water table in meters