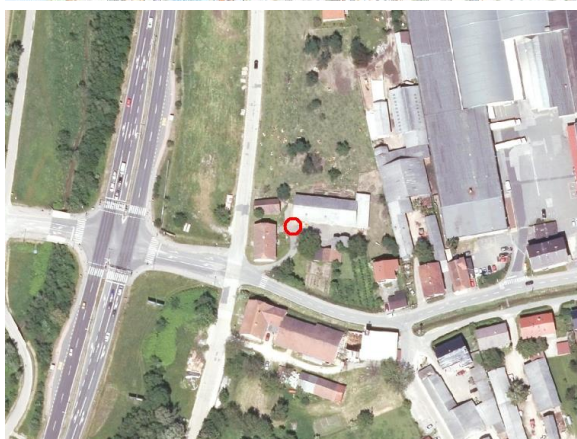
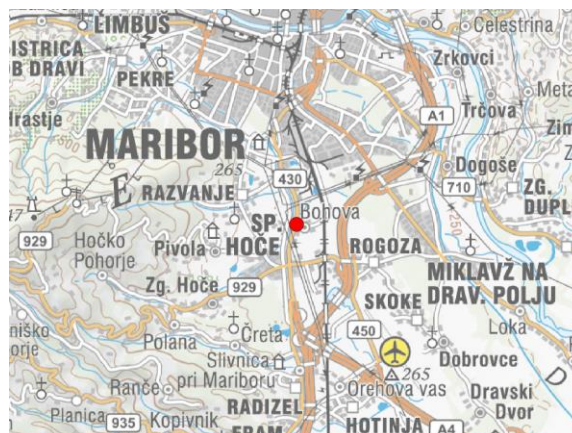
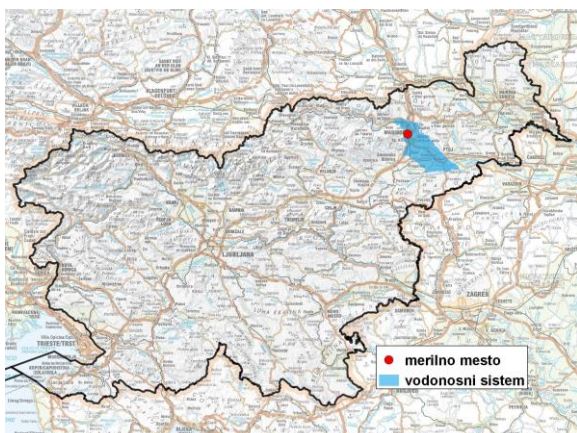


GROUNDWATER MONITORING SITE

Monitoring site code	20020
Monitoring site name	Bohova (0890)



General information about the monitoring site

Aquifer	Dravsko polje
Groundwater body code	3012
Groundwater body name	Dravska kotlina
Aquifer system	Dravsko polje
Start of observations	1990
End of observations	-
Surface altitude (m a. s. l.)	272.46
Last altitude of the point 0 (m a. s. l.)	272.91
Last altitude of the bottom (m a. s. l.)	255.96
D48/GK: GKX	550523; 151899
D96/TM: e; n	550155; 152384

Frequency of the measurements

Groundwater level	continuous
Temperature	continuous
Specific electrical conductivity	-

Extremes 1956–2017

Groundwater level – period minimum (m a. s. l.)	256.13
Date of the minimum	22.10.1993
Groundwater level – period maximum (m a. s. l.)	262.03
Date of the maximum	04.11.1990

Mean values 1956–2017

	JAN	FEB	MAR	APR	MAY	JUN	JUL	AUG	SEP	OCT	NOV	DEC	PERIOD
m a.s.l.*	258.65	258.49	258.53	258.65	258.45	258.18	258.00	257.83	257.80	257.90	258.20	258.59	258.27
m**	14.26	14.42	14.38	14.26	14.46	14.73	14.91	15.08	15.11	15.01	14.71	14.32	14.64

* water table in meters above sea level; ** depth to water table in meters