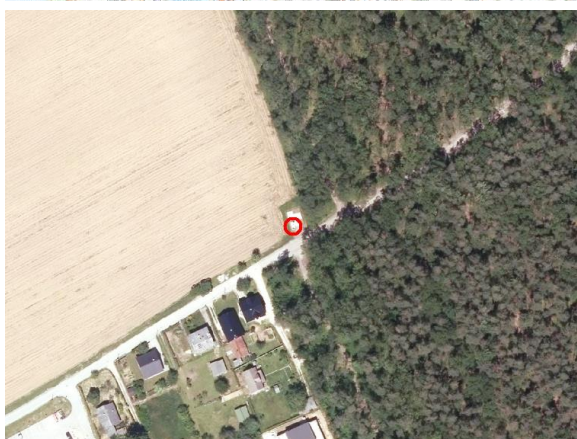
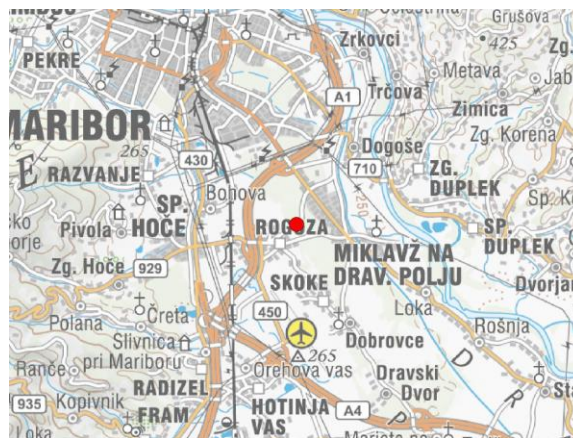
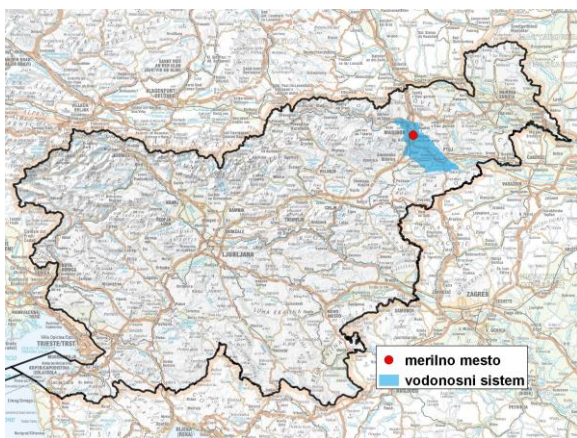


GROUNDWATER MONITORING SITE

Monitoring site code	<b>20022</b>
Monitoring site name	<b>Rogoza ( Rog 1/11)</b>



**General information about the monitoring site**

<b>Aquifer</b>	Dravsko polje
<b>Groundwater body code</b>	3012
<b>Groundwater body name</b>	Dravska kotlina
<b>Aquifer system</b>	Dravsko polje
<b>Start of observations</b>	2011
<b>End of observations</b>	-
<b>Surface altitude (m a. s. l.)</b>	267.60
<b>Last altitude of the point 0 (m a. s. l.)</b>	267.94
<b>Last altitude of the bottom (m a. s. l.)</b>	239.44
<b>D48/GK: GKY; GKX</b>	552972; 151409
<b>D96/TM: e; n</b>	552603; 151894

**Frequency of the measurements**

<b>Groundwater level</b>	continuous
<b>Temperature</b>	continuous
<b>Specific electrical conductivity</b>	continuous

**Extremes 2012–2017**

<b>Groundwater level – period minimum (m a. s. l.)</b>	250.41
<b>Date of the minimum</b>	04.09.2012
<b>Groundwater level – period maximum (m a. s. l.)</b>	254.12
<b>Date of the maximum</b>	22.04.2013

**Mean values 2012–2017**

	JAN	FEB	MAR	APR	MAY	JUN	JUL	AUG	SEP	OCT	NOV	DEC	PERIOD
m a.s.l.*	252.58	252.52	252.58	252.87	253.04	252.93	252.71	252.51	252.30	252.21	252.26	252.41	252.58
m**	15.36	15.42	15.36	15.07	14.90	15.01	15.23	15.43	15.64	15.73	15.68	15.53	15.36

\* water table in meters above sea level; \*\* depth to water table in meters