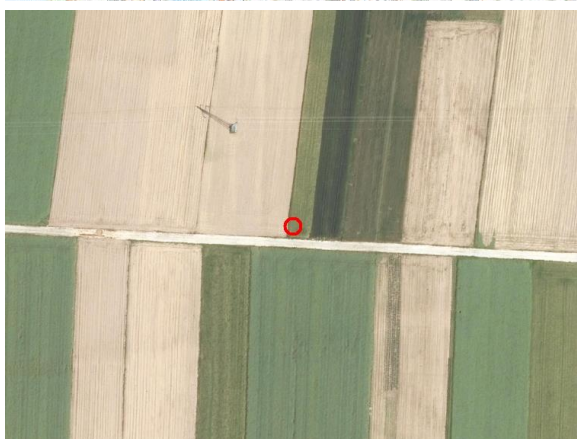
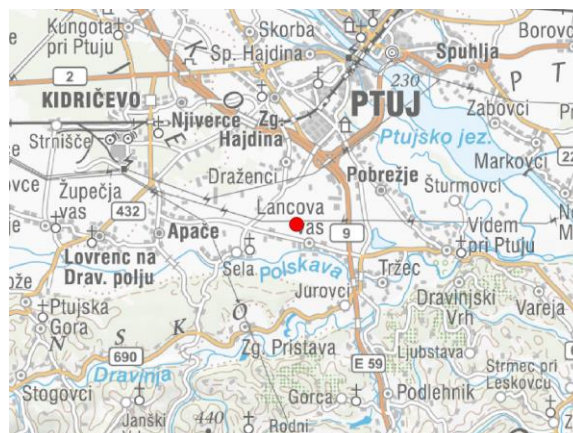
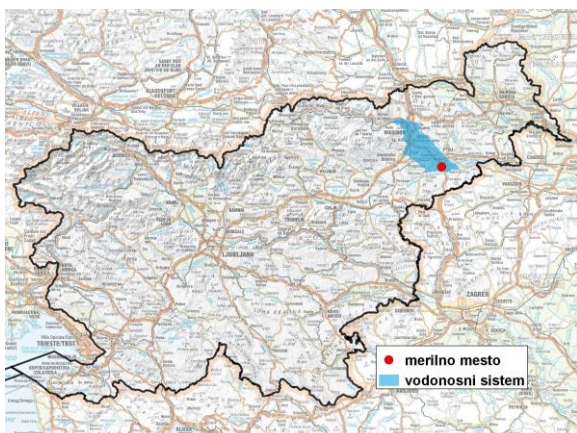


GROUNDWATER MONITORING SITE

Monitoring site code	20097
Monitoring site name	Draženci (Dra - 2/14)



General information about the monitoring site

Aquifer	Dravsko polje
Groundwater body code	3012
Groundwater body name	Dravska kotlina
Aquifer system	Dravsko polje
Start of observations	2015
End of observations	-
Surface altitude (m a. s. l.)	228.90
Last altitude of the point 0 (m a. s. l.)	229.41
Last altitude of the bottom (m a. s. l.)	213.41
D48/GK: GKY; GKX	565616; 137250
D96/TM: e; n	565247; 137734

Frequency of the measurements

Groundwater level	continuous
Temperature	continuous
Specific electrical conductivity	continuous

Extremes 2015–2017

Groundwater level – period minimum (m a. s. l.)	223.75
Date of the minimum	12.09.2017
Groundwater level – period maximum (m a. s. l.)	225.61
Date of the maximum	02.03.2015

Mean values 2015–2017

	JAN	FEB	MAR	APR	MAY	JUN	JUL	AUG	SEP	OCT	NOV	DEC	PERIOD
m a.s.l.*	224.41	224.43	224.50	224.52	224.46	224.39	224.32	224.24	224.21	224.25	224.31	224.38	224.37
m**	5.00	4.98	4.91	4.89	4.95	5.02	5.09	5.17	5.20	5.16	5.10	5.03	5.04

* water table in meters above sea level; ** depth to water table in meters