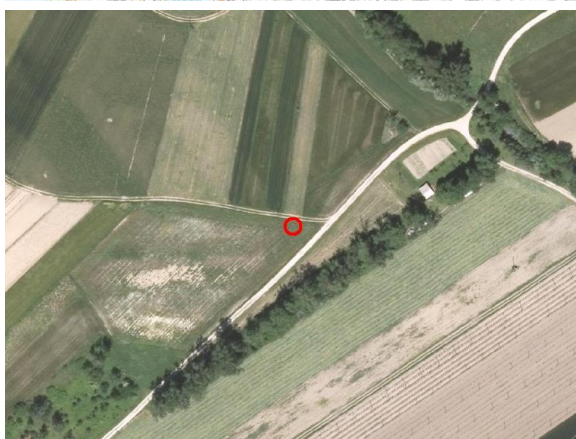
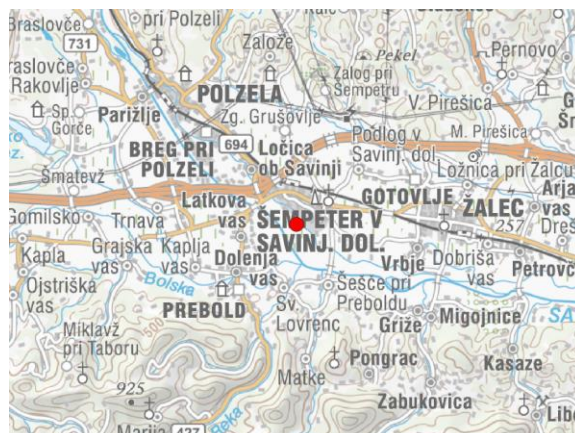
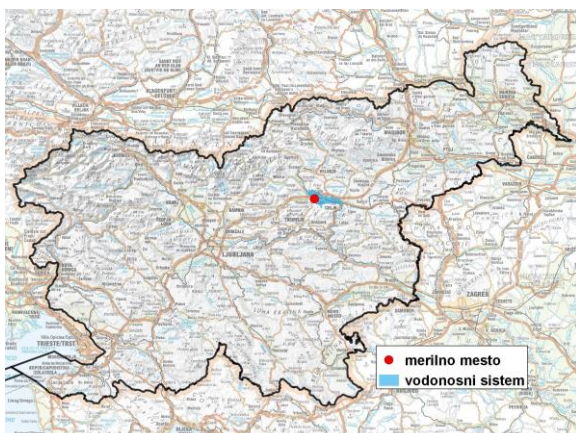


GROUNDWATER MONITORING SITE

Monitoring site code	30015
Monitoring site name	Šempeter (Vč-5172)



General information about the monitoring site

Aquifer	Spodnja Savinjska dolina
Groundwater body code	1002
Groundwater body name	Savinjska kotlina
Aquifer system	Spodnjesavinjsko polje
Start of observations	1972
End of observations	-
Surface altitude (m a. s. l.)	267.04
Last altitude of the point 0 (m a. s. l.)	267.54
Last altitude of the bottom (m a. s. l.)	263.74
D48/GK: GKY; GKX	509060; 123033
D96/TM: e; n	508691; 123519

Frequency of the measurements

Groundwater level	continuous
Temperature	1 per month
Specific electrical conductivity	-

Extremes 1973–2017

Groundwater level – period minimum (m a. s. l.)	263.74
Date of the minimum	26.01.1989
Groundwater level – period maximum (m a. s. l.)	267.06
Date of the maximum	05.11.2012

Mean values 1973–2017

	JAN	FEB	MAR	APR	MAY	JUN	JUL	AUG	SEP	OCT	NOV	DEC	PERIOD
m a.s.l.*	264.29	264.26	264.31	264.37	264.32	264.29	264.31	264.24	264.29	264.41	264.45	264.38	264.33
m**	3.25	3.28	3.23	3.17	3.22	3.25	3.23	3.30	3.25	3.13	3.09	3.16	3.21

* water table in meters above sea level; ** depth to water table in meters