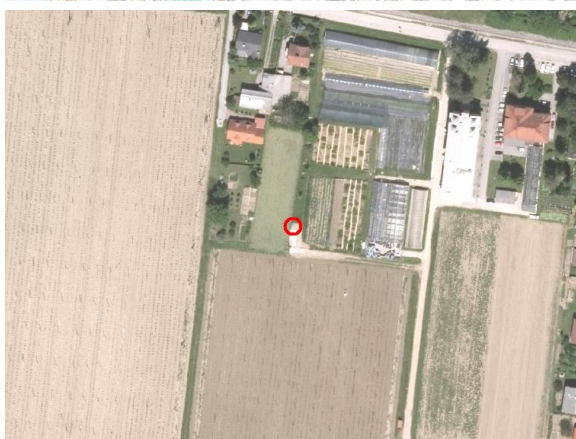
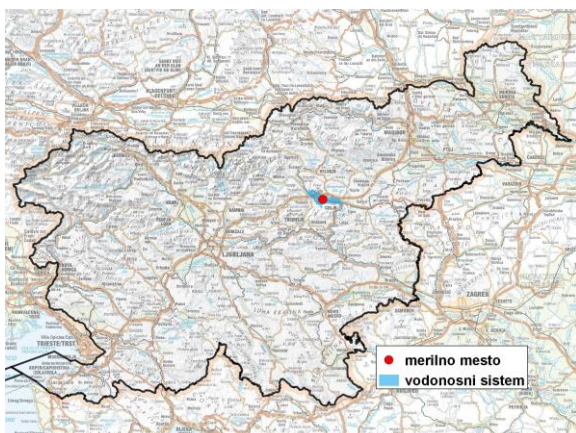


GROUNDWATER MONITORING SITE

Monitoring site code	<b>30032</b>
Monitoring site name	<b>Žalec (Žal - 1/14)</b>



**General information about the monitoring site**

<b>Aquifer</b>	Spodnja Savinjska dolina
<b>Groundwater body code</b>	1002
<b>Groundwater body name</b>	Savinjska kotlina
<b>Aquifer system</b>	Spodnjesavinjsko polje
<b>Start of observations</b>	2014
<b>End of observations</b>	-
<b>Surface altitude (m a. s. l.)</b>	254.20
<b>Last altitude of the point 0 (m a. s. l.)</b>	254.61
<b>Last altitude of the bottom (m a. s. l.)</b>	237.61
<b>D48/GK: GKY; GKX</b>	512748; 122792
<b>D96/TM: e; n</b>	512378; 123278

**Frequency of the measurements**

<b>Groundwater level</b>	continuous
<b>Temperature</b>	continuous
<b>Specific electrical conductivity</b>	continuous

**Extremes 2014–2017**

<b>Groundwater level – period minimum (m a. s. l.)</b>	252.21
<b>Date of the minimum</b>	31.08.2017
<b>Groundwater level – period maximum (m a. s. l.)</b>	253.81
<b>Date of the maximum</b>	13.09.2014

**Mean values 2014–2017**

	JAN	FEB	MAR	APR	MAY	JUN	JUL	AUG	SEP	OCT	NOV	DEC	PERIOD
m a.s.l.*	252.88	252.84	252.85	252.86	252.82	252.82	252.83	252.75	252.77	252.88	252.93	252.93	252.85
m**	1.73	1.77	1.76	1.75	1.79	1.79	1.78	1.86	1.84	1.73	1.68	1.68	1.76

\* water table in meters above sea level; \*\* depth to water table in meters