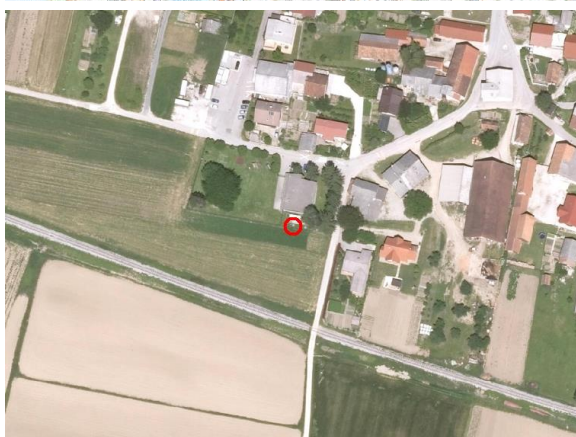
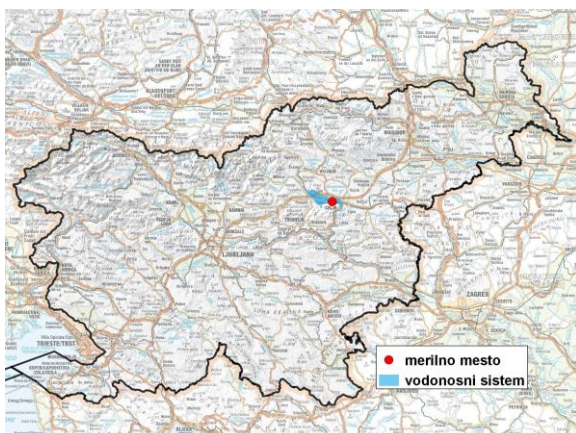


GROUNDWATER MONITORING SITE

Monitoring site code	30051
Monitoring site name	Levec (Le-1/01)



General information about the monitoring site

Aquifer	Spodnja Savinjska dolina
Groundwater body code	1002
Groundwater body name	Savinjska kotlina
Aquifer system	Spodnjesavinjsko polje
Start of observations	2003
End of observations	-
Surface altitude (m a. s. l.)	244.52
Last altitude of the point 0 (m a. s. l.)	244.72
Last altitude of the bottom (m a. s. l.)	0.00
D48/GK: GKY; GKX	517024; 121765
D96/TM: e; n	516654; 122250

Frequency of the measurements

Groundwater level	continuous
Temperature	continuous
Specific electrical conductivity	continuous

Extremes 2006–2017

Groundwater level – period minimum (m a. s. l.)	241.51
Date of the minimum	31.08.2017
Groundwater level – period maximum (m a. s. l.)	244.19
Date of the maximum	19.09.2010

Mean values 2006–2017

	JAN	FEB	MAR	APR	MAY	JUN	JUL	AUG	SEP	OCT	NOV	DEC	PERIOD
m a.s.l.*	242.37	242.35	242.42	242.36	242.25	242.25	242.24	242.13	242.24	242.42	242.50	242.49	242.33
m**	2.35	2.37	2.30	2.36	2.47	2.47	2.48	2.59	2.48	2.30	2.22	2.23	2.38

* water table in meters above sea level; ** depth to water table in meters