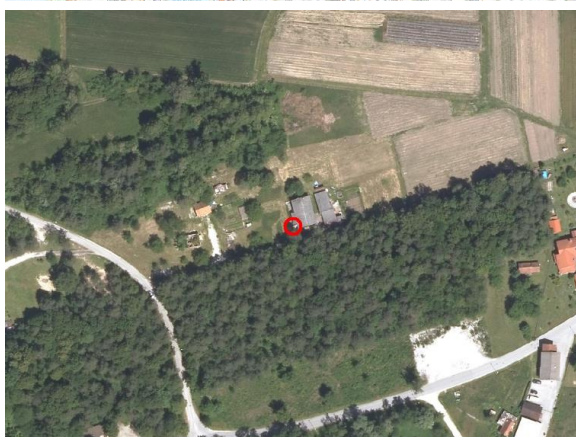
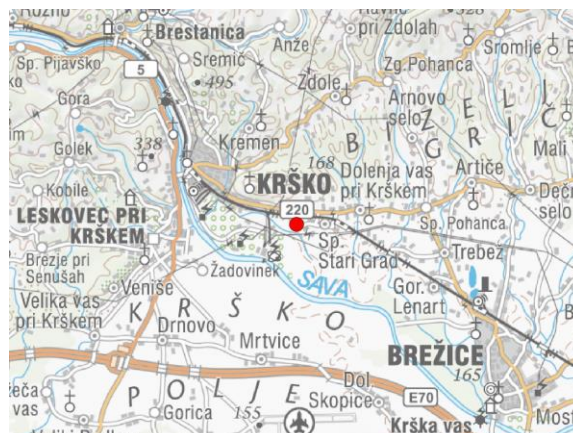
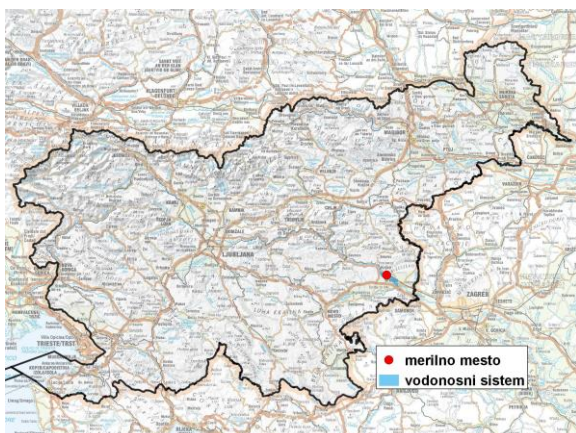


GROUNDWATER MONITORING SITE

Monitoring site code	40015
Monitoring site name	Spodnji Stari Grad (0111)



General information about the monitoring site

Aquifer	Brežiško polje
Groundwater body code	1003
Groundwater body name	Krška kotlina
Aquifer system	Brežiško polje
Start of observations	1971
End of observations	-
Surface altitude (m a. s. l.)	153.26
Last altitude of the point 0 (m a. s. l.)	153.81
Last altitude of the bottom (m a. s. l.)	148.83
D48/GK: GKY; GKX	541173; 89089
D96/TM: e; n	540803; 89574

Frequency of the measurements

Groundwater level	continuous
Temperature	1 per month/continuous
Specific electrical conductivity	-

Extremes 1981–2017

Groundwater level – period minimum (m a. s. l.)	149.05
Date of the minimum	10.07.1983
Groundwater level – period maximum (m a. s. l.)	151.02
Date of the maximum	10.11.1998

Mean values 1981–2017

	JAN	FEB	MAR	APR	MAY	JUN	JUL	AUG	SEP	OCT	NOV	DEC	PERIOD
m a.s.l.*	149.72	149.73	149.77	149.70	149.59	149.51	149.47	149.44	149.50	149.63	149.73	149.81	149.63
m**	4.09	4.08	4.04	4.11	4.22	4.30	4.34	4.37	4.31	4.18	4.08	4.00	4.18

* water table in meters above sea level; ** depth to water table in meters