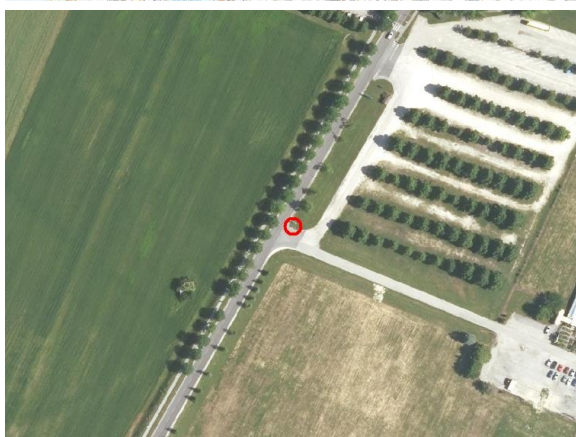
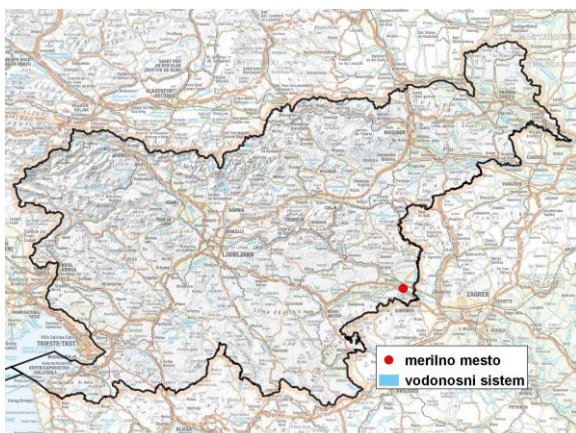


GROUNDWATER MONITORING SITE

Monitoring site code	45030
Monitoring site name	Čatež (M-32)



General information about the monitoring site

Aquifer	Čateško polje
Groundwater body code	1003
Groundwater body name	Krška kotlina
Aquifer system	Čateško polje
Start of observations	1990
End of observations	-
Surface altitude (m a. s. l.)	142.03
Last altitude of the point 0 (m a. s. l.)	143.11
Last altitude of the bottom (m a. s. l.)	132.01
D48/GK: GKX	548528; 83139
D96/TM: e; n	548157; 83623

Frequency of the measurements

Groundwater level	continuous
Temperature	1 per month/continuous
Specific electrical conductivity	-

Extremes 1990–2017

Groundwater level – period minimum (m a. s. l.)	136.65
Date of the minimum	01.09.2017
Groundwater level – period maximum (m a. s. l.)	142.03
Date of the maximum	20.09.2010

Mean values 1990–2017

	JAN	FEB	MAR	APR	MAY	JUN	JUL	AUG	SEP	OCT	NOV	DEC	PERIOD
m a.s.l.*	138.10	137.98	138.13	138.25	138.03	137.82	137.66	137.46	137.76	138.10	138.49	138.41	138.02
m**	5.01	5.13	4.98	4.86	5.08	5.29	5.45	5.65	5.35	5.01	4.62	4.70	5.09

* water table in meters above sea level; ** depth to water table in meters