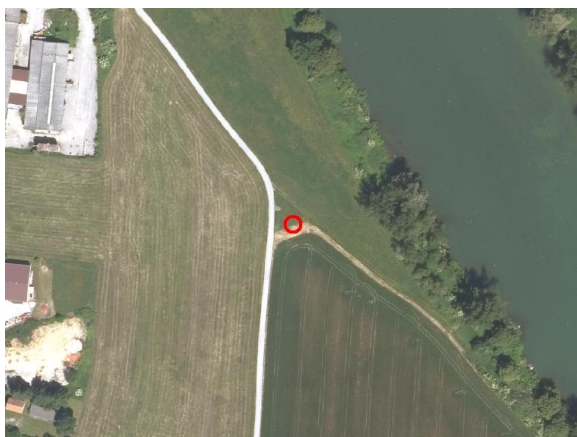
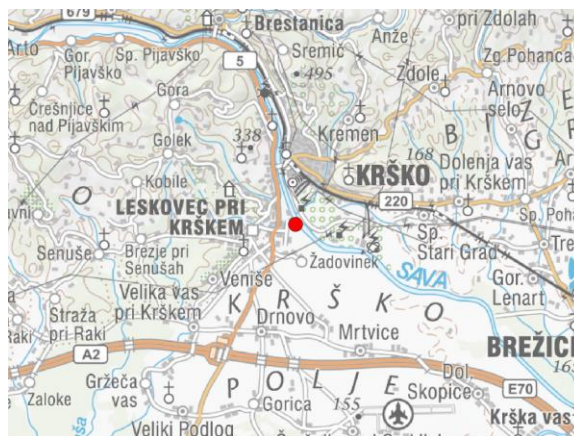
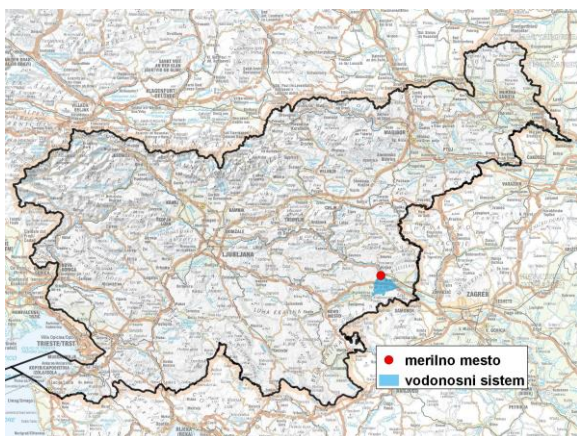


GROUNDWATER MONITORING SITE

Monitoring site code	<b>50005</b>
Monitoring site name	<b>Žadovinek (NE-0177)</b>



**General information about the monitoring site**

<b>Aquifer</b>	Krško polje
<b>Groundwater body code</b>	1003
<b>Groundwater body name</b>	Krška kotlina
<b>Aquifer system</b>	Krško polje
<b>Start of observations</b>	1978
<b>End of observations</b>	2017
<b>Surface altitude (m a. s. l.)</b>	157.49
<b>Last altitude of the point 0 (m a. s. l.)</b>	157.94
<b>Last altitude of the bottom (m a. s. l.)</b>	146.07
<b>D48/GK: GKY; GKX</b>	538568; 88862
<b>D96/TM: e; n</b>	538197; 89347

**Frequency of the measurements**

<b>Groundwater level</b>	4 per month
<b>Temperature</b>	4 per month
<b>Specific electrical conductivity</b>	-

**Extremes 1981–2017**

<b>Groundwater level – period minimum (m a. s. l.)</b>	148.84
<b>Date of the minimum</b>	08.03.1982
<b>Groundwater level – period maximum (m a. s. l.)</b>	153.45
<b>Date of the maximum</b>	05.11.1990

**Mean values 1981–2017**

	JAN	FEB	MAR	APR	MAY	JUN	JUL	AUG	SEP	OCT	NOV	DEC	PERIOD
m a.s.l.*	150.27	150.22	150.32	150.44	150.27	150.25	150.13	150.01	150.09	150.32	150.52	150.40	150.27
m**	7.67	7.72	7.62	7.50	7.67	7.69	7.81	7.93	7.85	7.62	7.42	7.54	7.67

\* water table in meters above sea level; \*\* depth to water table in meters