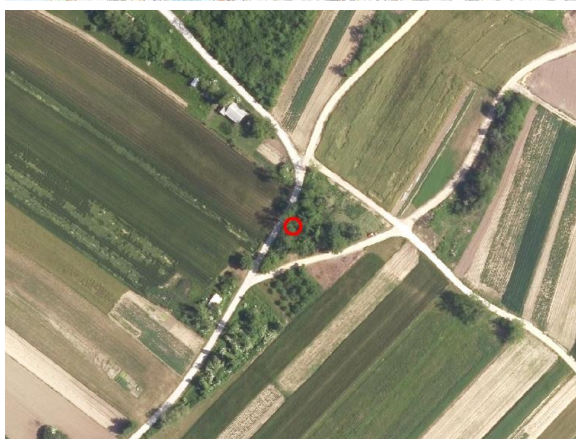
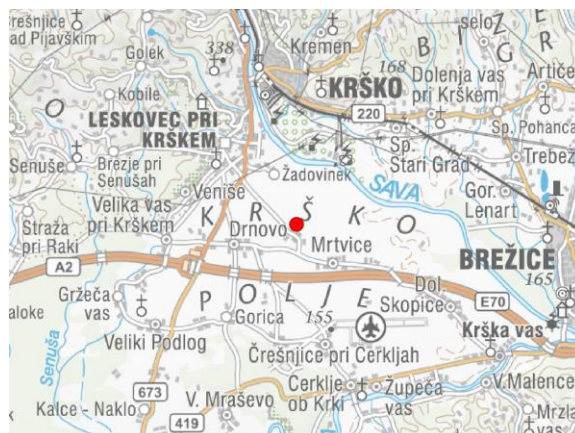
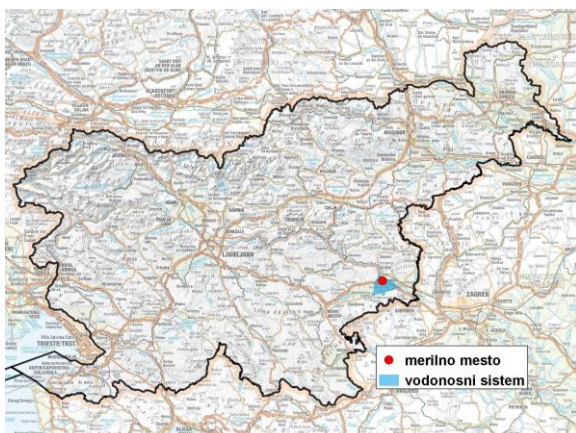


GROUNDWATER MONITORING SITE

Monitoring site code	<b>50045</b>
Monitoring site name	<b>Brege (NE-0577)</b>



**General information about the monitoring site**

<b>Aquifer</b>	Krško polje
<b>Groundwater body code</b>	1003
<b>Groundwater body name</b>	Krška kotlina
<b>Aquifer system</b>	Krško polje
<b>Start of observations</b>	1980
<b>End of observations</b>	-
<b>Surface altitude (m a. s. l.)</b>	153.57
<b>Last altitude of the point 0 (m a. s. l.)</b>	154.12
<b>Last altitude of the bottom (m a. s. l.)</b>	140.48
<b>D48/GK: GKX</b>	539305; 86565
<b>D96/TM: e; n</b>	538935; 87050

**Frequency of the measurements**

<b>Groundwater level</b>	4 per month
<b>Temperature</b>	4 per month
<b>Specific electrical conductivity</b>	-

**Extremes 1981–2017**

<b>Groundwater level – period minimum (m a. s. l.)</b>	145.76
<b>Date of the minimum</b>	02.04.2012
<b>Groundwater level – period maximum (m a. s. l.)</b>	149.77
<b>Date of the maximum</b>	08.04.2013

**Mean values 1981–2017**

	JAN	FEB	MAR	APR	MAY	JUN	JUL	AUG	SEP	OCT	NOV	DEC	PERIOD
m a.s.l.*	147.55	147.53	147.60	147.69	147.60	147.46	147.29	147.10	147.02	147.12	147.31	147.50	147.40
m**	6.57	6.59	6.52	6.43	6.52	6.66	6.83	7.02	7.10	7.00	6.81	6.62	6.72

\* water table in meters above sea level; \*\* depth to water table in meters