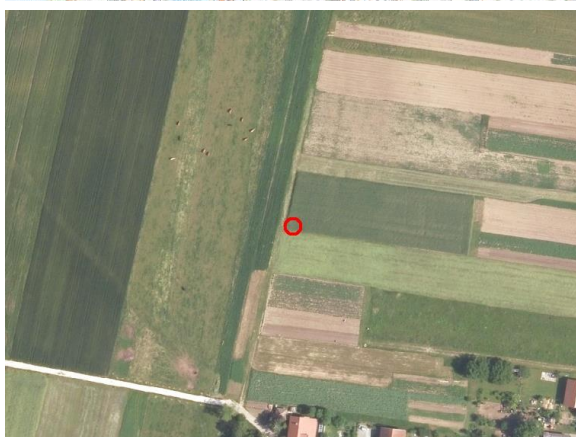
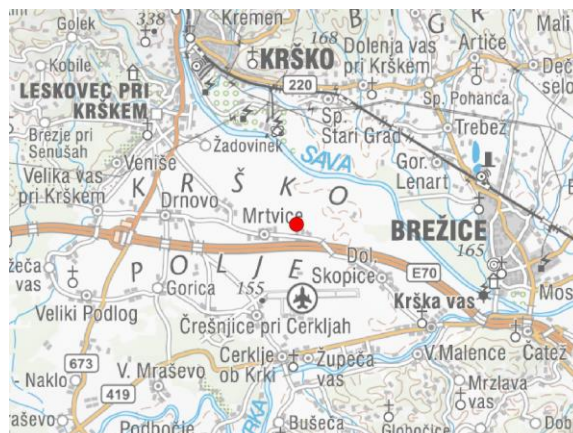
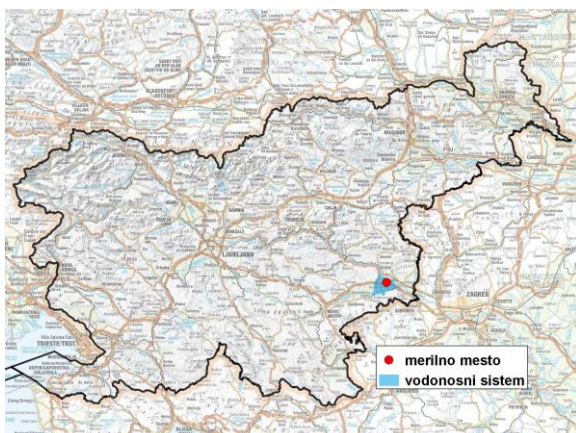


GROUNDWATER MONITORING SITE

Monitoring site code	50052
Monitoring site name	Vihre (Vih - 1/15)



General information about the monitoring site

Aquifer	Krško polje
Groundwater body code	1003
Groundwater body name	Krška kotlina
Aquifer system	Krško polje
Start of observations	2015
End of observations	-
Surface altitude (m a. s. l.)	156.00
Last altitude of the point 0 (m a. s. l.)	156.48
Last altitude of the bottom (m a. s. l.)	139.48
D48/GK: GKY; GKX	541099; 85826
D96/TM: e; n	540729; 86310

Frequency of the measurements

Groundwater level	continuous
Temperature	continuous
Specific electrical conductivity	continuous

Extremes 2015–2017

Groundwater level – period minimum (m a. s. l.)	145.71
Date of the minimum	06.10.2015
Groundwater level – period maximum (m a. s. l.)	147.28
Date of the maximum	10.03.2016

Mean values 2015–2017

	JAN	FEB	MAR	APR	MAY	JUN	JUL	AUG	SEP	OCT	NOV	DEC	PERIOD
m a.s.l.*	146.31	146.53	146.95	146.75	146.61	146.55	146.51	146.54	146.66	146.62	146.81	146.92	146.65
m**	10.17	9.95	9.53	9.73	9.87	9.93	9.97	9.94	9.82	9.86	9.67	9.56	9.83

* water table in meters above sea level; ** depth to water table in meters