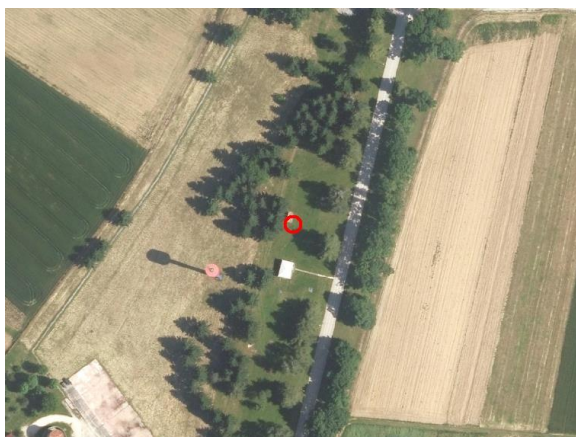
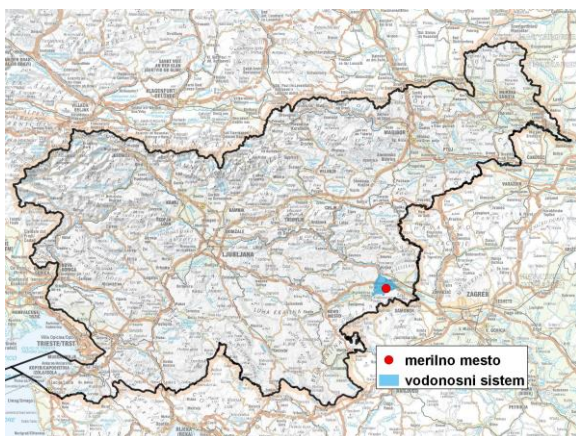


GROUNDWATER MONITORING SITE

Monitoring site code	50061
Monitoring site name	Cerklje (0111)



General information about the monitoring site

Aquifer	Krško polje
Groundwater body code	1003
Groundwater body name	Krška kotlina
Aquifer system	Krško polje
Start of observations	1994
End of observations	-
Surface altitude (m a. s. l.)	153.52
Last altitude of the point 0 (m a. s. l.)	153.98
Last altitude of the bottom (m a. s. l.)	144.68
D48/GK: GKY; GKX	540957; 83093
D96/TM: e; n	540587; 83578

Frequency of the measurements

Groundwater level	continuous
Temperature	1 per month
Specific electrical conductivity	-

Extremes 1995–2017

Groundwater level – period minimum (m a. s. l.)	145.35
Date of the minimum	10.05.2012
Groundwater level – period maximum (m a. s. l.)	148.83
Date of the maximum	09.04.2013

Mean values 1995–2017

	JAN	FEB	MAR	APR	MAY	JUN	JUL	AUG	SEP	OCT	NOV	DEC	PERIOD
m a.s.l.*	146.88	146.87	146.94	146.94	146.85	146.68	146.58	146.40	146.33	146.40	146.62	146.83	146.69
m**	7.10	7.11	7.04	7.04	7.13	7.30	7.40	7.58	7.65	7.58	7.36	7.15	7.29

* water table in meters above sea level; ** depth to water table in meters