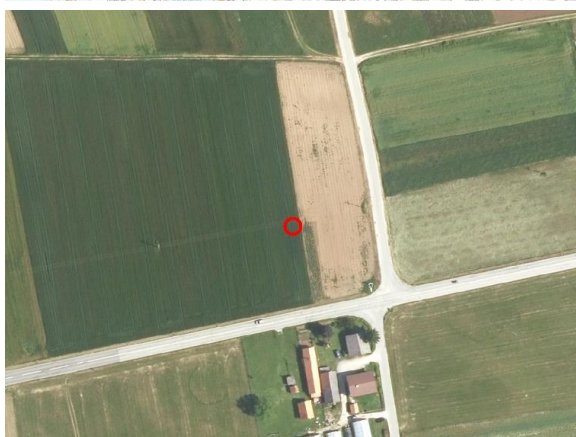
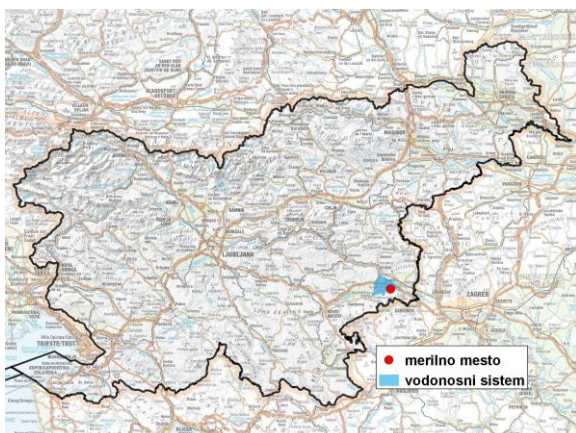


GROUNDWATER MONITORING SITE

Monitoring site code	50085
Monitoring site name	Boršt (NE-0977)



General information about the monitoring site

Aquifer	Krško polje
Groundwater body code	1003
Groundwater body name	Krška kotlina
Aquifer system	Krško polje
Start of observations	1979
End of observations	-
Surface altitude (m a. s. l.)	151.18
Last altitude of the point 0 (m a. s. l.)	151.68
Last altitude of the bottom (m a. s. l.)	139.86
D48/GK: GKX	542937; 82847
D96/TM: e; n	542567; 83331

Frequency of the measurements

Groundwater level	4 per month
Temperature	4 per month
Specific electrical conductivity	-

Extremes 1981–2017

Groundwater level – period minimum (m a. s. l.)	143.94
Date of the minimum	06.04.1982
Groundwater level – period maximum (m a. s. l.)	146.98
Date of the maximum	25.04.1983

Mean values 1981–2017

	JAN	FEB	MAR	APR	MAY	JUN	JUL	AUG	SEP	OCT	NOV	DEC	PERIOD
m a.s.l.*	145.53	145.53	145.58	145.58	145.51	145.43	145.36	145.25	145.23	145.33	145.45	145.58	145.45
m**	6.15	6.15	6.10	6.10	6.17	6.25	6.32	6.43	6.45	6.35	6.23	6.10	6.23

* water table in meters above sea level; ** depth to water table in meters