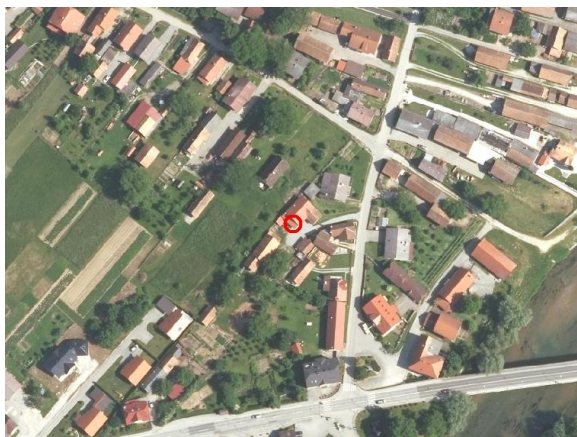
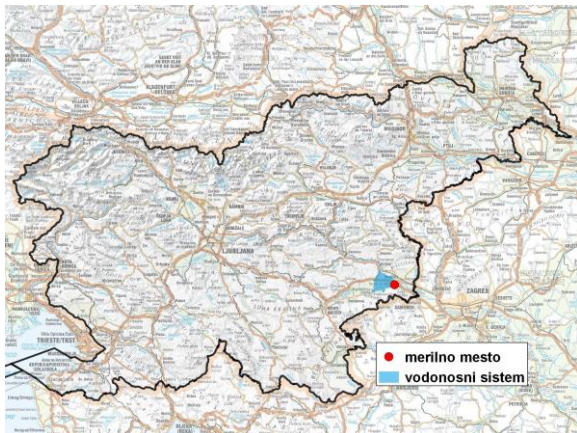


GROUNDWATER MONITORING SITE

Monitoring site code	50090
Monitoring site name	Krška vas (0010)



General information about the monitoring site

Aquifer	Krško polje
Groundwater body code	1003
Groundwater body name	Krška kotlina
Aquifer system	Krško polje
Start of observations	1956
End of observations	2016
Surface altitude (m a. s. l.)	147.66
Last altitude of the point 0 (m a. s. l.)	147.70
Last altitude of the bottom (m a. s. l.)	138.92
D48/GK: GKX	544690; 83244
D96/TM: e; n	544319; 83729

Frequency of the measurements

Groundwater level	continuous
Temperature	continuous
Specific electrical conductivity	-

Extremes 1981–2016

Groundwater level – period minimum (m a. s. l.)	139.16
Date of the minimum	23.04.1981
Groundwater level – period maximum (m a. s. l.)	147.50
Date of the maximum	19.09.2010

Mean values 1981–2016

	JAN	FEB	MAR	APR	MAY	JUN	JUL	AUG	SEP	OCT	NOV	DEC	PERIOD
m a.s.l.*	141.79	141.74	141.76	141.86	141.51	141.26	140.99	140.77	141.03	141.57	141.97	142.00	141.52
m**	5.91	5.96	5.94	5.84	6.19	6.44	6.71	6.93	6.67	6.13	5.73	5.70	6.18

* water table in meters above sea level; ** depth to water table in meters