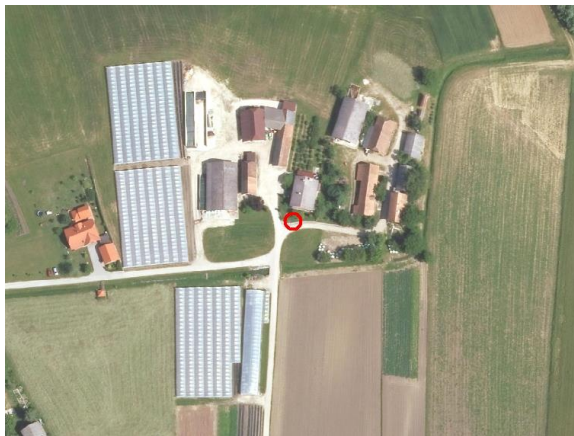
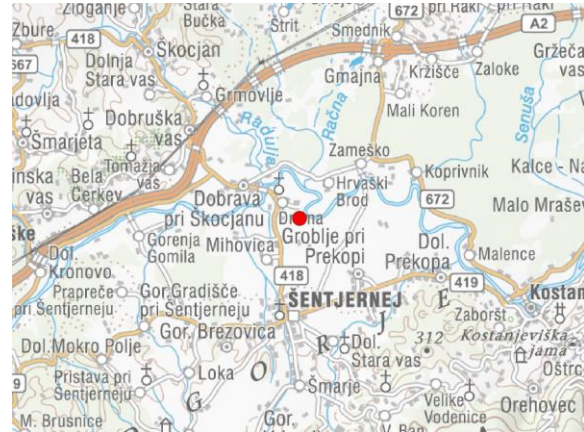
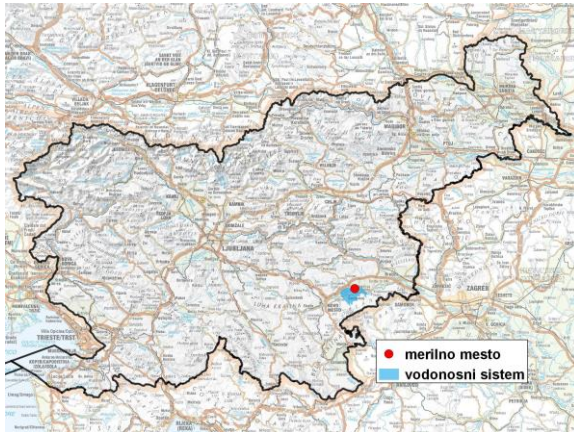


GROUNDWATER MONITORING SITE

Monitoring site code	60030
Monitoring site name	Drama (1030)



General information about the monitoring site

Aquifer	Šentjernejsko polje
Groundwater body code	1011
Groundwater body name	Dolenjski kras
Aquifer system	Šentjernej - Kostanjevica
Start of observations	1956
End of observations	-
Surface altitude (m a. s. l.)	154.45
Last altitude of the point 0 (m a. s. l.)	154.63
Last altitude of the bottom (m a. s. l.)	151.17
D48/GK: GKY; GKX	526982; 80383
D96/TM: e; n	526612; 80868

Frequency of the measurements

Groundwater level	6 per month
Temperature	1 per month
Specific electrical conductivity	-

Extremes 1981–2017

Groundwater level – period minimum (m a. s. l.)	151.23
Date of the minimum	25.08.1993
Groundwater level – period maximum (m a. s. l.)	153.96
Date of the maximum	10.12.2010

Mean values 1981–2017

	JAN	FEB	MAR	APR	MAY	JUN	JUL	AUG	SEP	OCT	NOV	DEC	PERIOD
m a.s.l.*	153.29	153.31	153.30	153.23	153.03	152.94	152.80	152.64	152.85	153.08	153.30	153.32	153.09
m**	1.34	1.32	1.33	1.40	1.60	1.69	1.83	1.99	1.78	1.55	1.33	1.31	1.54

* water table in meters above sea level; ** depth to water table in meters