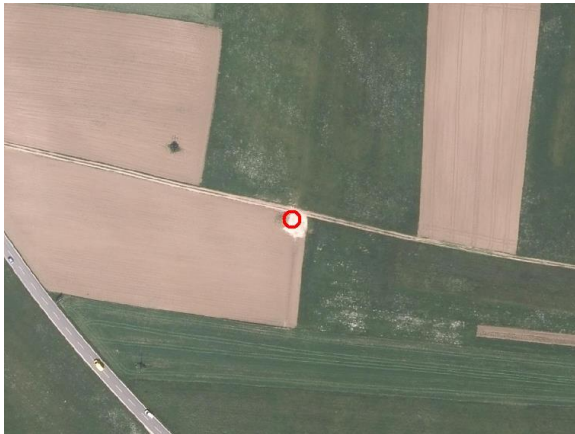
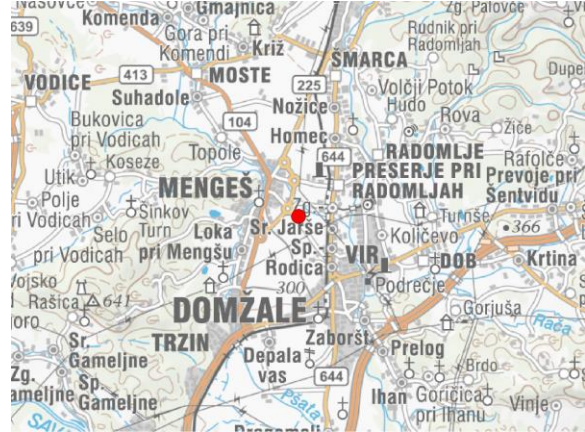
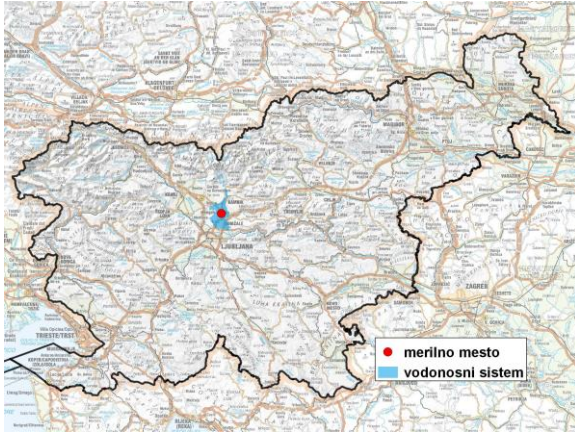


GROUNDWATER MONITORING SITE

Monitoring site code	65036
Monitoring site name	Mengeš (Men - 2/14)



General information about the monitoring site

Aquifer	Dolina Kamniške Bistrice
Groundwater body code	1001
Groundwater body name	Savska kotlina in Ljubljansko Barje
Aquifer system	Prodni zasip Kamniške Bistrice
Start of observations	2015
End of observations	-
Surface altitude (m a. s. l.)	316.15
Last altitude of the point 0 (m a. s. l.)	316.61
Last altitude of the bottom (m a. s. l.)	258.61
D48/GK: GKX	468148; 112954
D96/TM: e; n	467777; 113440

Frequency of the measurements

Groundwater level	continuous
Temperature	continuous
Specific electrical conductivity	continuous

Extremes 2015–2017

Groundwater level – period minimum (m a. s. l.)	295.75
Date of the minimum	05.11.2016
Groundwater level – period maximum (m a. s. l.)	301.06
Date of the maximum	01.01.2015

Mean values 2015–2017

	JAN	FEB	MAR	APR	MAY	JUN	JUL	AUG	SEP	OCT	NOV	DEC	PERIOD
m a.s.l.*	298.02	297.75	298.28	297.96	298.16	298.24	298.18	297.50	297.12	297.20	297.47	298.24	297.84
m**	18.59	18.86	18.33	18.65	18.45	18.37	18.43	19.11	19.49	19.41	19.14	18.37	18.77

* water table in meters above sea level; ** depth to water table in meters