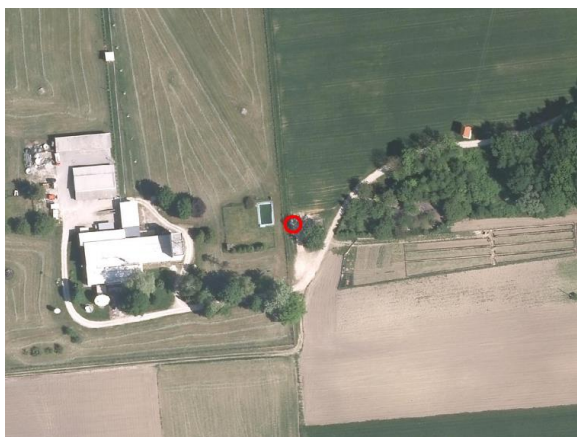
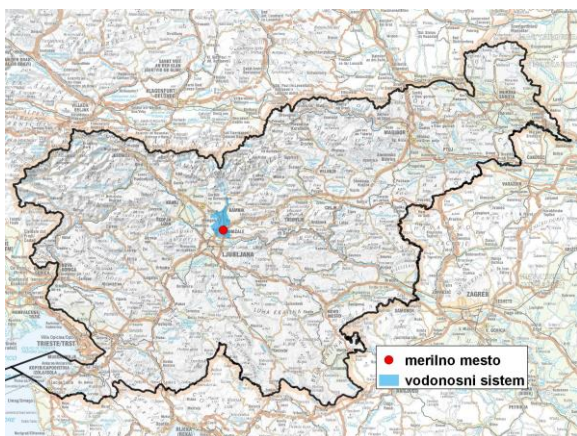


GROUNDWATER MONITORING SITE

Monitoring site code	<b>65053</b>
Monitoring site name	<b>Domžale (Dom - 2/14)</b>



**General information about the monitoring site**

<b>Aquifer</b>	Dolina Kamniške Bistrice
<b>Groundwater body code</b>	1001
<b>Groundwater body name</b>	Savska kotlina in Ljubljansko Barje
<b>Aquifer system</b>	Prodni zasip Kamniške Bistrice
<b>Start of observations</b>	2015
<b>End of observations</b>	-
<b>Surface altitude (m a. s. l.)</b>	291.45
<b>Last altitude of the point 0 (m a. s. l.)</b>	292.04
<b>Last altitude of the bottom (m a. s. l.)</b>	246.04
<b>D48/GK: GKY; GKX</b>	468516; 109136
<b>D96/TM: e; n</b>	468145; 109622

**Frequency of the measurements**

<b>Groundwater level</b>	continuous
<b>Temperature</b>	continuous
<b>Specific electrical conductivity</b>	continuous

**Extremes 2015–2017**

<b>Groundwater level – period minimum (m a. s. l.)</b>	285.79
<b>Date of the minimum</b>	05.11.2016
<b>Groundwater level – period maximum (m a. s. l.)</b>	288.34
<b>Date of the maximum</b>	01.01.2015

**Mean values 2015–2017**

	JAN	FEB	MAR	APR	MAY	JUN	JUL	AUG	SEP	OCT	NOV	DEC	PERIOD
m a.s.l.*	287.08	287.00	287.24	287.04	287.21	287.34	287.23	286.91	286.80	286.86	286.96	287.36	287.09
m**	4.96	5.04	4.80	5.00	4.83	4.70	4.81	5.13	5.24	5.18	5.08	4.68	4.95

\* water table in meters above sea level; \*\* depth to water table in meters