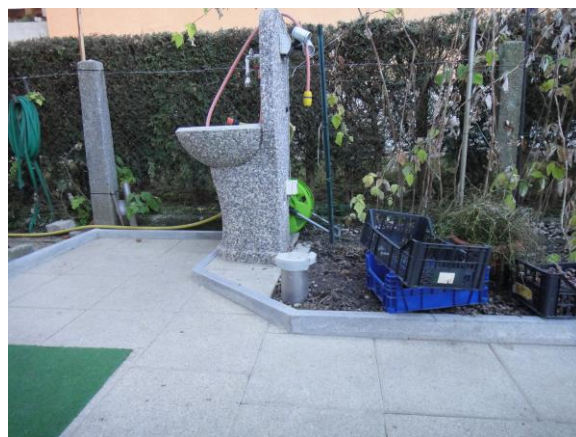
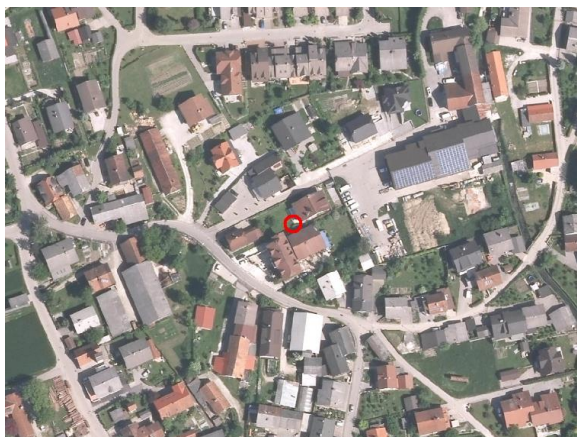
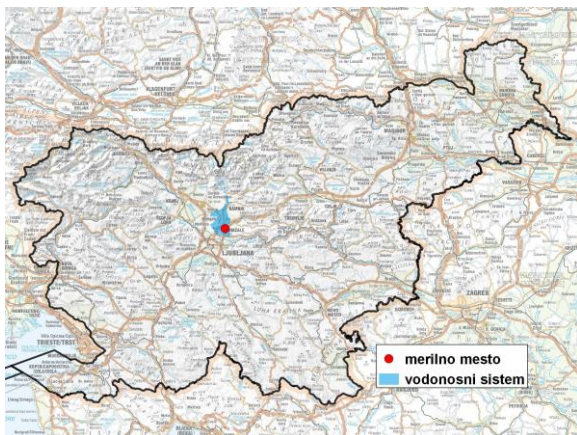


GROUNDWATER MONITORING SITE

Monitoring site code	65055
Monitoring site name	Študa (1752)



General information about the monitoring site

Aquifer	Dolina Kamniške Bistrice
Groundwater body code	1001
Groundwater body name	Savska kotlina in Ljubljansko Barje
Aquifer system	Prodni zasip Kamniške Bistrice
Start of observations	1990
End of observations	2016
Surface altitude (m a. s. l.)	291.96
Last altitude of the point 0 (m a. s. l.)	292.19
Last altitude of the bottom (m a. s. l.)	284.04
D48/GK: GKX	469366; 109133
D96/TM: e; n	468995; 109619

Frequency of the measurements

Groundwater level	continuous
Temperature	1 per month
Specific electrical conductivity	-

Extremes 1990–2016

Groundwater level – period minimum (m a. s. l.)	284.05
Date of the minimum	27.08.2003
Groundwater level – period maximum (m a. s. l.)	289.51
Date of the maximum	04.11.1990

Mean values 1990–2016

	JAN	FEB	MAR	APR	MAY	JUN	JUL	AUG	SEP	OCT	NOV	DEC	PERIOD
m a.s.l.*	286.88	286.66	286.65	286.71	286.64	286.58	286.59	286.34	286.32	286.60	287.05	287.04	286.67
m**	5.31	5.53	5.54	5.48	5.55	5.61	5.60	5.85	5.87	5.59	5.14	5.15	5.52

* water table in meters above sea level; ** depth to water table in meters