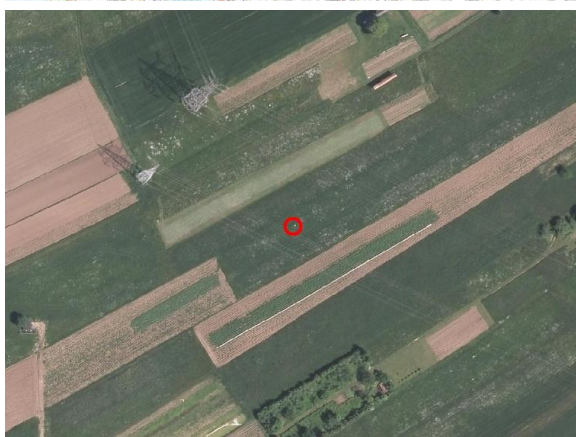
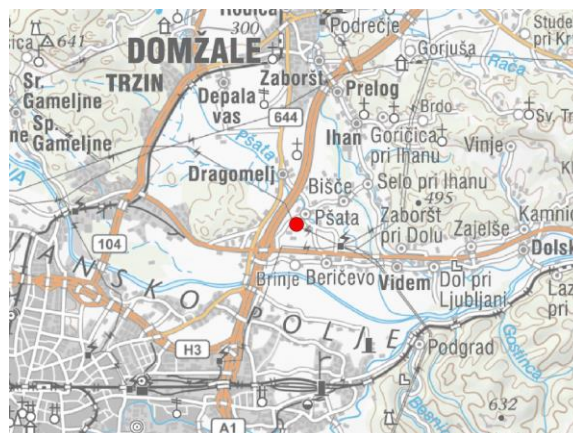
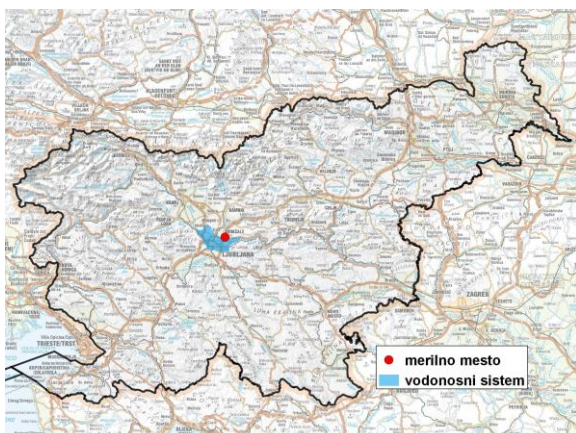


GROUNDWATER MONITORING SITE

Monitoring site code	65065
Monitoring site name	Podgorica (1992)



General information about the monitoring site

Aquifer	Dolina Kamniške Bistrice
Groundwater body code	1001
Groundwater body name	Savska kotlina in Ljubljansko Barje
Aquifer system	Ljubljansko polje
Start of observations	1972
End of observations	-
Surface altitude (m a. s. l.)	283.08
Last altitude of the point 0 (m a. s. l.)	283.80
Last altitude of the bottom (m a. s. l.)	243.50
D48/GK: GKX	469290; 105969
D96/TM: e; n	468919; 106456

Frequency of the measurements

Groundwater level	continuous
Temperature	continuous
Specific electrical conductivity	-

Extremes 1972–2017

Groundwater level – period minimum (m a. s. l.)	272.43
Date of the minimum	29.08.2003
Groundwater level – period maximum (m a. s. l.)	277.45
Date of the maximum	21.09.2010

Mean values 1972–2017

	JAN	FEB	MAR	APR	MAY	JUN	JUL	AUG	SEP	OCT	NOV	DEC	PERIOD
m a.s.l.*	274.39	274.29	274.34	274.47	274.41	274.37	274.31	274.12	274.23	274.53	274.69	274.56	274.39
m**	9.41	9.51	9.46	9.33	9.39	9.43	9.49	9.68	9.57	9.27	9.11	9.24	9.41

* water table in meters above sea level; ** depth to water table in meters