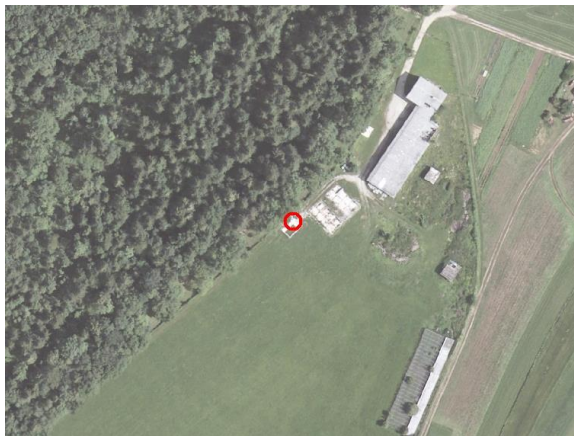
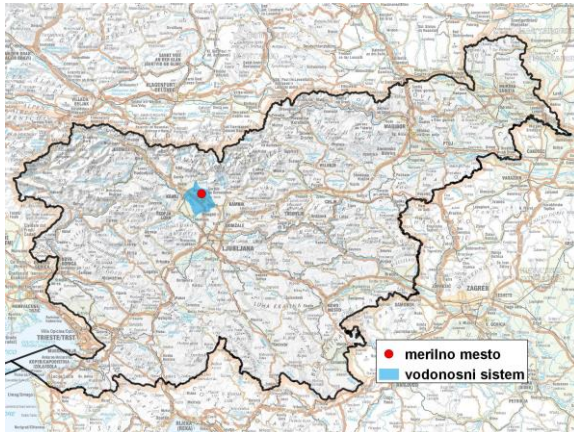


GROUNDWATER MONITORING SITE

Monitoring site code	70017
Monitoring site name	Cerklje (Cer - 2/13)



General information about the monitoring site

Aquifer	Kranjsko polje
Groundwater body code	1001
Groundwater body name	Savska kotlina in Ljubljansko Barje
Aquifer system	Kranjsko polje
Start of observations	2014
End of observations	-
Surface altitude (m a. s. l.)	393.60
Last altitude of the point 0 (m a. s. l.)	394.00
Last altitude of the bottom (m a. s. l.)	320.00
D48/GK: GKX	458885; 122642
D96/TM: e; n	458515; 123129

Frequency of the measurements

Groundwater level	continuous
Temperature	continuous
Specific electrical conductivity	continuous

Extremes 2014–2017

Groundwater level – period minimum (m a. s. l.)	347.39
Date of the minimum	15.09.2017
Groundwater level – period maximum (m a. s. l.)	365.85
Date of the maximum	13.03.2014

Mean values 2014–2017

	JAN	FEB	MAR	APR	MAY	JUN	JUL	AUG	SEP	OCT	NOV	DEC	PERIOD
m a.s.l.*	355.11	354.53	354.39	354.86	354.10	353.00	352.88	352.08	351.74	352.89	354.64	355.78	353.83
m**	38.89	39.47	39.61	39.14	39.90	41.00	41.12	41.92	42.26	41.11	39.36	38.22	40.17

* water table in meters above sea level; ** depth to water table in meters