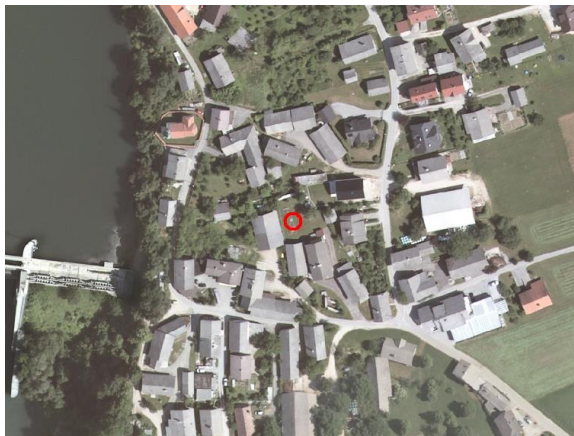
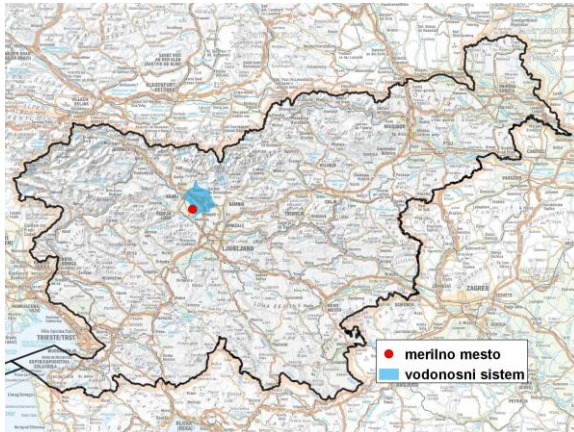


GROUNDWATER MONITORING SITE

Monitoring site code	70045
Monitoring site name	Moše (V-2079)



General information about the monitoring site

Aquifer	Kranjsko polje
Groundwater body code	1001
Groundwater body name	Savska kotlina in Ljubljansko Barje
Aquifer system	Kranjsko polje
Start of observations	1984
End of observations	-
Surface altitude (m a. s. l.)	359.05
Last altitude of the point 0 (m a. s. l.)	359.65
Last altitude of the bottom (m a. s. l.)	297.05
D48/GK: GKX	454875; 115733
D96/TM: e; n	454505; 116219

Frequency of the measurements

Groundwater level	continuous
Temperature	continuous
Specific electrical conductivity	-

Extremes 1984–2017

Groundwater level – period minimum (m a. s. l.)	327.82
Date of the minimum	17.12.1984
Groundwater level – period maximum (m a. s. l.)	339.48
Date of the maximum	20.05.1986

Mean values 1984–2017

	JAN	FEB	MAR	APR	MAY	JUN	JUL	AUG	SEP	OCT	NOV	DEC	PERIOD
m a.s.l.*	333.90	333.77	333.78	333.94	333.95	333.92	333.87	333.82	333.77	333.78	333.93	333.99	333.87
m**	25.75	25.88	25.87	25.71	25.70	25.73	25.78	25.83	25.88	25.87	25.72	25.66	25.78

* water table in meters above sea level; ** depth to water table in meters